

READY TO READ MUSIC

SEQUENTIAL LESSONS IN MUSIC READING READINESS

Jay Althouse

	Lesson	Full Page Reproducible Symbols
Introduction		3
Unit 1 – Staff, Clefs, Notes		5
1. The Staff	6	.76
2. Treble Clef	7	.77
3. Bass Clef	8	.78
4. Notes	9	
5. Whole Note	10	.79
6. Half Note	12	.80
7. Quarter Note	14	.81
8. Eighth Note	16	.82
Unit 2 – Rhythm		19
1. Rests	20	
2. Whole Rest and Half Rest	22	.83, 84
3. Quarter Rest and Eighth Rest	24	.85, 86
4. Barlines and Measures	26	.87, 88
5. Beats	28	
6. Time Signature	30	.89
7. Dots	32	.90, 91
8. Ties	34	.92
Unit 3 – Pitch		37
1. Note Names in the Treble Clef	39	.93
2. Note Names in the Bass Clef	42	.94
3. Ledger Lines	44	.95
4. Grand Staff	46	.96
5. Sharp and Flat	48	.97, 98
6. Key Signatures	51	
7. Naming Key Signatures	54	.99, 100
8. Natural Sign and Accidentals	56	.101
Unit 4 – More Musical Symbols and Terms		59
1. How Loud? How Soft?	60	.102
2. More About Loud and Soft	62	.103
3. How Fast? How Slow?	64	.104
4. Staccato and Fermata	66	.105, 106
5. Accent, Tenuto, and Marcato	68	.107
6. Repeats, First and Second Endings	70	.108, 109
7. Vocal Music	71	
8. Putting It All Together (<i>L'il Liza Jane</i>)	72	
The Symbols of Music		75
Review Answer Key		110
<i>The Water Is Wide</i> , a performance piece		116
<i>Ready to Read Music</i> Certificate		120

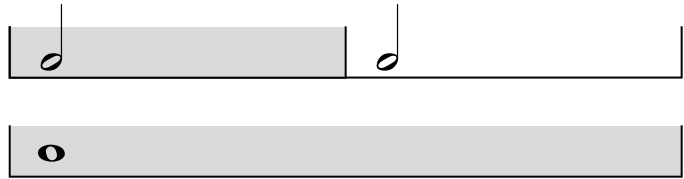


LESSON 6 *Half Note*

A **half note** looks like this:



Two **half notes** equal one **whole note**.
A **half note** lasts half as long as a **whole note**.

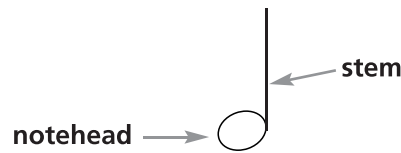


To draw a **half note**, begin by drawing an oval, like a **whole note**. This part of the **note** is called the **notehead**.



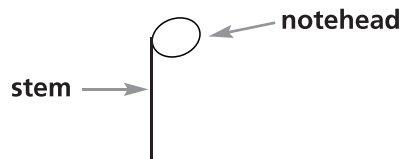
Step 1

Then add a line on the right side of the **notehead**, like this. The line is called a **stem**.



Step 2

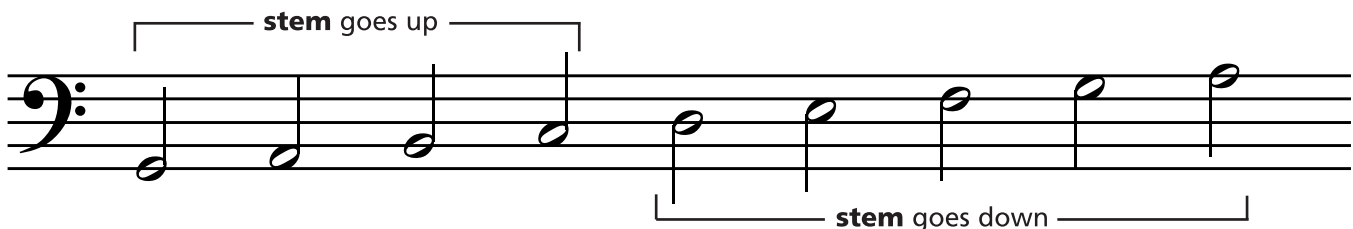
Sometimes the **stem** goes down, like this. If the **stem** goes down, it's on the left side of the **notehead**. If the **stem** goes up, it's on the right side of the **notehead**.



Trace each **half note** shown below. Then draw three more **half notes** to the right of each one you traced.



Half notes look like this on a **staff**:



All **half notes** below the 3rd line have the **stem** going up.
All **half notes** on or above the 3rd line have the **stem** going down.