

Horizons

Phonics and Reading





Rule:

The prefix **re-** usually means **to do again**. Examples: **reread** = to read again; **repack** = to pack again.



Add the prefix **re-** to the base words. Write the new words on the lines.

do _____

read _____

make _____

write _____

load _____

tie _____



Draw lines to match the words with their meanings.

remake

to write again

redo

to load again

rewrite

to tie again

retie

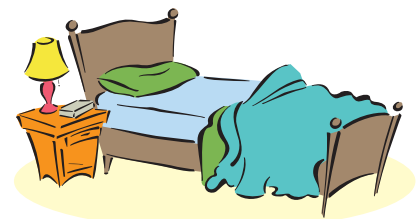
to wind again

reload

to do again

rewind

to make again





Read each sentence. Use the words from the list to complete the sentences.

Word List

remake

redo

rewrite

retie

reload

rewind

1. Jacob had to _____ his bed.

2. Joan needed to _____ her shoes.

3. Please _____ the clock.

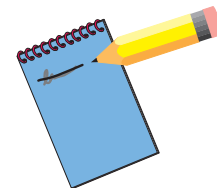
4. I will _____ my letter to my grandma.



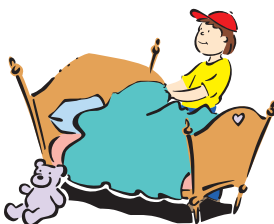
Draw lines to match the words with the pictures.



remake



rewrite



retie



rewind

2 Draw lines to match the pictures to the words.



reread



rewrite



repack



unload

3 Use the words from the list to complete the crossword puzzle.

unwind

unload

untie

unlock

ACROSS:

1. The opposite of load

DOWN:

2. The opposite of tie

3. The opposite of lock

4. The opposite of wind



Writing a Report – Write a report about an animal.

You are going to write a report about an animal. A report tells the reader information about something. Only facts, or things that can be proven to be true, are written in a report. Have your teacher or writing partner help you find information about an animal on which you want to do your report. Pick out at least five facts about the animal. Your teacher or partner can help you write them down. Then decide what order to put them in.

Write your first copy on a piece of paper. Have your teacher or partner help you check for any mistakes, then write your final copy in your book.



3 Read each contraction. What letters are left out? Write the letter or letters that were left out on the line.

I'm

let's

4 Write a sentence for each contraction.

1.

2.





Write a friendly letter.

A friendly letter contains five parts:

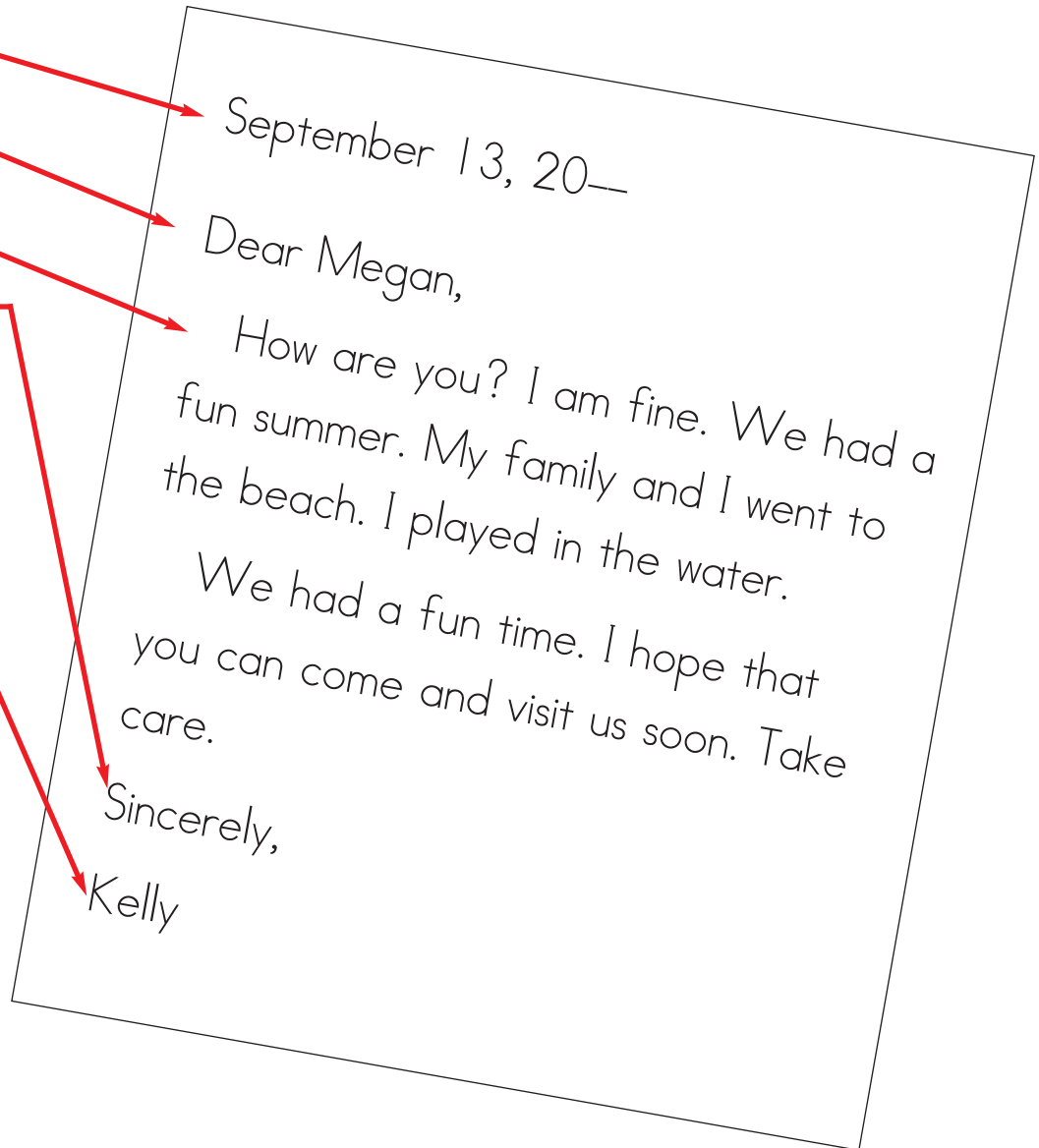
1. Heading

2. Greeting

3. Body

4. Closing

5. Signature



You may write your letter to a friend or relative. Have your teacher or writing partner help you. He or she can also help you correct any mistakes in spelling or punctuation. Write your first copy on a piece of paper. Write your final copy on the following page.