

An immersive cooperative game for 2 to 8 players, ages 12 and up.



A game by Roberto Fraga
and Yohan Lemonnier
Artwork by Ervin and Sabrina
Tobal

■ GAME OVERVIEW

In CAPTAIN SONAR, two teams operate opposing submarines battling for control of the ocean's depths. Each teammate has his own station and responsibilities aboard the vessel. The players will have to coordinate and communicate effectively to survive.

IMPORTANT: There are two different ways to play: real-time mode and turn-by-turn mode. For a first game, or if you are playing in a noisy environment, we suggest you play the turn-by-turn mode. However, the real-time mode will guarantee that you get the stress and adrenaline rush of a real submarine duel!

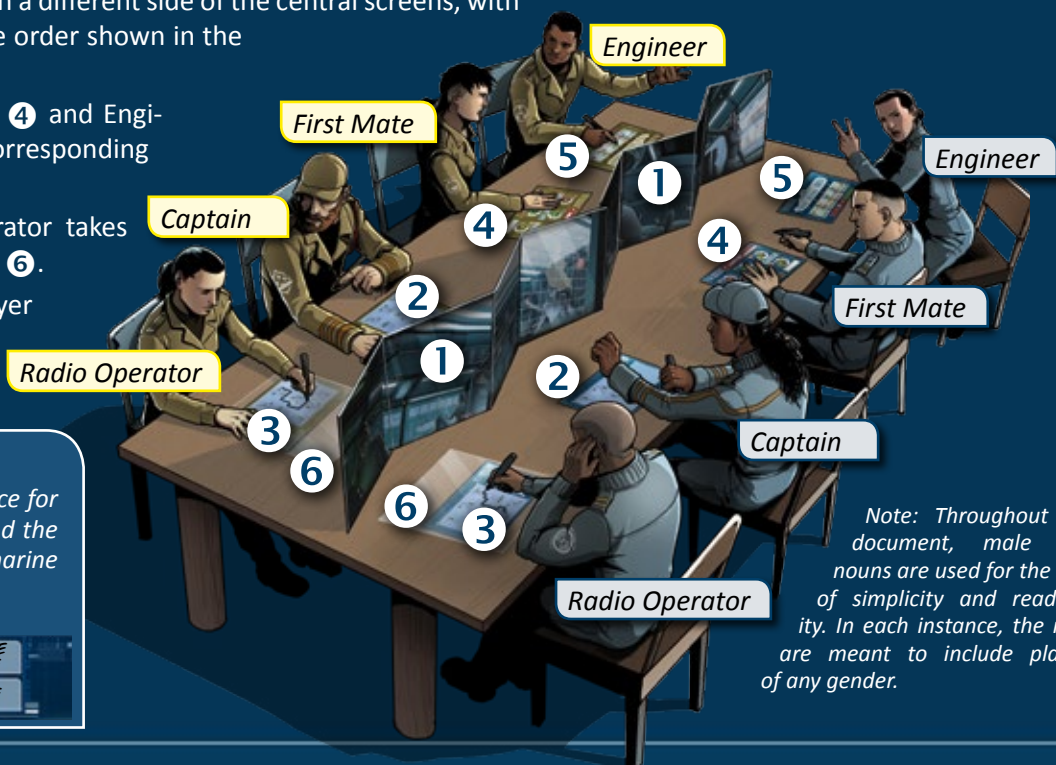
■ WINNING THE GAME

The first team whose submarine suffers 4 damage loses the game. The surviving team wins!

Some advanced scenarios contain additional objectives or replacement objectives that the teams must complete in order to win the game.

■ GAME SETUP

- 1 • Place both screens in the center of the table end-to-end ①.
- 2 • Choose a scenario (see page 8). Each Captain ② and Radio Operator ③ takes the corresponding sheet.
- 3 • When playing in real-time mode, players use the dark side of their sheet. In turn-by-turn mode, players use the light side.
- 4 • Each team sits on a different side of the central screens, with players sitting in the order shown in the diagram.
- 5 • Each First Mate ④ and Engineer ⑤ takes a corresponding sheet.
- 6 • Each Radio Operator takes a transparent sheet ⑥.
- 7 • Finally, each player takes an erasable marker pen.



NOTE

Each sheet has a space for the player's name and the name of the submarine (team name).



Under water, no one can hear you scream!

The year is 2048. A new economic war is raging. Rare earth has become a key element in the construction of advanced new machinery, and a major economic force around the world.

Private companies are arming the latest prototype submarines to dive into the world's depths in search of rare earth. Under the peaceful surface of the sea, a silent war is being fought with new and unstable technology.

You are part of a team of elite officers in command of a state-of-the-art submarine.

To beat the enemy, you must cooperate with your teammates. Only the team who best communicates and works together will survive the encounter...

■ COMPONENTS

- 2 sets of 12 role sheets (1 for each team, yellow and blue)
Each sheet is two-sided: the light side is used for turn-by-turn mode, while the dark side is used for real-time mode.
- For each team:
 - 1 First Mate sheet
 - 1 Engineer sheet
 - 5 Captain sheets (1 for each scenario)
 - 5 Radio Operator sheets (1 for each scenario)
- 2 transparent sheets for the Radio Operators
- 8 erasable marker pens
- 2 screens

■ TEAM LINEUP

- 8 players: 2 teams of 4
- 7 players: 1 team of 4 and 1 team of 3
- 6 players: 2 teams of 3
- 5 players: 1 team of 3 and 1 team of 2
- 4 players: 2 teams of 2
- 3 players: 1 team of 2 and 1 player alone
- 2 players: 2 players alone

In a 2- or 3-player game, players must use turn-by-turn mode, as one player will need more time to manage all four roles by himself.

ROLE ASSIGNMENTS DEPENDING ON THE NUMBER OF PLAYERS

Teams of 4: Each player plays a different role.

Teams of 3: One player plays both the Captain and First Mate roles.

Teams of 2: One player plays the Captain, First Mate, and Engineer roles.

Note: Throughout this document, male pronouns are used for the sake of simplicity and readability. In each instance, the rules are meant to include players of any gender.

THE FOUR DIFFERENT ROLES ABOARD



THE CAPTAIN

The Captain is the leader of the team, responsible for guiding the submarine and for coordinating the team members.

At the beginning of the game, the Captain draws an "X" on the sea space of his choice to determine the starting position of his submarine. This is not shown to the enemy team.

Then both Captains shout "DIVE" to signal the start of the game. Each captain announces the course of his submarine and draws the route on the map on his sheet. In turn-by-turn mode, randomly determine a team to take the first turn.

ANNOUNCING A COURSE

The Captain can move his submarine one space at a time in one of four directions: north, south, east, or west.

He must announce his course loudly and clearly so that all players can hear it. The announcement should be phrased as "HEAD NORTH/SOUTH/EAST/WEST."

REAL-TIME MODE:

Each Captain announces his course at the pace of his choice.

TURN-BY-TURN MODE:

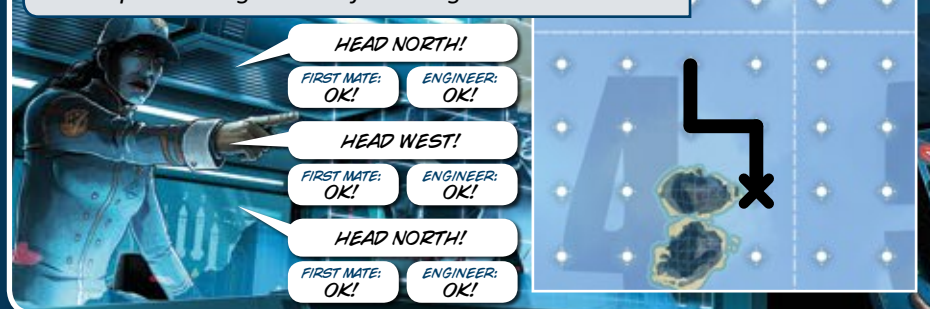
The Captains alternate announcing a course, allowing as much time as necessary for all players to complete their tasks.

IMPORTANT: In both game modes, the Captain must wait for the First Mate and the Engineer to perform their tasks and announce "OK" before announcing a new course (see The First Mate and The Engineer, page 3).

- A submarine cannot cross or move along its own previous route (i.e. move into a space where a line is already drawn).
- A submarine cannot move across an island or into a space with its own mine (see Dropping a Mine, page 6).
- The Captain can erase his route only by surfacing (see Surfacing, page 5).

EXAMPLE

The Captain has given the following orders:



BLACKOUT!

If the Captain cannot announce a course due to islands, mines or the submarine's route, he MUST IMMEDIATELY SURFACE (see page 5).

ADVICE

- The Captain should regularly check with his Radio Operator to get an estimate of the enemy's position.
- The Captain should not announce his courses too quickly, so that his teammates have time to react and perform their tasks.



THE RADIO OPERATOR

The Radio Operator is the eyes and ears of the team. He is responsible for tracking the enemy submarine by listening to the enemy Captain's announcements.

Each time the enemy Captain announces a course, the Radio Operator draws it on his transparent sheet (beginning anywhere, since he does not know the enemy's starting location).

By sliding his transparent sheet around his map, the Radio Operator will be able to estimate the enemy submarine's position, bearing in mind that the enemy cannot cross islands or its own route.

The more the Radio Operator is able to listen to the enemy Captain, the more easily he will be able to determine the enemy's route and position. He will need to regularly update his Captain with information on the possible location of the enemy.

The Radio Operator will be able to narrow the enemy's position down further with the help of drones and sonar, which will be activated by the Captain or the First Mate (see The First Mate, page 3, and Activating Systems, page 6).

EXAMPLE

The Radio Operator knows that the route he has drawn is not possible since it crosses an island. He will need to continue sliding his transparent sheet until he finds a possible position for the enemy's submarine.



ADVICE

- To avoid drawing outside of the transparent sheet, try to start in the middle of the sheet at the beginning of the game.
- If the route goes outside of the transparent sheet, or if you become lost, erase everything and start over.

RD THE SUBMARINE



THE FIRST MATE

The First Mate's job is to advance the gauges to bring the submarine's systems online. He alerts the Captain when the weapon, detection, and special systems are ready to activate.

MANAGING THE GAUGES

Each time the Captain announces a course, the First mate marks an empty space on the gauge of his choice. When all spaces on a gauge are marked, the First Mate announces it loudly and clearly. For example, an announcement of "MINE READY" lets the Captain know that he can drop a mine when he needs it.

When all spaces on a gauge are full, the system must be activated before the spaces can be marked again.

Only the Captain can activate the mine, torpedo, silence, and scenario systems. The drone and sonar systems can be activated by both the Captain and the First Mate (see Activating Systems, page 6).

EXAMPLE

Two of the First Mate's systems are ready: a mine and a torpedo (which he just finished loading by marking the last space on the gauge).

TORPEDO READY!



DAMAGE

At the top of the First Mate's sheet are four damage spaces representing the 4 damage a submarine can sustain.

Each time the submarine suffers damage, the First Mate crosses out the leftmost empty space. If all 4 spaces are crossed out, the submarine is destroyed and its team loses the game.

IMPORTANT:

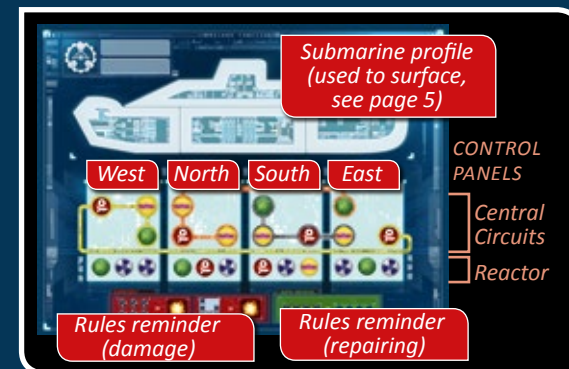
If you play with fewer than 8 players, a Captain might have to play the role of the First Mate as well (and maybe even of the Engineer). If this is the case, each time the Captain gives an order, he immediately marks a space on the gauge of his choice on the First Mate sheet (and a breakdown on the Engineer sheet if he is also playing that role).



THE ENGINEER

The Engineer's job is to track the breakdowns that occur on the submarine as the Captain announces courses. Some breakdowns will neutralize the submarine's systems; others will damage the submarine.

Each time the Captain announces a course, the Engineer crosses out a symbol corresponding to the announced course (north, south, east, or west), signifying a breakdown. He can cross out any symbol in the Central Circuits or in the Reactor, as long as it is in the correct control panel.



EXAMPLE

The Captain announces "HEAD NORTH."

The Engineer must cross out a symbol of his choice in the North control panel. Here, it must be one of two yellow symbols in the Central Circuits or one of three symbols in the Reactor.

HEAD NORTH!



SYSTEM BREAKDOWN

If at least one symbol corresponding to a system is crossed out, that system cannot be activated.

IMPORTANT! Each symbol corresponds to two systems.



MINE + TORPEDO



DRONE + SONAR



SILENCE + SCENARIO

Before activating a system, the First Mate must verify with the Engineer that there are no breakdowns on that system.

EXAMPLE

No system can be activated since at least one symbol corresponding to each system is crossed out.



If the Captain wants to use a Mine or a Torpedo, he must first ask the Engineer to fix the two breakdowns on the red symbols.





RADIATION BREAKDOWNS

Radiation breakdowns have no effect unless ALL radiation symbols are crossed out or they contribute to a complete area breakdown (see Complete Area Breakdown, below).

When all radiation symbols are crossed out, the submarine suffers 1 damage. The Engineer announces "DAMAGE," then erases ALL breakdowns from the submarine.

EXAMPLE

The last radiation symbol has just been crossed out. The Engineer announces it by shouting "DAMAGE."

DAMAGE!

The First Mate crosses out one damage space on his sheet.

Then the Engineer erases all breakdowns from the submarine.

COMPLETE AREA BREAKDOWN

When all symbols in a single control panel have been crossed out (in both the Central Circuits and the Reactor), the submarine suffers 1 damage. The Engineer announces "DAMAGE," then erases ALL breakdowns from the submarine.

EXAMPLE

The Captain has given too many orders to head west and all symbols on the West control panel are crossed out. The Engineer announces it by shouting "DAMAGE."

DAMAGE!

The First Mate crosses out one damage space on his sheet.

Then the Engineer erases all breakdowns from the submarine.

ADVICE

To prevent disaster due to breakdowns, the Engineer should inform the Captain when specific courses could be dangerous to the submarine.

REPAIRING

SELF-REPAIRING IN THE CENTRAL CIRCUITS

Symbols in the Central Circuits are linked in groups of four by an orange, yellow, or gray line called a circuit.

When all four symbols on a circuit are crossed out, they repair themselves; the Engineer erases those breakdowns.

EXAMPLE

Three symbols have been crossed out on the yellow circuit (in the West control panel). If the Engineer can convince the Captain to head east, the yellow circuit can be completed and will self-repair.



Breakdowns in the Central Circuits can also be repaired by surfacing (see page 5).

REPAIRING THE REACTOR

Breakdowns in the Reactor can be repaired in two ways:

- When all radiation symbols have been crossed out, the submarine suffers 1 damage. The Engineer announces "DAMAGE," then erases ALL breakdowns from the submarine.
- The best way to repair the Reactor is by surfacing (see page 5).

EXAMPLE

There are numerous breakdowns in the Reactor. No system can be activated, and four of the six radiation symbols are crossed out. The submarine should surface urgently to repair.



SURFACING

Surfacing is an efficient way to repair the submarine and the only way to reset the route. Doing so will leave the submarine vulnerable for a short time, so surfacing should be undertaken with the utmost caution.

To surface, the Captain raises his fist and announces "SURFACE."

Then the Captain announces the submarine's current sector to the enemy team.

EXAMPLE



The rules for surfacing vary depending on whether the game is being played in turn-by-turn or real-time mode:

TURN-BY-TURN

Instead of announcing a course, the Captain spends his turn announcing that he is surfacing, as described above. Then the Engineer erases ALL breakdowns from the submarine.

The enemy team takes three turns in a row. If the team surfaces during those turns, any remaining turns are lost. Then the game resumes as normal.

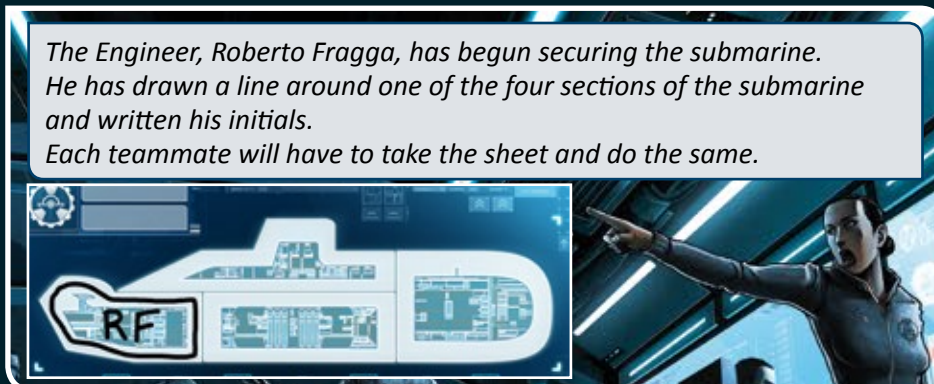
REAL-TIME

As soon as the submarine's sector is announced, repairs can begin:

1 • The Engineer begins securing the ship by drawing a line around one of the four sections of the submarine on his sheet, making sure to stay within the white outline. Then he writes his initials inside that section.

2 • He passes the sheet to a teammate, who does the same with another section of the submarine and continues passing it on until all sections are secured (including all teammates' initials). If there are fewer than four players on a team, some players will need to secure multiple sections.

EXAMPLE



3 • The Engineer takes the sheet and shows it to the enemy Engineer to confirm that no lines were drawn outside the white outline. If this is not the case, the team must start over.

4 • If the enemy Engineer confirms that all lines are drawn correctly, the Engineer erases all lines around submarine sections, all initials, and ALL breakdowns from the submarine.

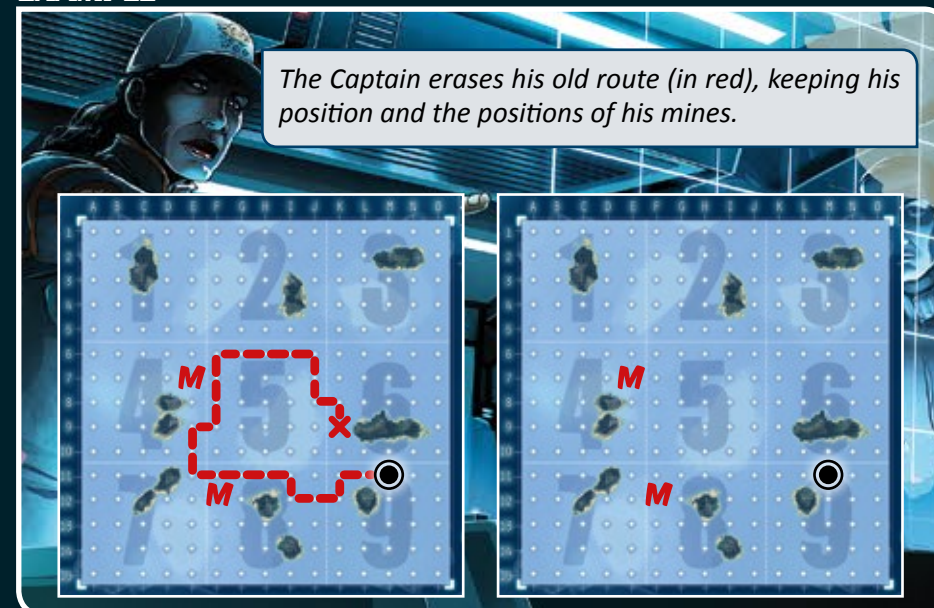
5 • When this is complete, the Engineer announces "READY TO DIVE." Then the Captain announces "DIVE" and play resumes as normal.

IMPORTANT:

While a team is surfaced and repairing, the enemy team continues playing. Teammates on a surfaced submarine can use their marker pens only to secure the submarine.

In the meantime, the Captain resets his route by erasing the route on his sheet, keeping only the submarine's current position and the positions of his mines (see Dropping a Mine, page 6).

EXAMPLE



ADVICE

Once again, communication is the key to success.

• The Engineer **MUST** inform the Captain of breakdowns. The Captain will be able to decide to surface when he thinks he is safe and far from the enemy (though only the Radio Operator can guarantee that!). This will allow for uninterrupted repairs and preparation for a new route.

• Surfacing when the enemy is nearby is risky, and can leave a submarine vulnerable to a killing blow!

• Surfacing can also be used to cleverly lure the enemy into a minefield, which can be activated as soon as the submarine is back under water (see Dropping a Mine, page 6).

ACTIVATING SYSTEMS

When all spaces on a gauge are marked, the First Mate announces it to the Captain. The Captain can then activate that system at any time.

The First Mate can activate only the drone and sonar systems, while the Captain can activate any system.

To activate a system, the Captain or First Mate does the following:

- 1 • Confirm with the Engineer that there are no breakdowns affecting the system. If there are, they must be repaired before the system can be activated.

REMINDER: A system can be activated only if no symbol corresponding to the system has been crossed out.

- 2 • In real-time mode, announce "STOP" and raise a fist. All other players stop what they are doing and listen. In turn-by-turn mode, the Captain or First Mate can activate a system after each of his team's course announcements.
- 3 • Announce a system to activate. For example, "I'M DROPPING A MINE."
- 4 • Resolve the system activation (see below).
- 5 • Play resumes as normal.

A team cannot activate two systems in a row. The Captain MUST announce a course between two systems' activation.



LAUNCHING A TORPEDO

The Captain can launch a torpedo at a space one to four spaces away from his submarine (not diagonally).

The Captain announces the point of impact (for example, "TORPEDO LAUNCHED, IMPACT IN C6"), but does not draw the trajectory on his sheet. Then the First Mate erases all marks on the torpedo gauge.

A torpedo impact has the same outcome as a triggered mine (see Dropping a Mine, to the right). Then play resumes as normal.

If a torpedo impacts in a space with a mine, the mine is destroyed; the Captain erases that mine from his sheet.

IMPORTANT

A torpedo can damage the submarine that launched it!

EXAMPLE



The Captain (in D3) launches a torpedo, which travels four spaces and impacts in G2. The enemy submarine, located in G2, takes a direct hit and suffers 2 damage.



DROPPING A MINE

The Captain draws an M (for "mine") on a space adjacent to his submarine. The Captain cannot drop a mine in a space on his route (with a line drawn in it), and a submarine cannot move into a space with its own mine. The Captain announces "MINE DROPPED" and the First Mate erases all marks on the mine gauge. Then play resumes as normal. The mine has no immediate effect.



TRIGGERING A MINE

The Captain can trigger a mine he previously dropped to damage nearby submarines. At any time, except while surfaced, the Captain can trigger a mine by raising a fist, announcing TRIGGERING A MINE," and stating the mine's location. For example, "TRIGGERING A MINE AT G7."

IMPORTANT

The Captain can trigger a mine whether or not any spaces on the mine gauge are marked, and the First Mate does not erase any marks when a mine is triggered. The mine gauge matters only when dropping a mine, not triggering one.

There are three possible outcomes of a triggered mine or torpedo impact:

- 1 • The enemy submarine is more than one space away from the mine or torpedo impact:

The enemy Captain announces "ALL CLEAR" and play resumes as normal.

- 2 • The enemy submarine is located in a space adjacent to the mine or torpedo impact:

The enemy Captain announces "INDIRECT HIT, ONE DAMAGE."

His First Mate crosses out the leftmost empty damage space on his sheet, then play resumes as normal.

- 3 • The enemy submarine is located on the same space as the mine or torpedo impact:

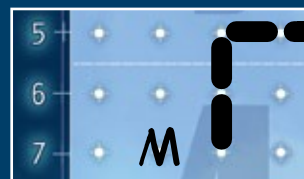
The enemy Captain announces "DIRECT HIT, TWO DAMAGE."

His First Mate crosses out the two leftmost empty damage spaces on his sheet, then play resumes as normal.

IMPORTANT

A mine can damage the submarine that dropped it!

EXAMPLE



From C7, the Captain drops a mine in B7, an adjacent space.



Later in the game, the Captain triggers the mine in B7. The enemy submarine, located one space away from the mine (C6), takes an indirect hit and suffers 1 damage.



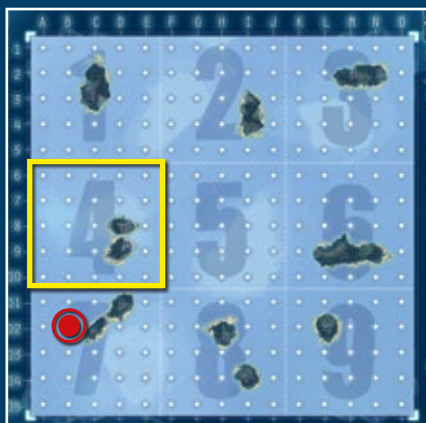


LAUNCHING A DRONE

Drones allow a team to narrow down the sectors in which the enemy's submarine could be located (the map is divided into nine sectors in real-time mode and four sectors in turn-by-turn mode). When a teammate launches a drone:

- The teammate asks the enemy Captain if the enemy submarine is located in a particular sector. For example, "ARE YOU IN SECTOR 5?"
- The enemy Captain answers "YES" or "NO" truthfully. The First Mate erases all marks on the drone gauge, then play resumes as normal.

EXAMPLE



The Captain launches a drone and asks if the enemy submarine is located in sector 4. The submarine is in sector 7, so the enemy Captain answers "NO."



ACTIVATING SONAR

When a teammate activates sonar, he announces "ACTIVATING SONAR." The enemy Captain announces two pieces of information about his submarine's location. This can include the row, column, or sector in which the submarine is located.

- One piece of information must be true, the other must be false.
- Each piece of information must be of a different type (row, column, or sector). Then the First Mate erases all marks on the sonar gauge and play resumes as normal.

EXAMPLE



The Captain activates sonar. Unknown to him, the enemy submarine is in L14, in sector 9.

The enemy Captain announces "WE ARE IN ROW L, SECTOR 6." The first piece of information is true, the second is false.

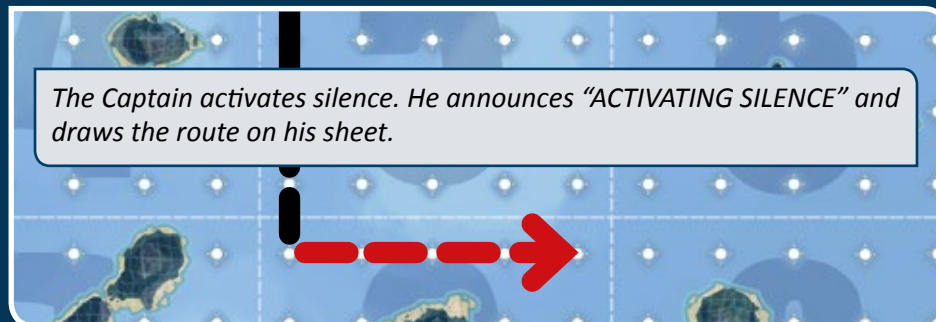


ACTIVATING SILENCE

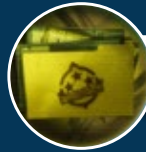
When the Captain activates silence, he announces "ACTIVATING SILENCE" and moves his submarine without announcing the route.

- He can move the submarine up to four spaces in a straight line without crossing an island or his own route.
- The Captain indicates to his team the direction they are moving by gesturing with his hand behind the screen. The First Mate marks an empty space on a gauge of his choice and the Engineer crosses out a symbol on his sheet corresponding to the indicated direction. The First Mate erases all marks on the silence gauge, then play resumes as normal.

EXAMPLE



The Captain activates silence. He announces "ACTIVATING SILENCE" and draws the route on his sheet.



ACTIVATING THE SCENARIO SYSTEM

This system is not used in every scenario. It's function is determined by the scenario, which also indicates whether the gauge is considered to have four or six spaces.

END OF THE GAME

WHEN ONE SUBMARINE HAS SUFFERED 4 DAMAGE, IT IS DESTROYED AND THE GAME ENDS.

THE SURVIVING TEAM WINS THE GAME!

GENERAL ADVICE

- The key to winning is good communication. If no one talks or no one listens, all hope is lost.
- A good Radio Operator makes a big difference. Finding and tracking the enemy submarine is vital.

SCENARIOS

FOR YOUR FIRST GAMES OF CAPTAIN SONAR, WE RECOMMEND PLAYING USING TURN-BY-TURN MODE AT LEAST ONCE AND PLAYING THESE SCENARIOS IN ALPHABETICAL ORDER:

■ ALPHA MAP

Welcome officers. The time has come to put all that you learned at the academy to good use.

The area's islands are small and numerous. Maneuvering around them may prove difficult.

The islands will make the Radio Operator's job easier, but they will also make it easier to run into the enemy submarine. Good luck.



■ BRAVO MAP

Welcome to the mining zone of the Eriatrides Trench.

Your goal is to eliminate the enemy's submarine and clear the way for the deep digging team.

The Radio Operator will have a harder time tracking the enemy in the more open environment.

Drones and sonar will be particularly helpful in narrowing down the enemy's position.



■ CHARLIE MAP

The open sea!

After weeks of fierce combat and tremendous damage sustained on both sides, only two submarines remain operational. Eliminate the enemy to open the Road to the Great North, a submarine route that will lead you to oceanic plains trapped deep beneath the northern ice.

This battle should be fought only by experienced teams. The small islands and open water will put the Radio Operator to the test. Effective use of mines will be invaluable, and well-timed use of stealth could mean the difference between survival and defeat.



■ DELTA MAP

Welcome to the Great North. You have navigated the Road, and your next battle will be fought below fifteen feet of solid ice.

In addition to managing your submarine's systems, you will need perfect coordination when it comes time to surface.



SPECIAL RULES:

If a submarine surfaces in a space other than an open water hole, it immediately suffers 1 damage before resolving the effect of surfacing (see Surfacing, page 5).

■ ECHO MAP

Near the Deep-sea Trench of Scylla, Quantis Corp. and Archer Inc. once fought a bitter battle for control of Archer's weapon depots.

Amidst the wreckage of the undersea battlefield, some of Archer's explosive ordnance remains active.

Your patrons have equipped you with a system designed to hack into Archer's weapon software. Once activated, it will allow you to bypass Archer's security protocols and take control of the remaining mines.



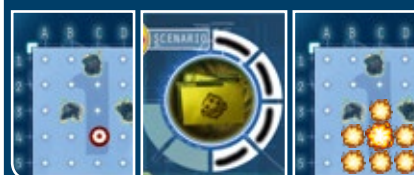
SPECIAL RULES:

When all four spaces on the scenario system gauge are marked, the scenario system can be used to trigger an Archer mine. To do so, the Captain announces "TRIGGERING ARCHER MINE" and states the mine's location.

A triggered Archer mine has the same outcome as a torpedo impact.

After an Archer mine is triggered, the First Mate erases all marks on the scenario system gauge and both Captains cross out the mine on their sheets. A crossed out mine cannot be triggered.

EXAMPLE



When all four spaces on the scenario system gauge are marked, the Captain can trigger an Archer mine at any time by announcing "TRIGGERING ARCHER MINE AT C4."