



It is highly recommended that you visit www.metal-earth.com/360/icx115 to see the completed model before assembling your own

ICX115 Red Dragon



TO CREATE THE BEST CONNECTIONS



Legends:

- E** Engraved/Color side
- NE** Non-engraved/Silver side
- Attention point
- Insert tab and bend 90 degrees
- Insert tab and twist 90 degrees

Assembly tip:

If needed, slightly twist tabs to hold parts together then untwist and bend them down for a nice finish

Recommended tools:

-Wire cutters: helpful for taking parts from the metal sheets.

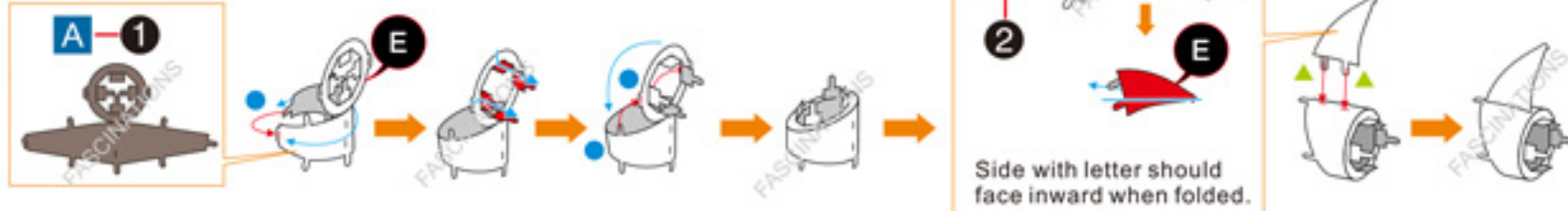


-Tweezers or needle nose pliers: helpful for folding parts, bending and twisting tabs.



ASSEMBLY STEPS

Step 1



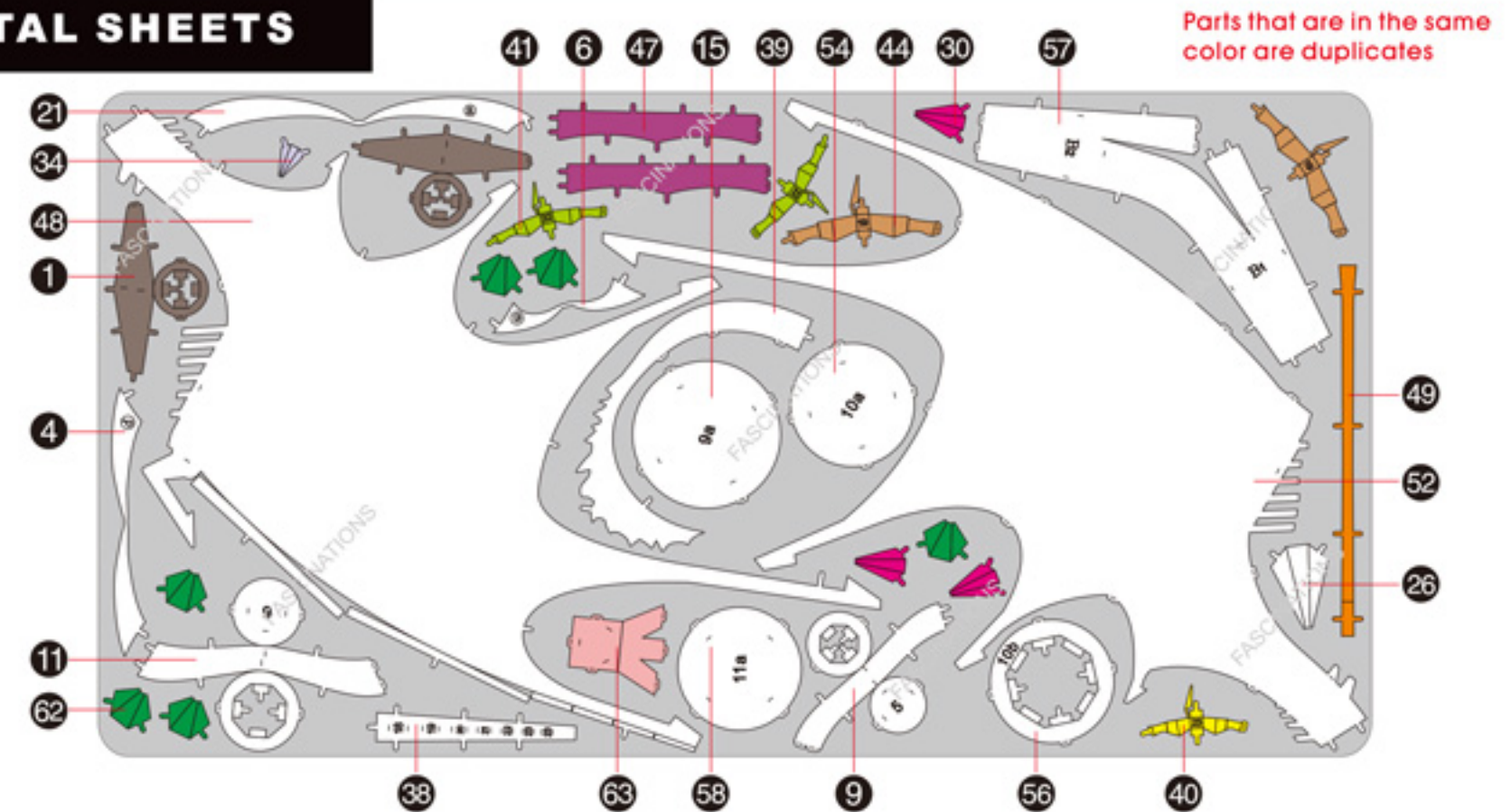
Step 2



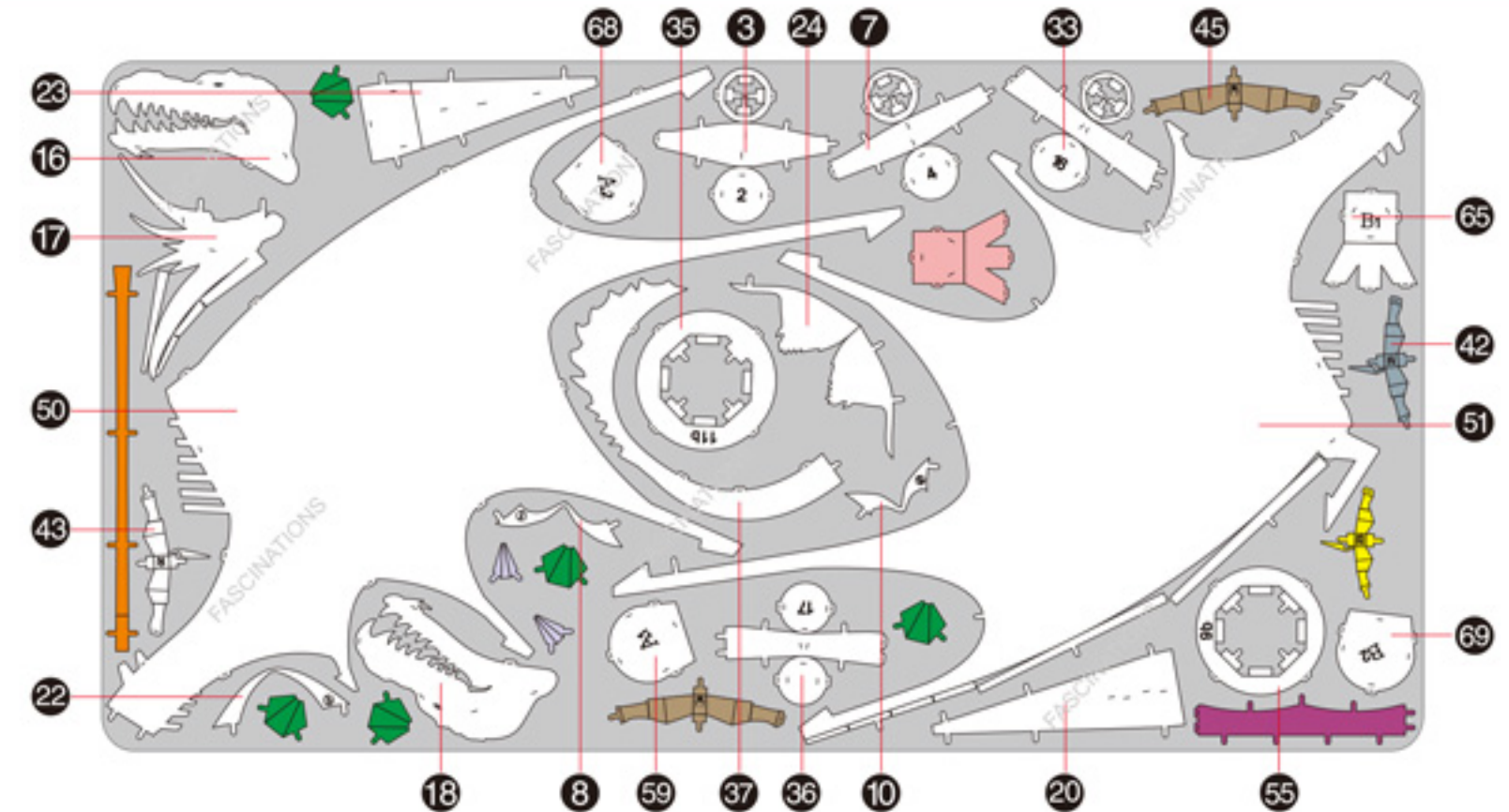
In order to avoid possible injury from sharp edges, please carefully discard the metal sheets after parts have been removed.

METAL SHEETS

A



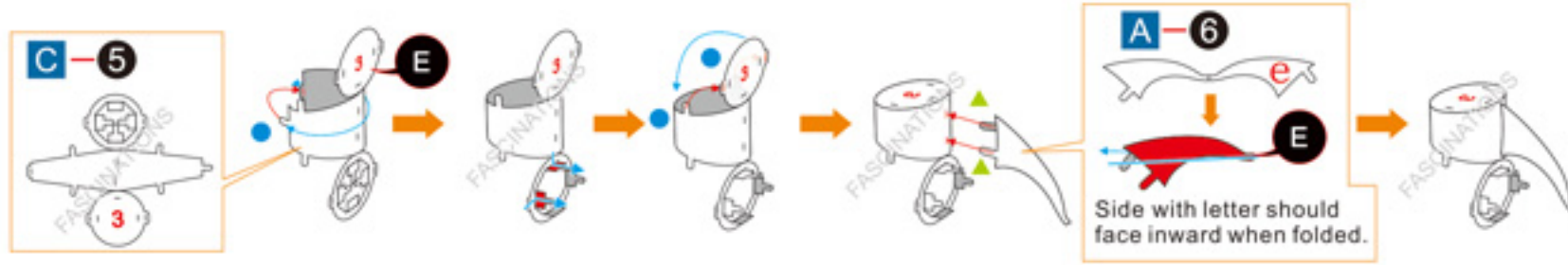
B



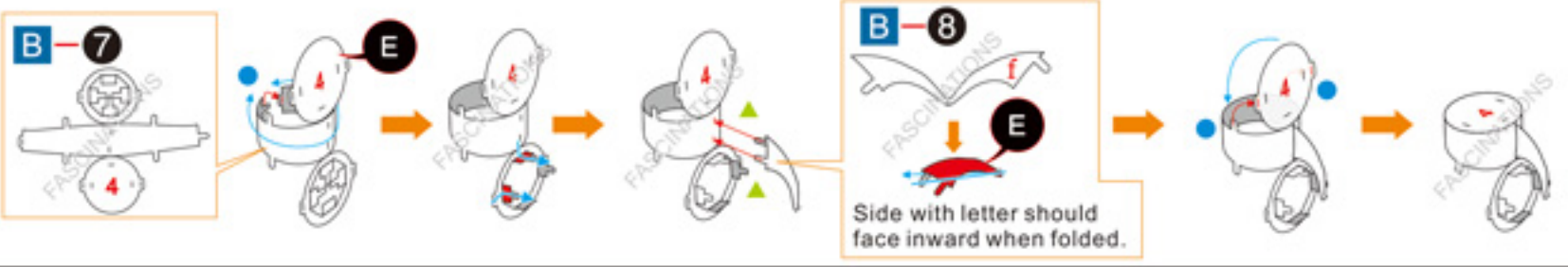
C



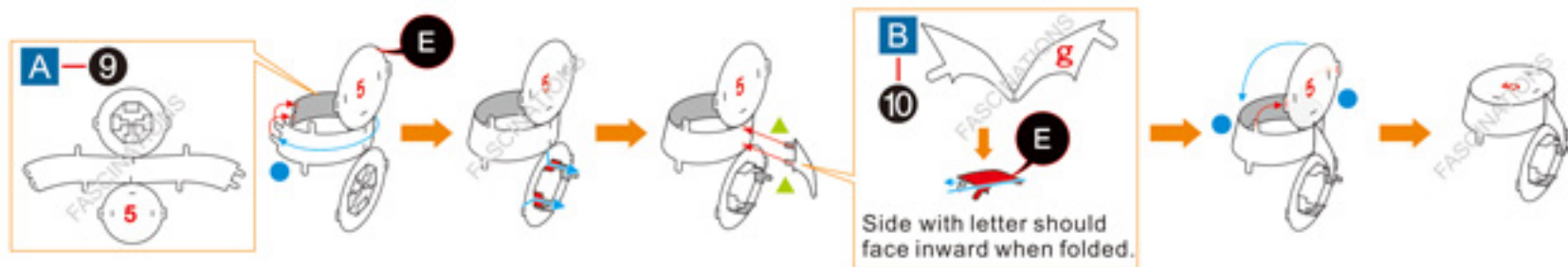
Step 3



Step 4



Step 5



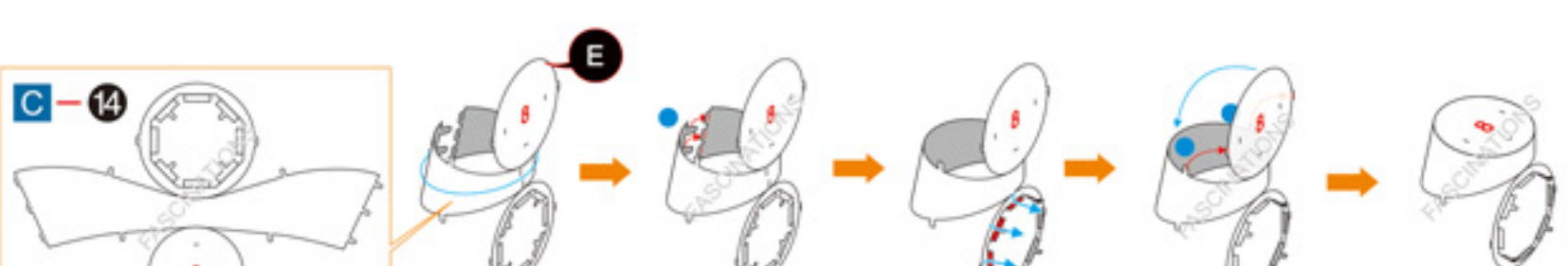
Step 6



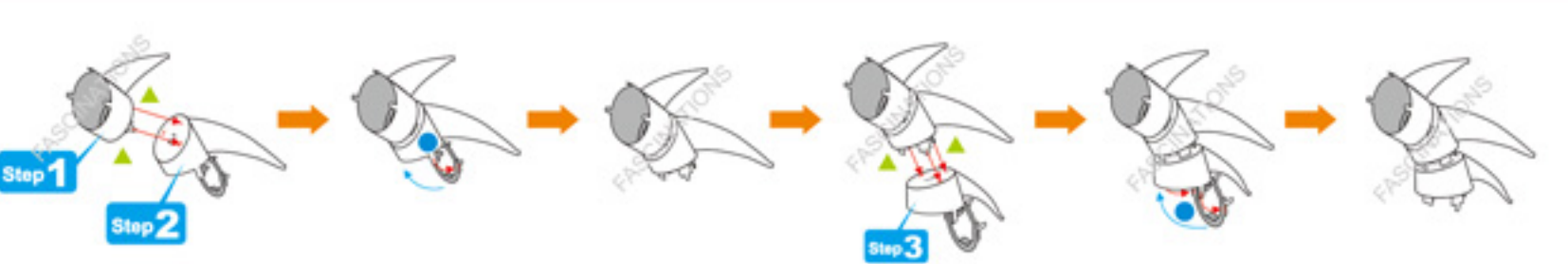
Step 7



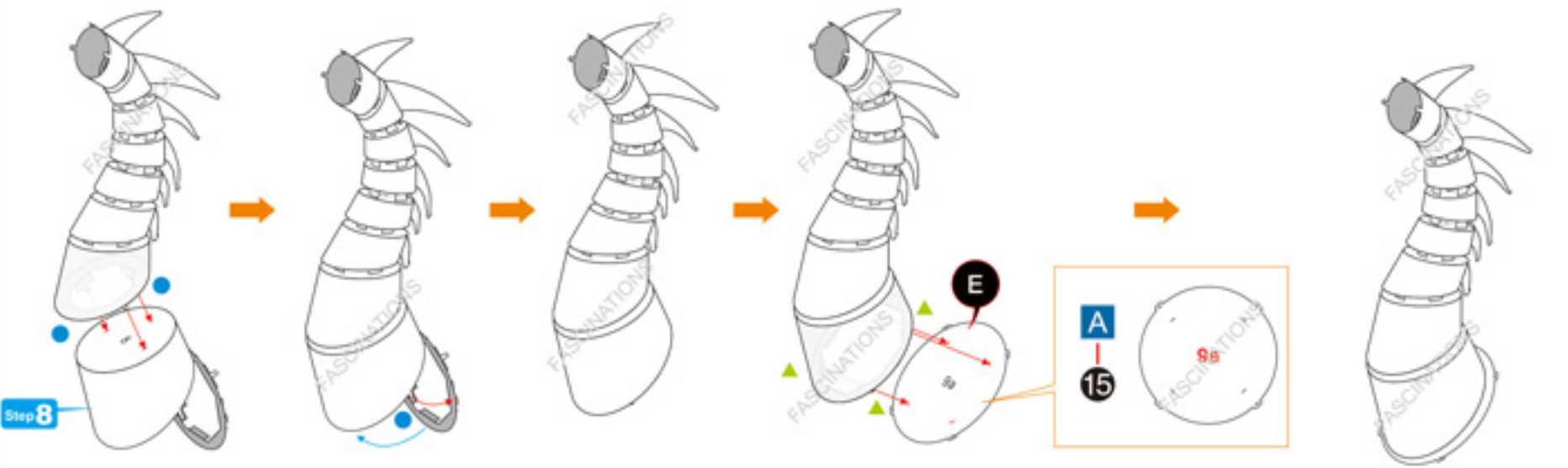
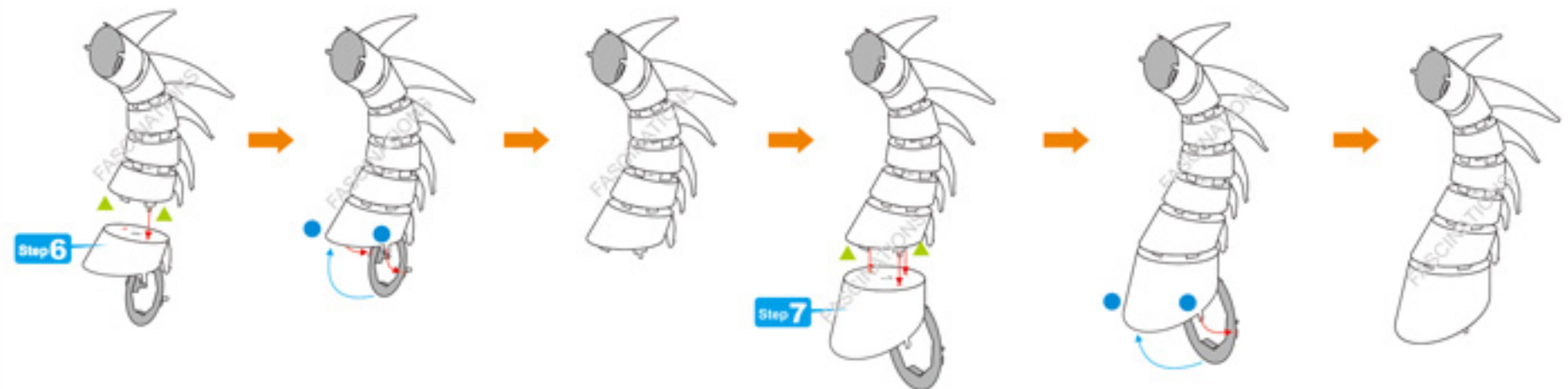
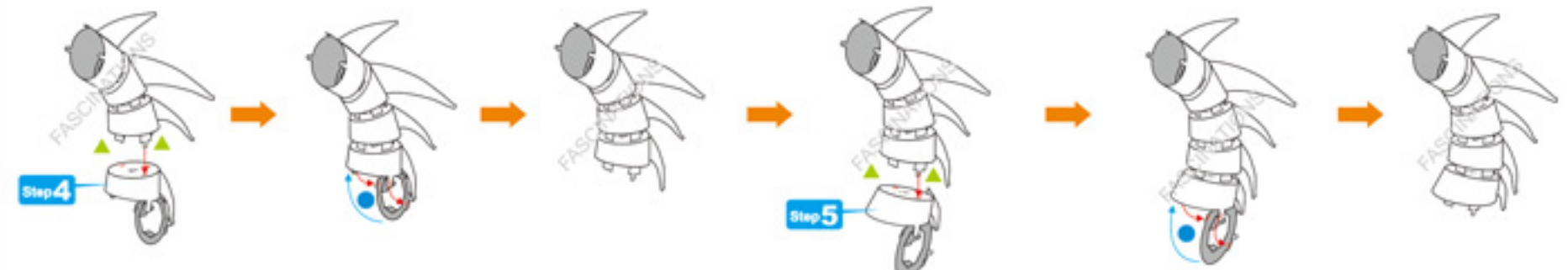
Step 8



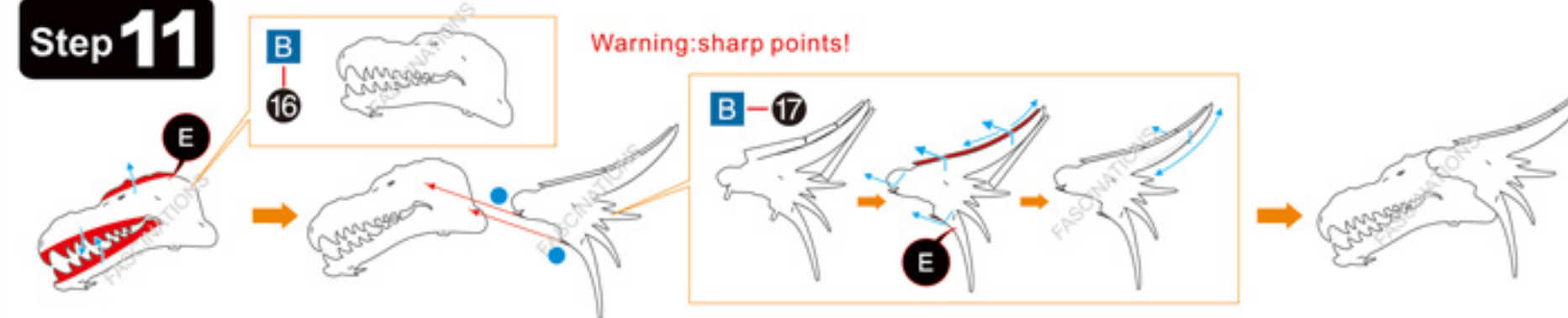
Step 9



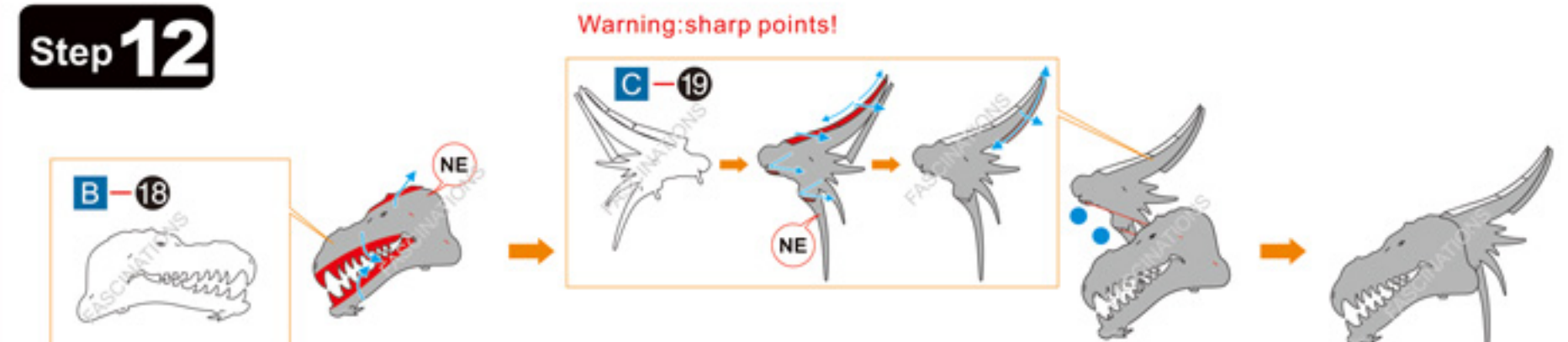
Step 10



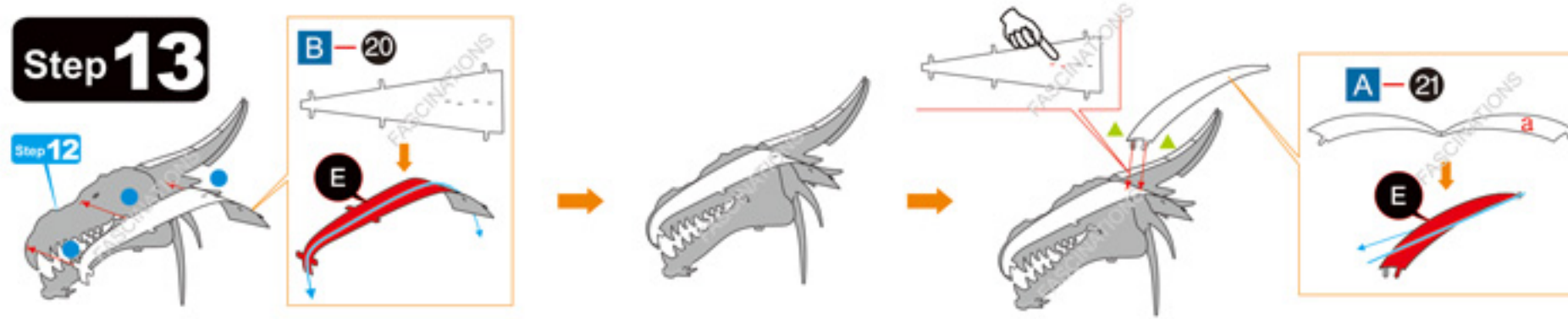
Step 11



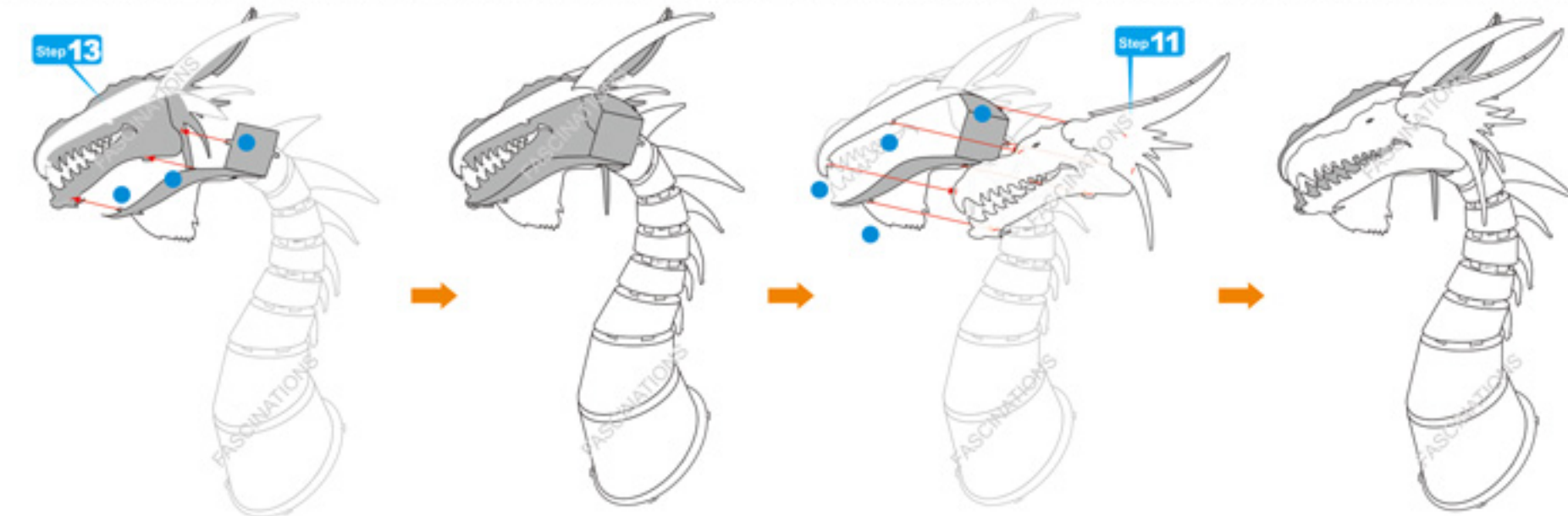
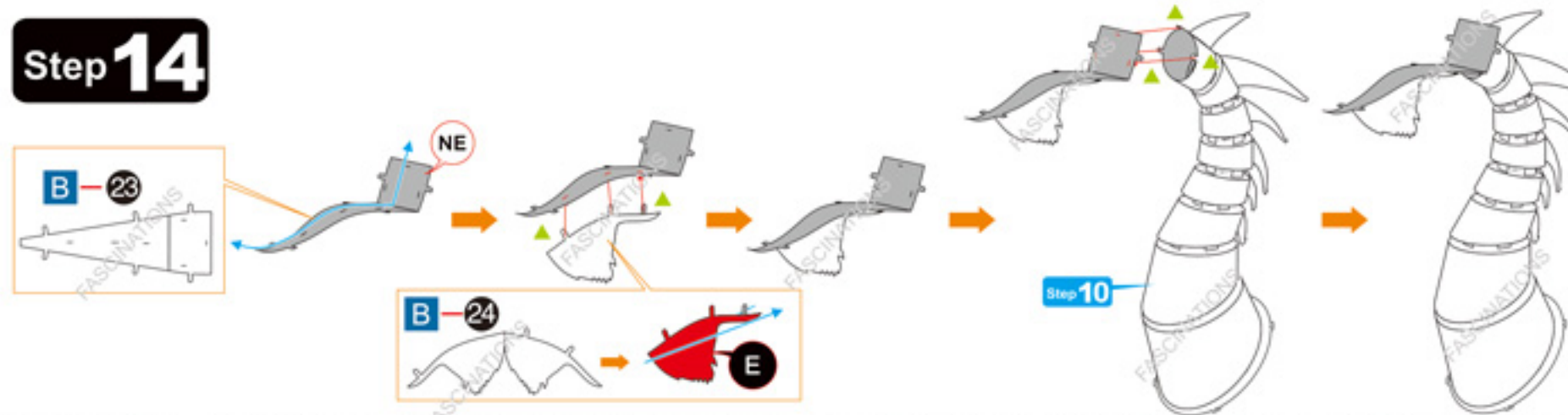
Step 12



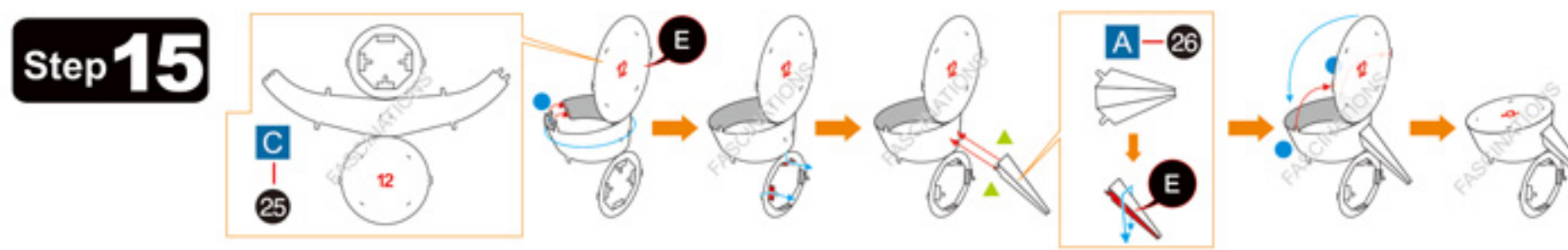
Step 13



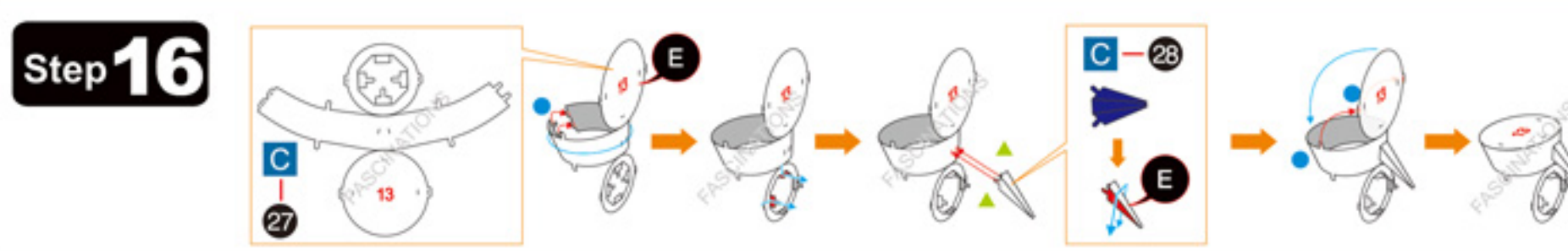
Step 14



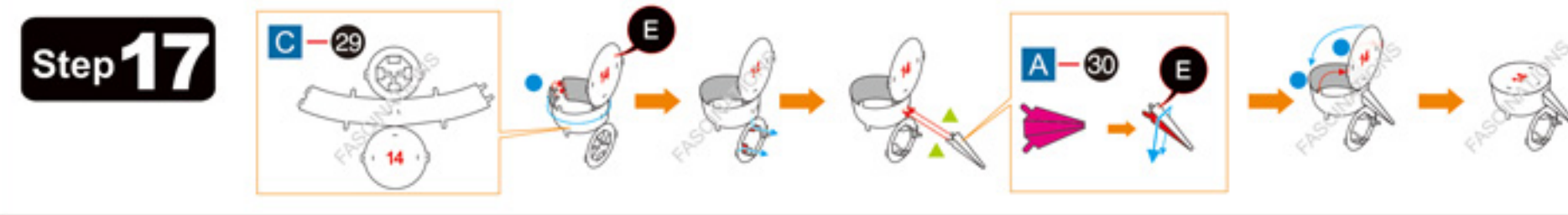
Step 15



Step 16



Step 17



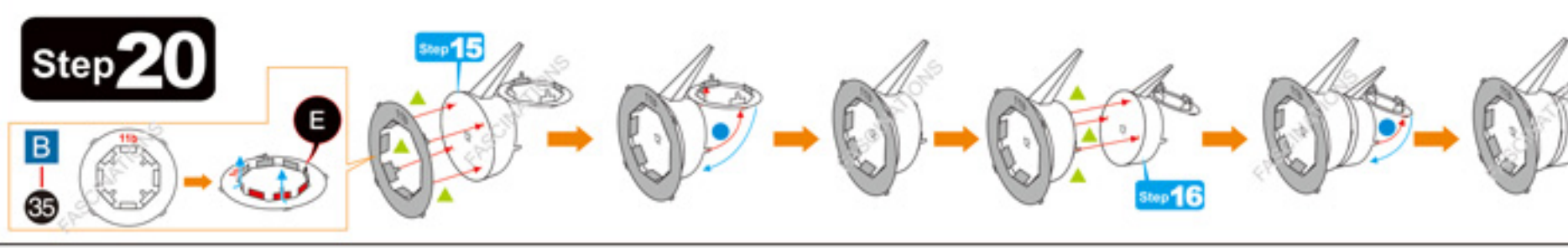
Step 18



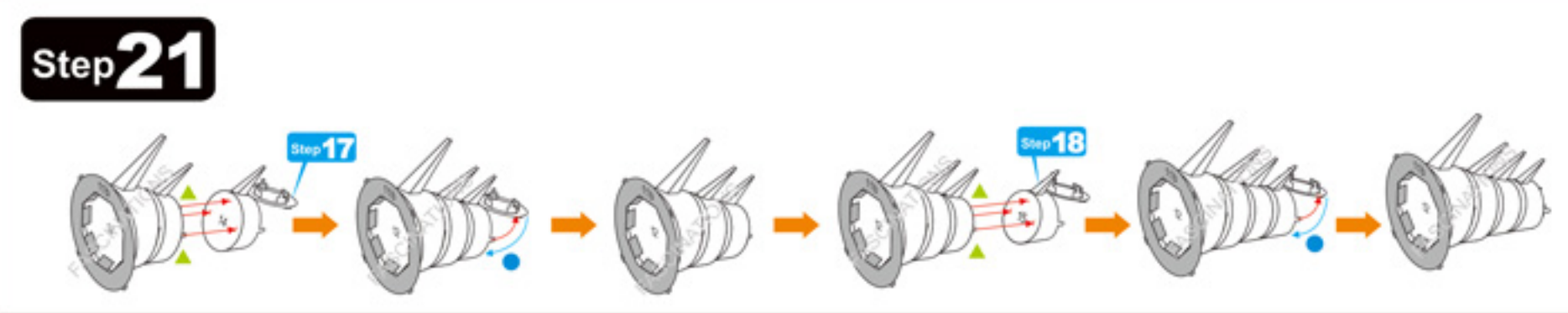
Step 19



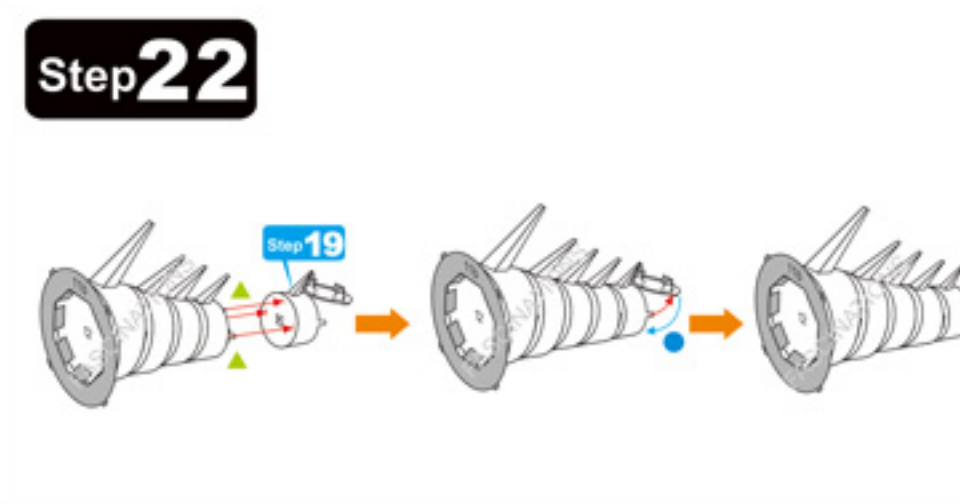
Step 20



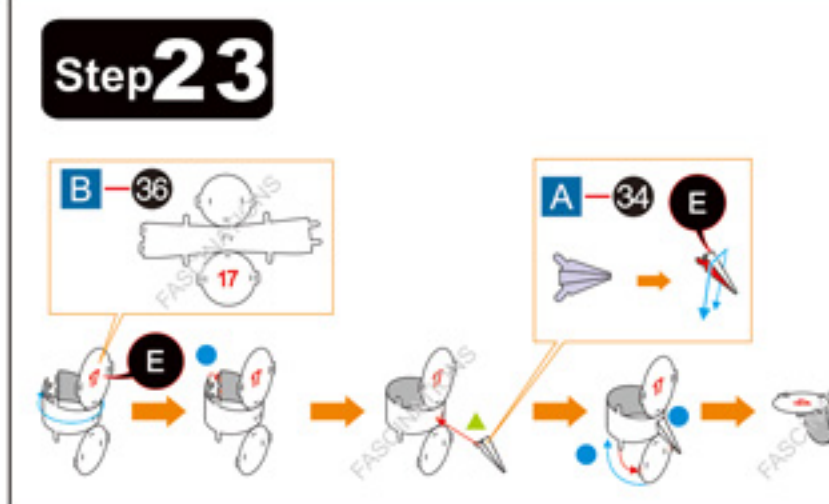
Step 21



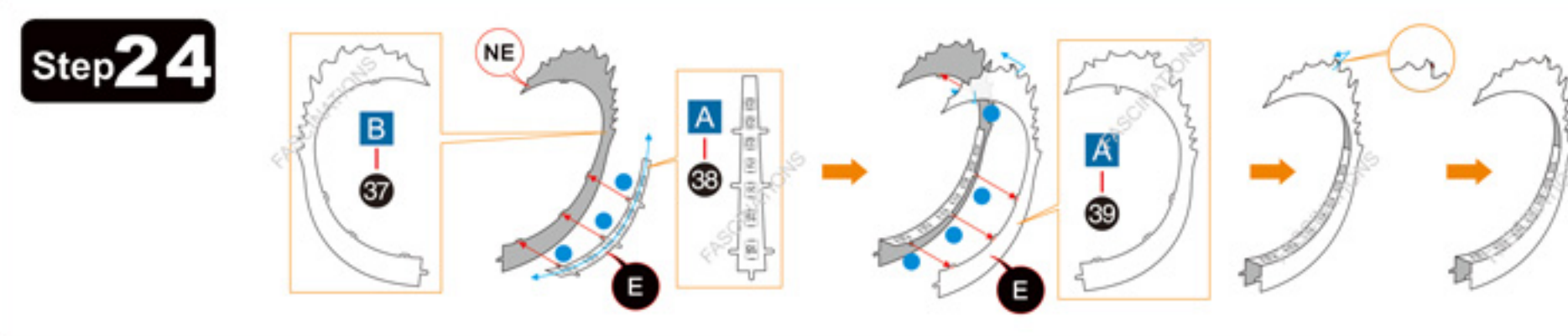
Step 22



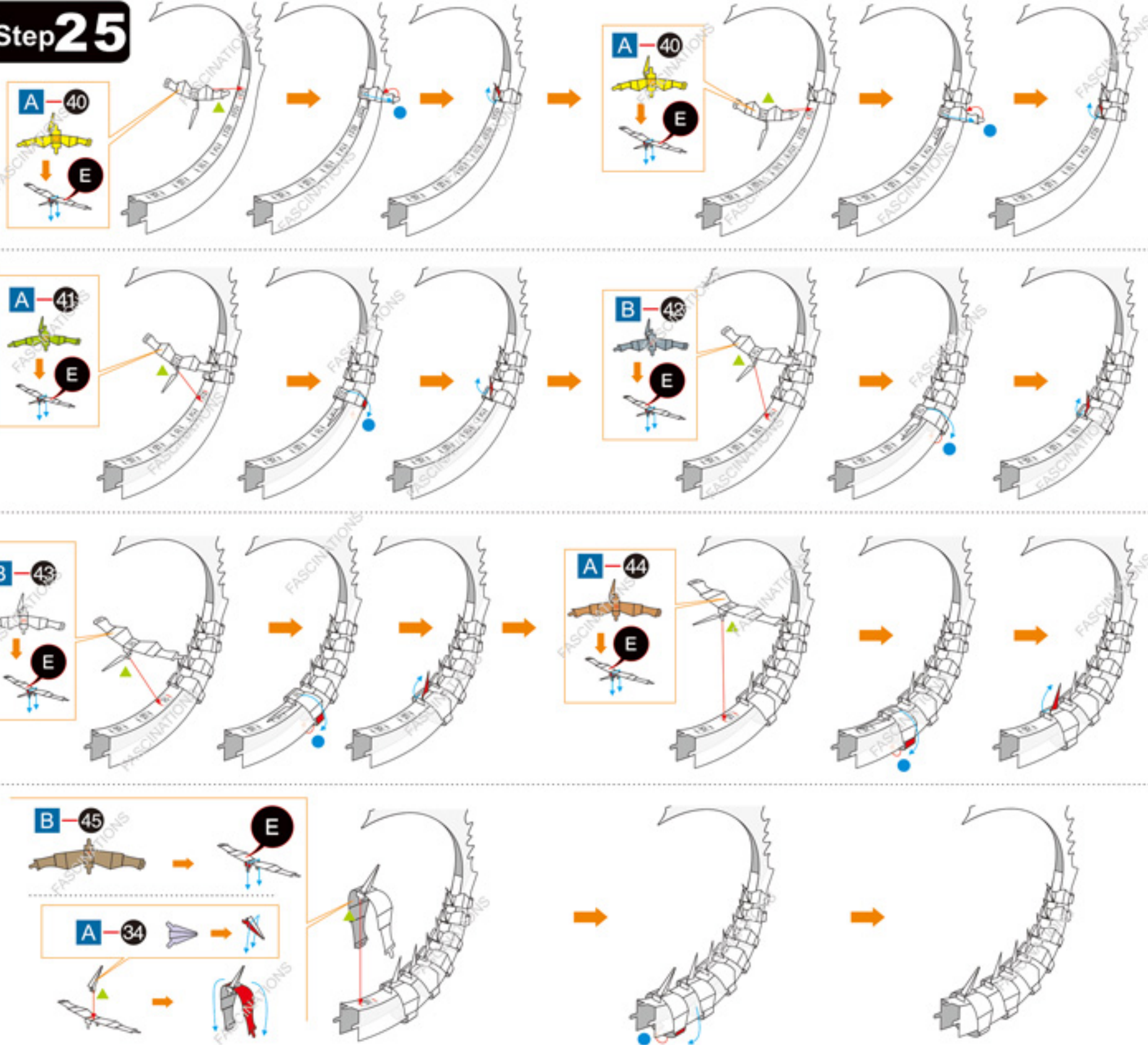
Step 23



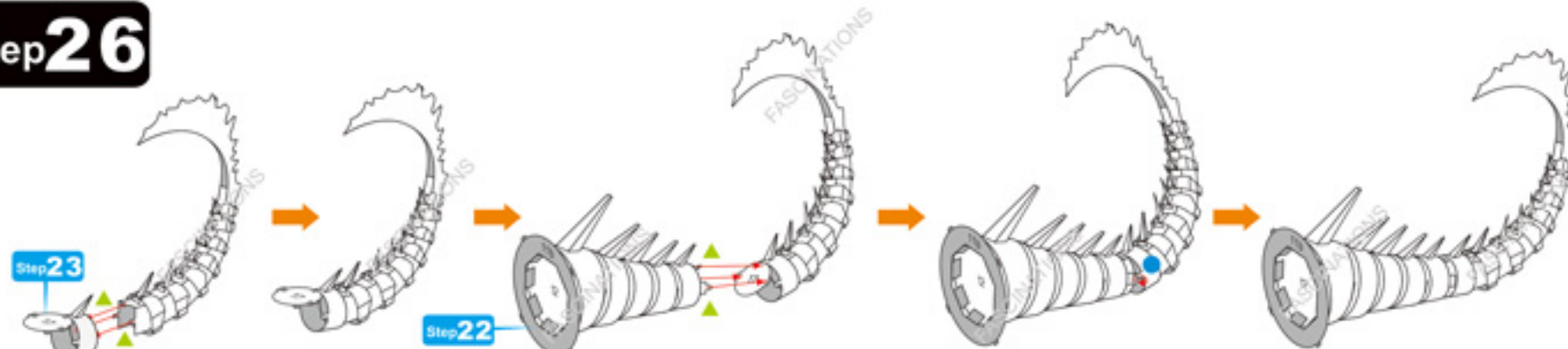
Step 24



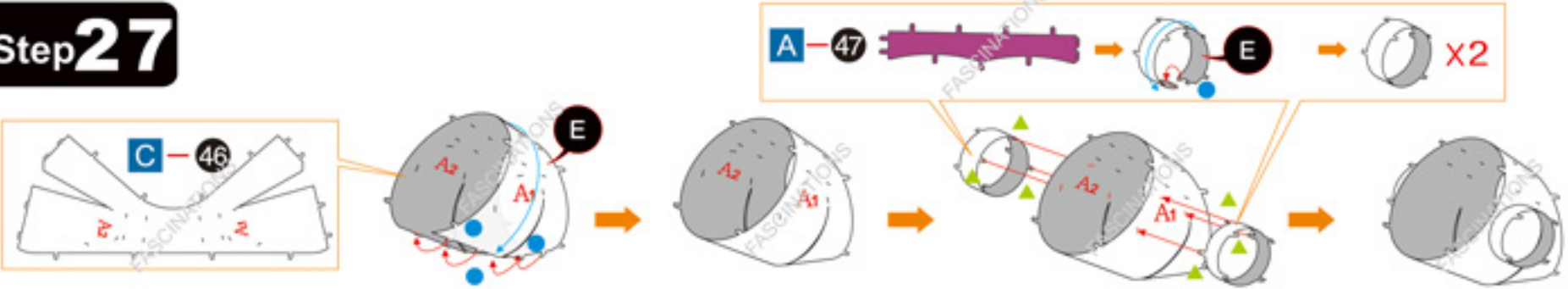
Step 25



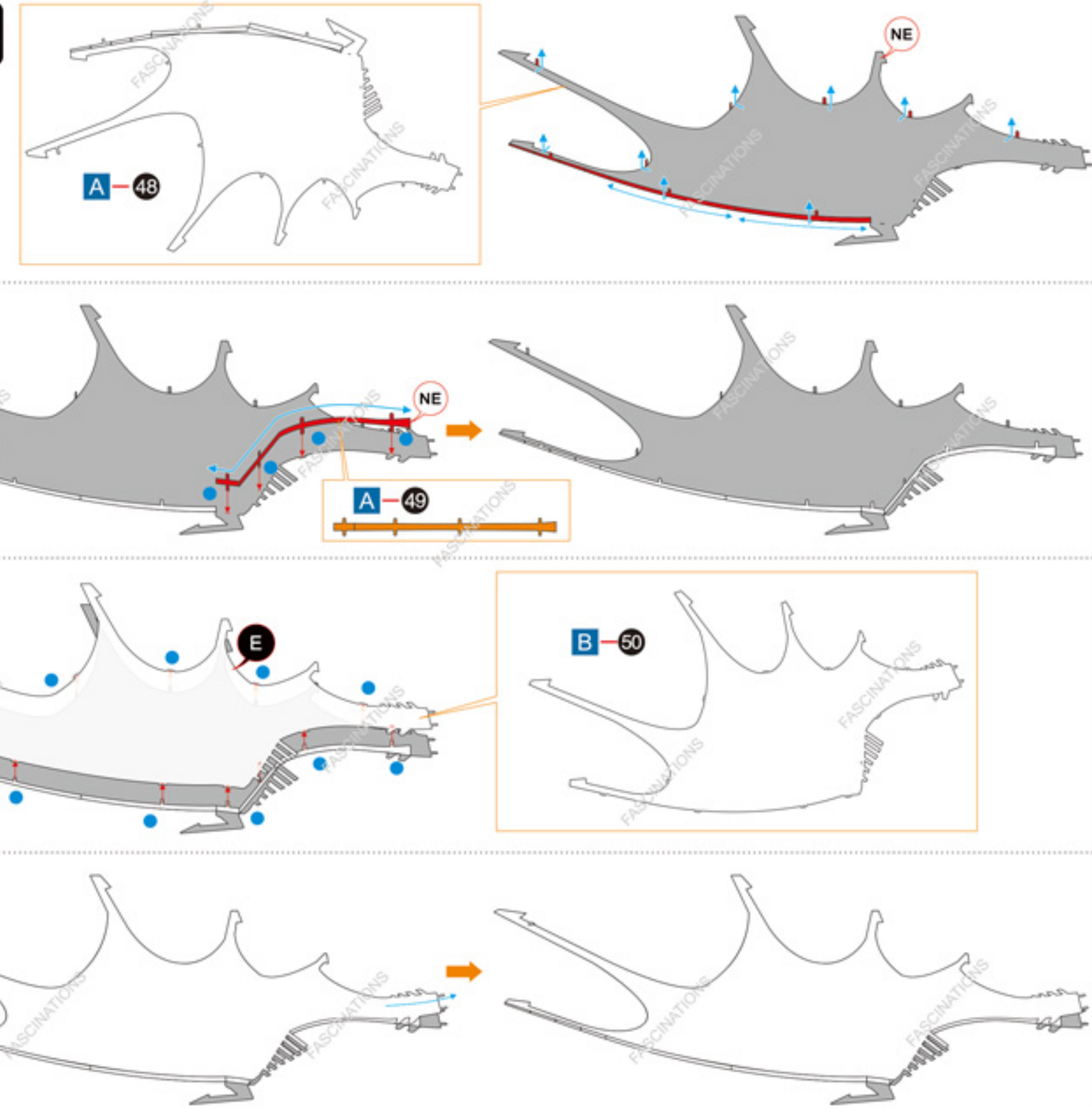
Step 26



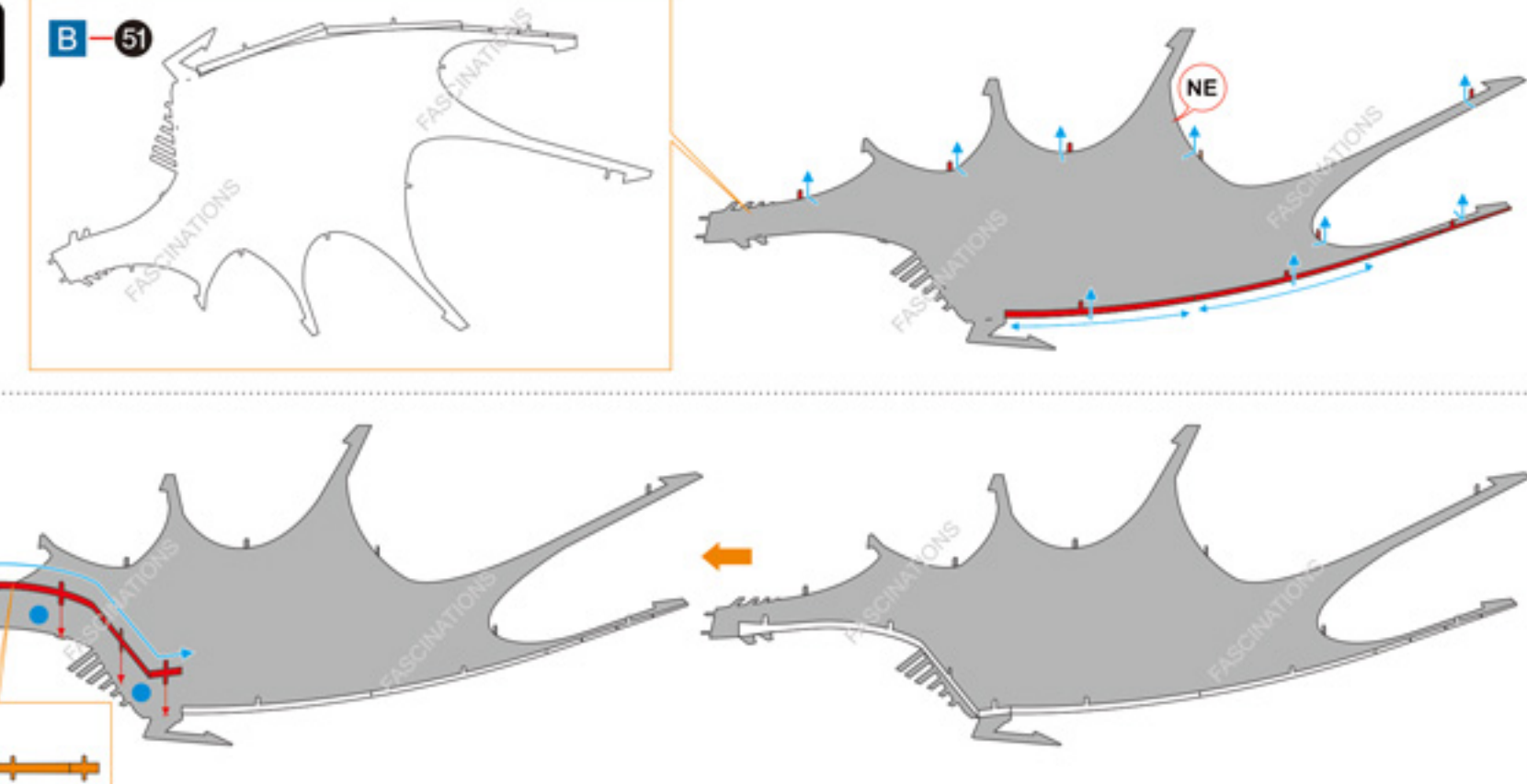
Step 27



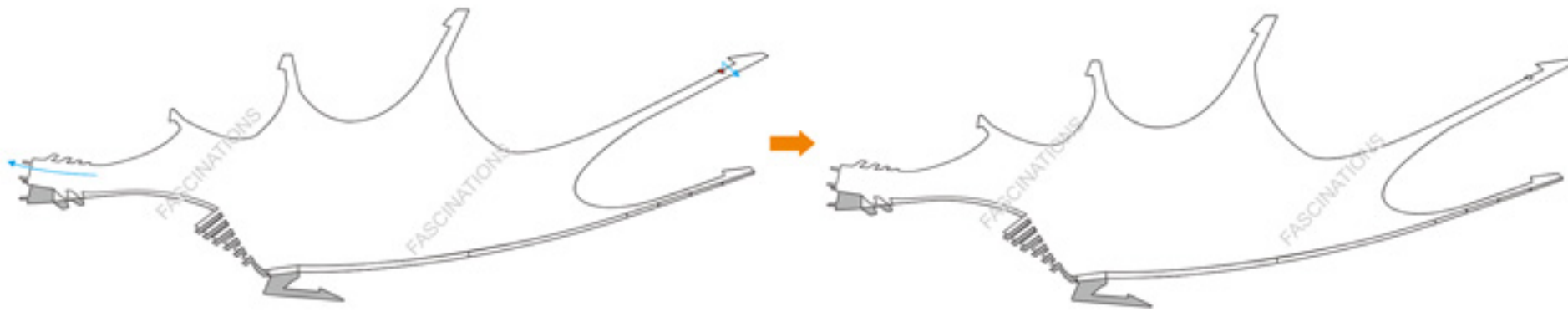
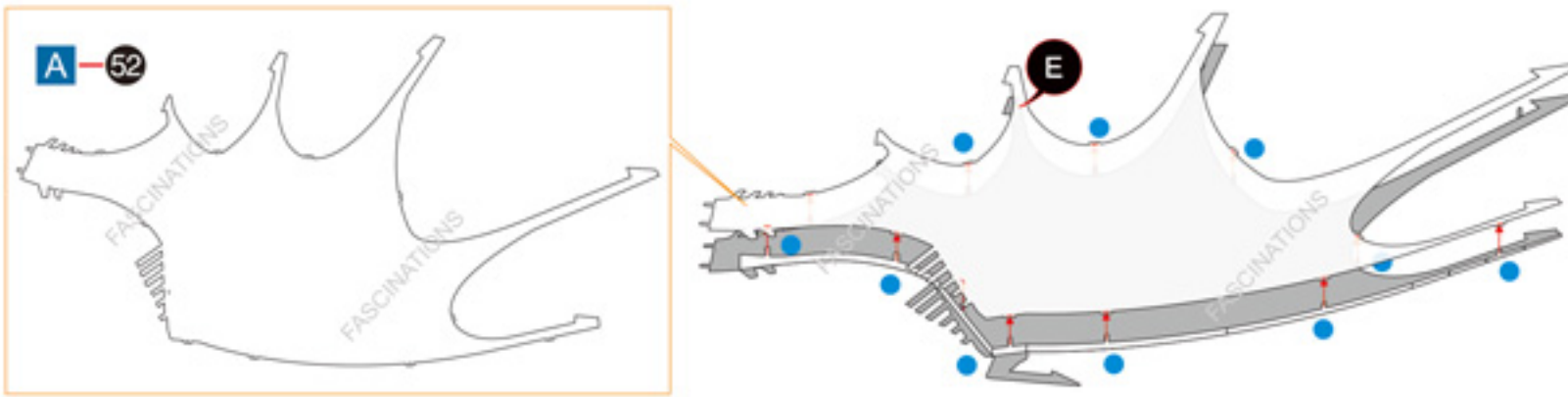
Step 28



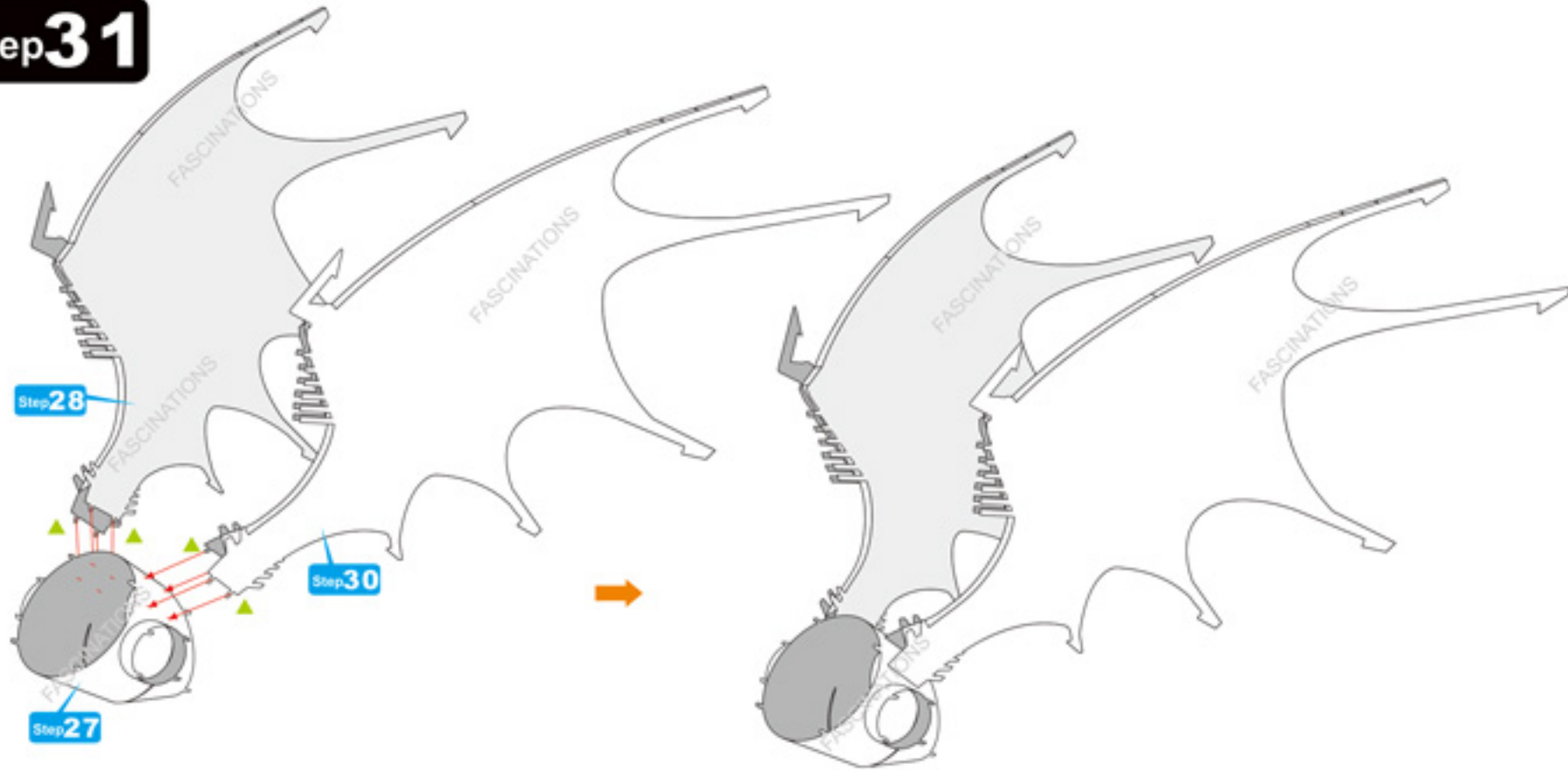
Step 29



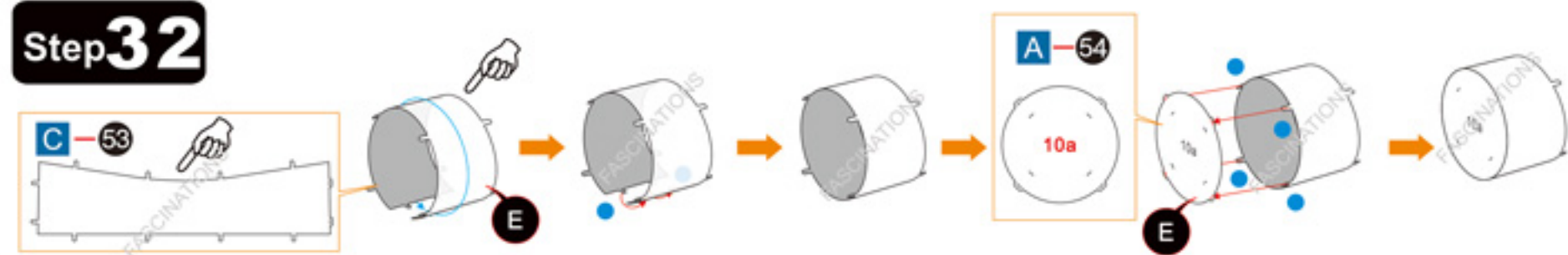
Step 30



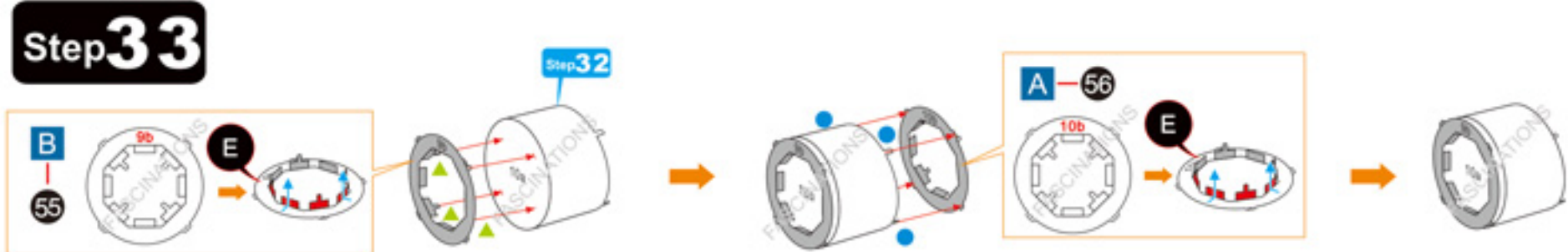
Step 31



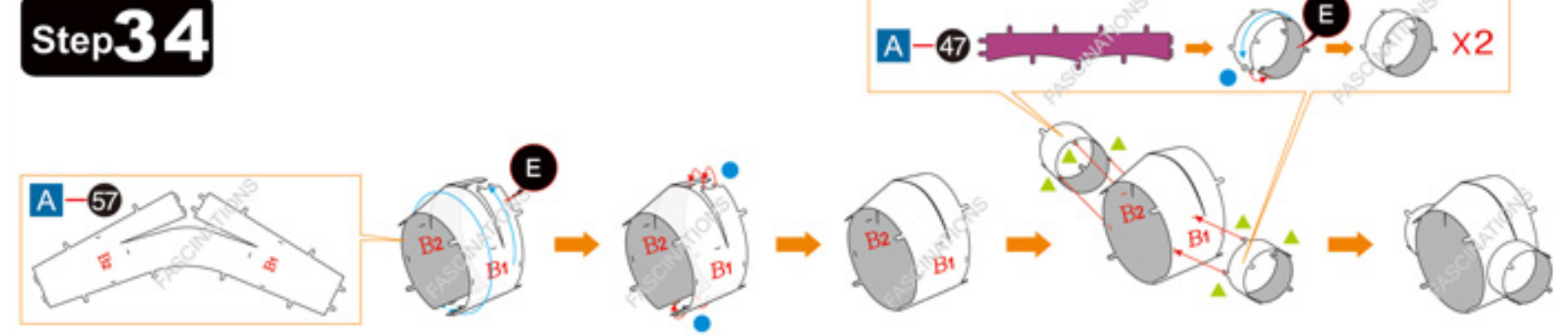
Step 32



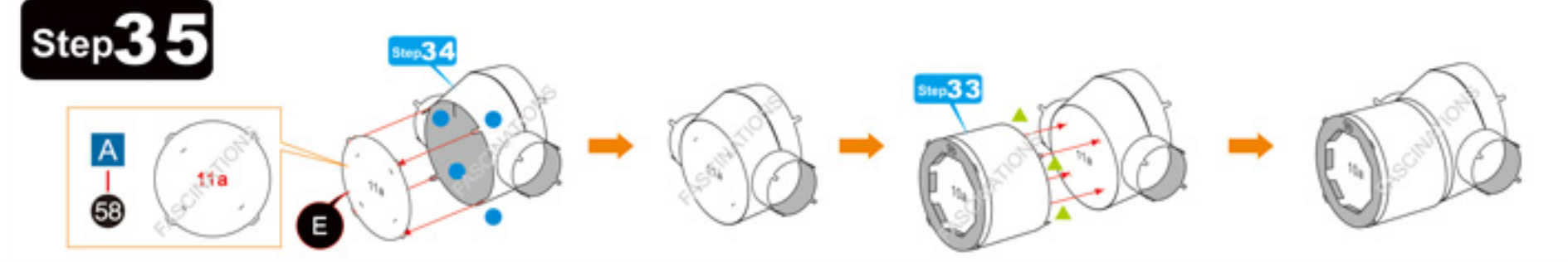
Step 33



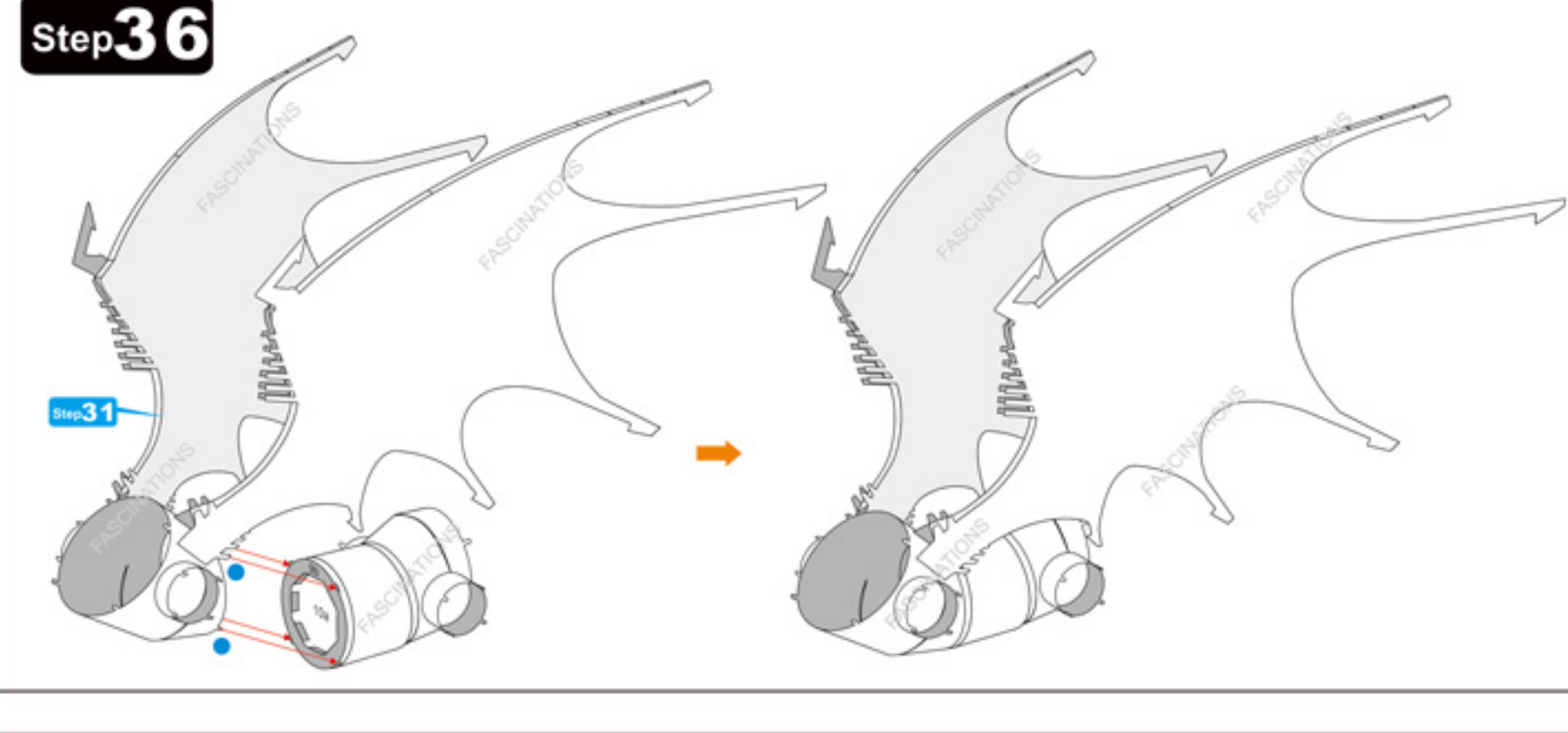
Step 34



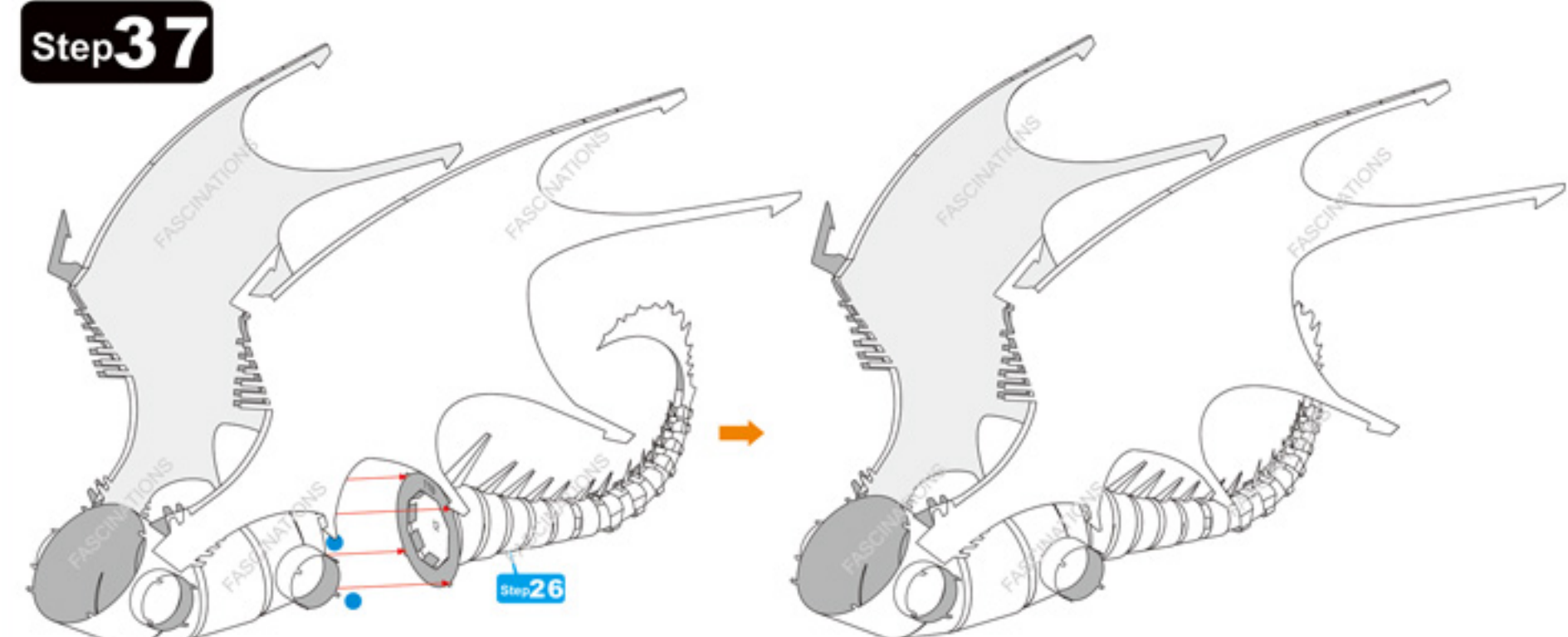
Step 35



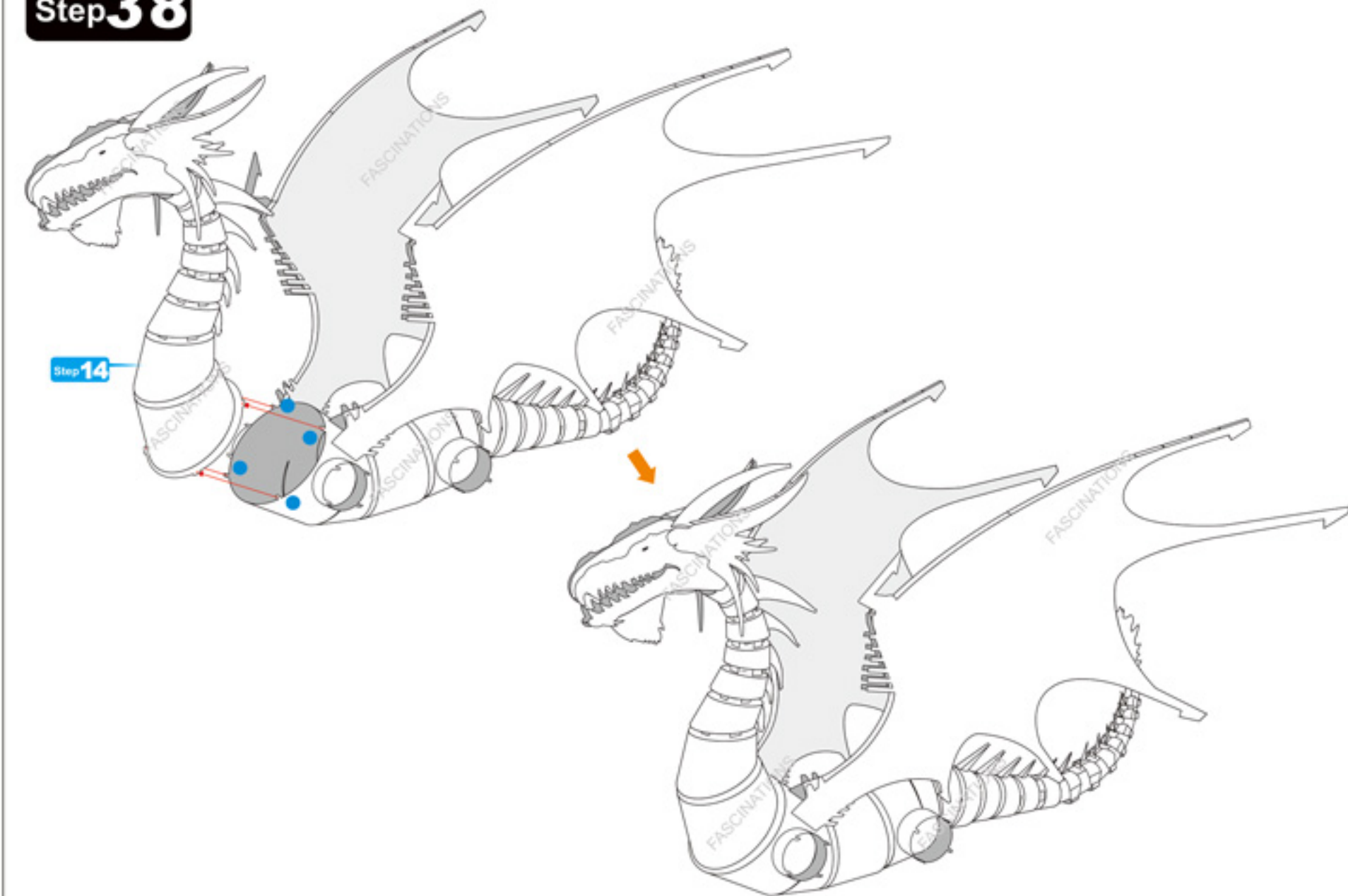
Step 36



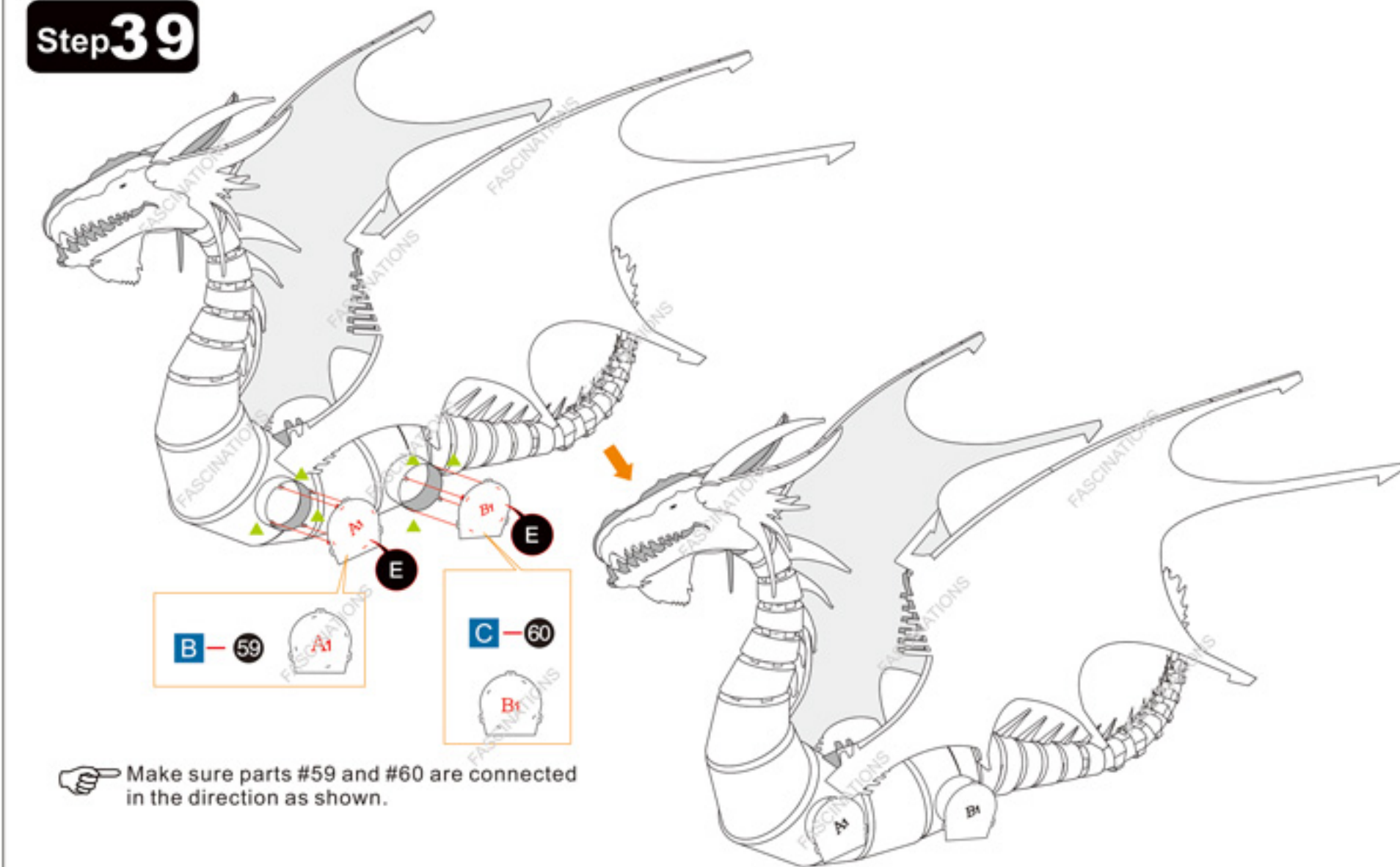
Step 37



Step 38

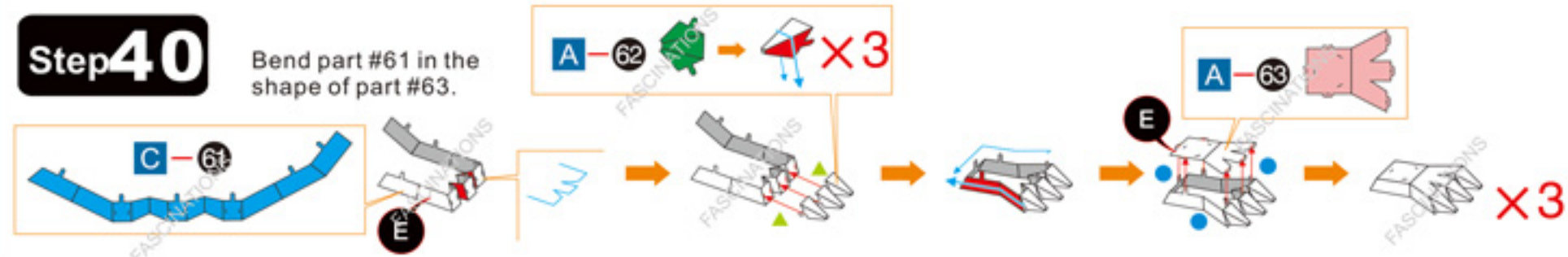


Step 39

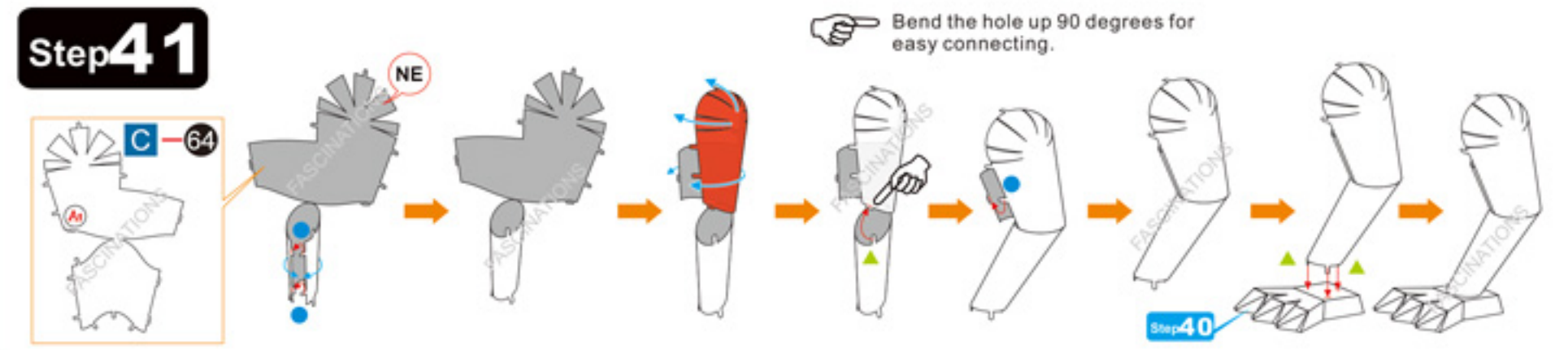


Step 40

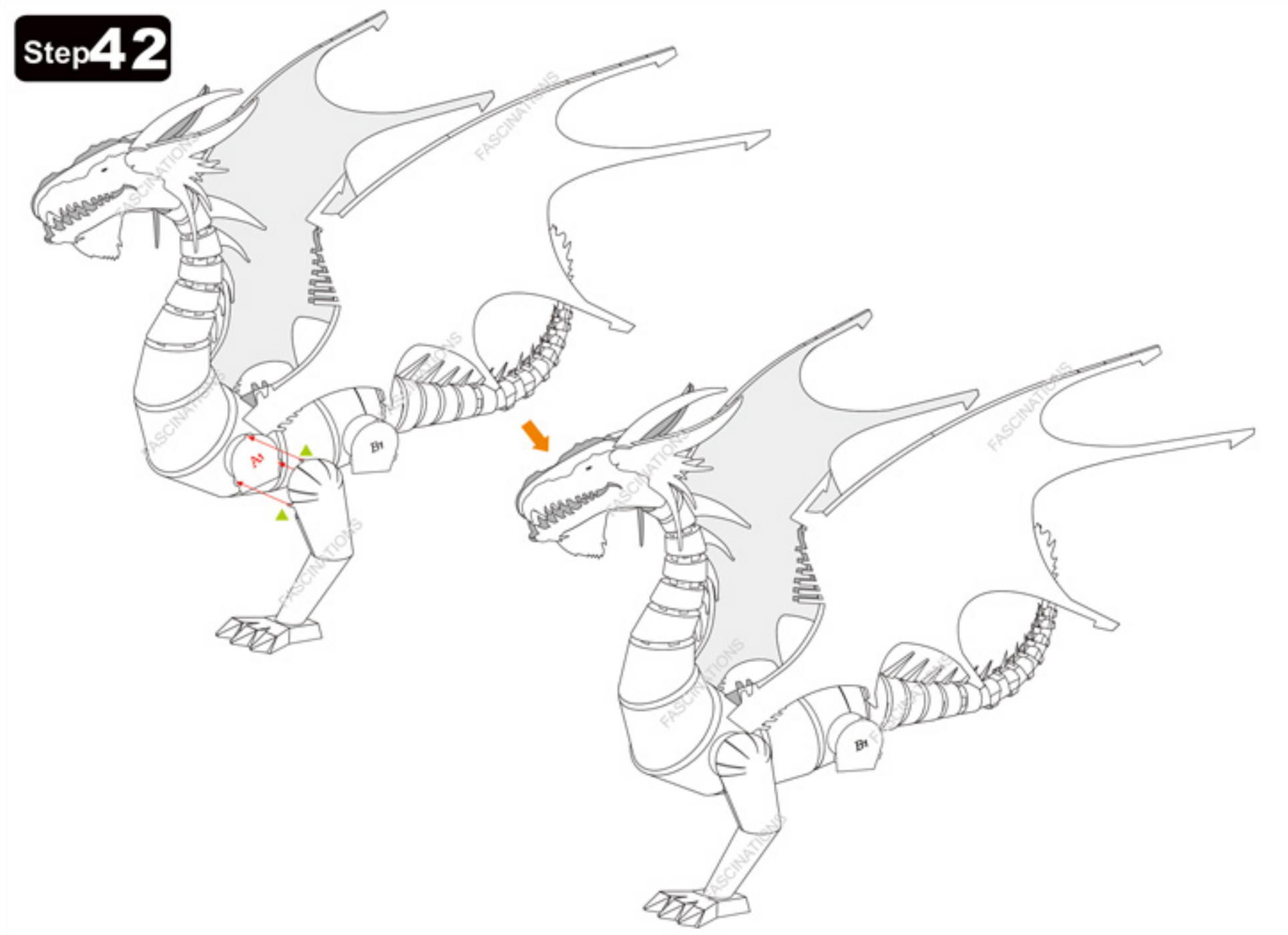
Bend part #61 in the shape of part #63.



Step 41

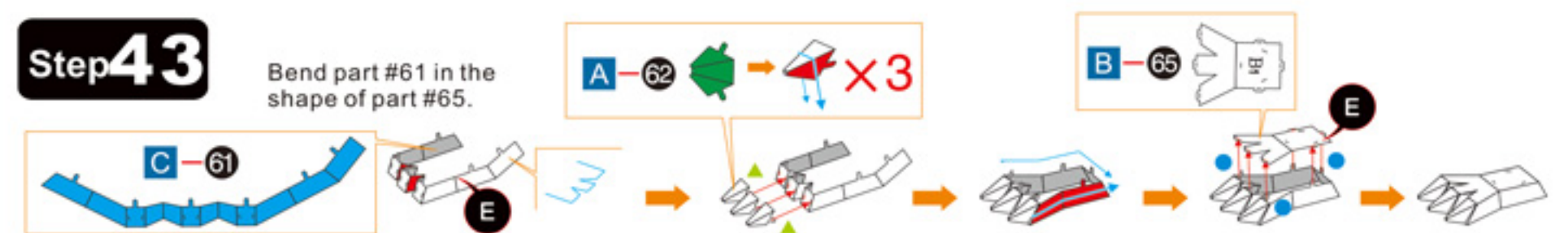


Step 42



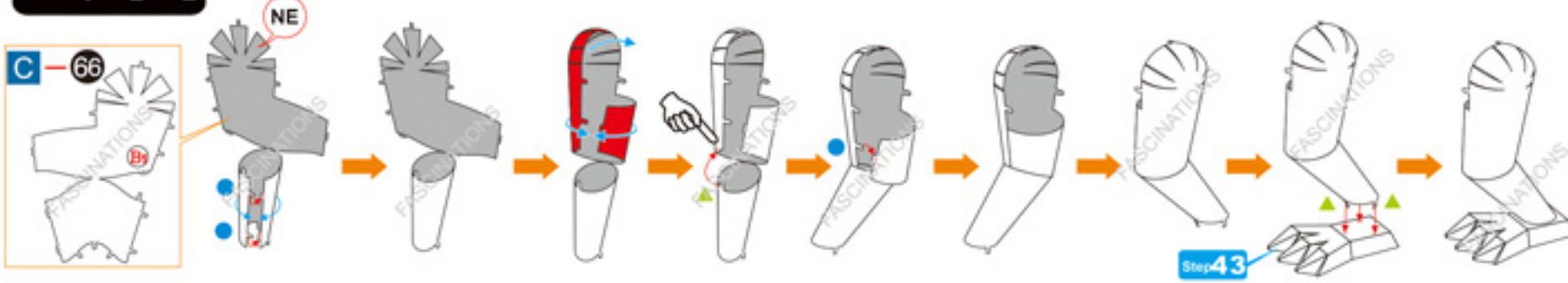
Step 43

Bend part #61 in the shape of part #65.

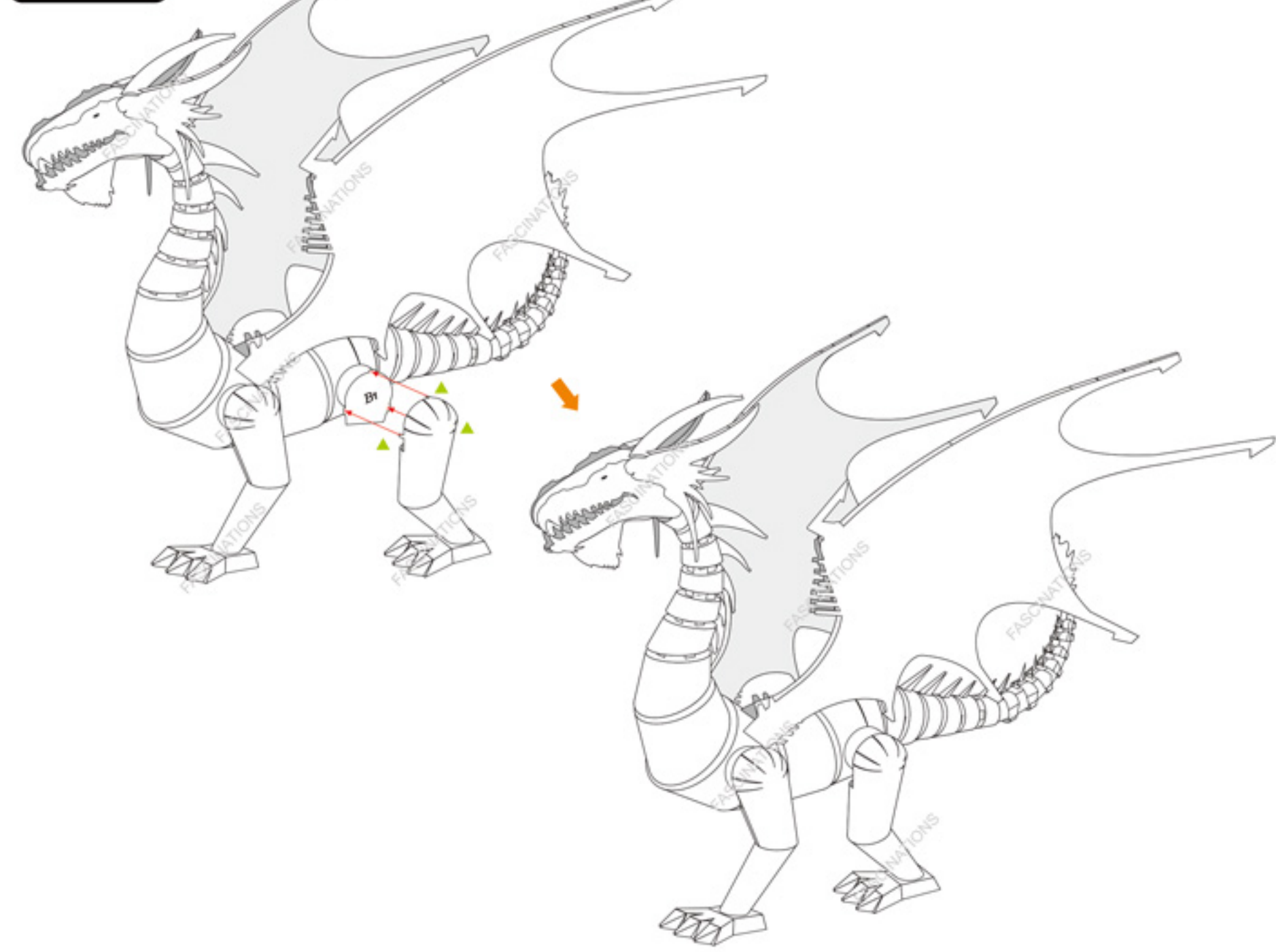


Step 44

Bend the hole up 90 degrees for easy connecting.

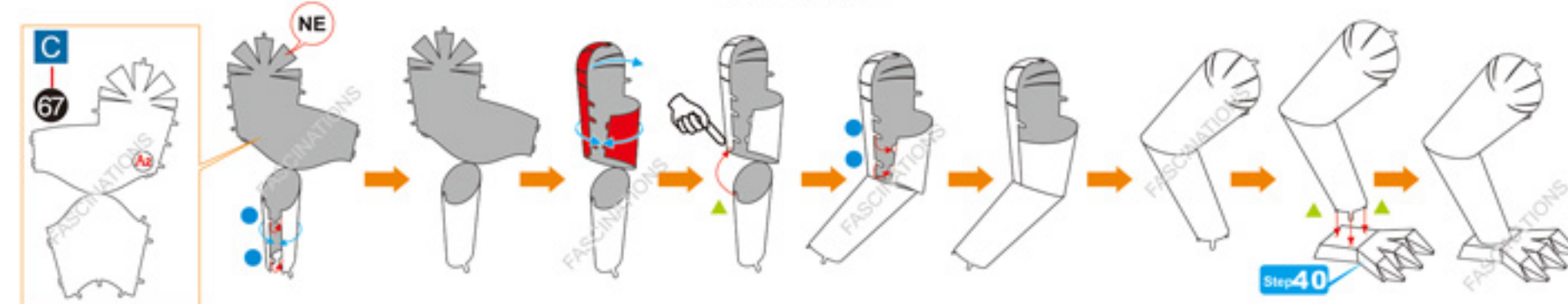


Step 45



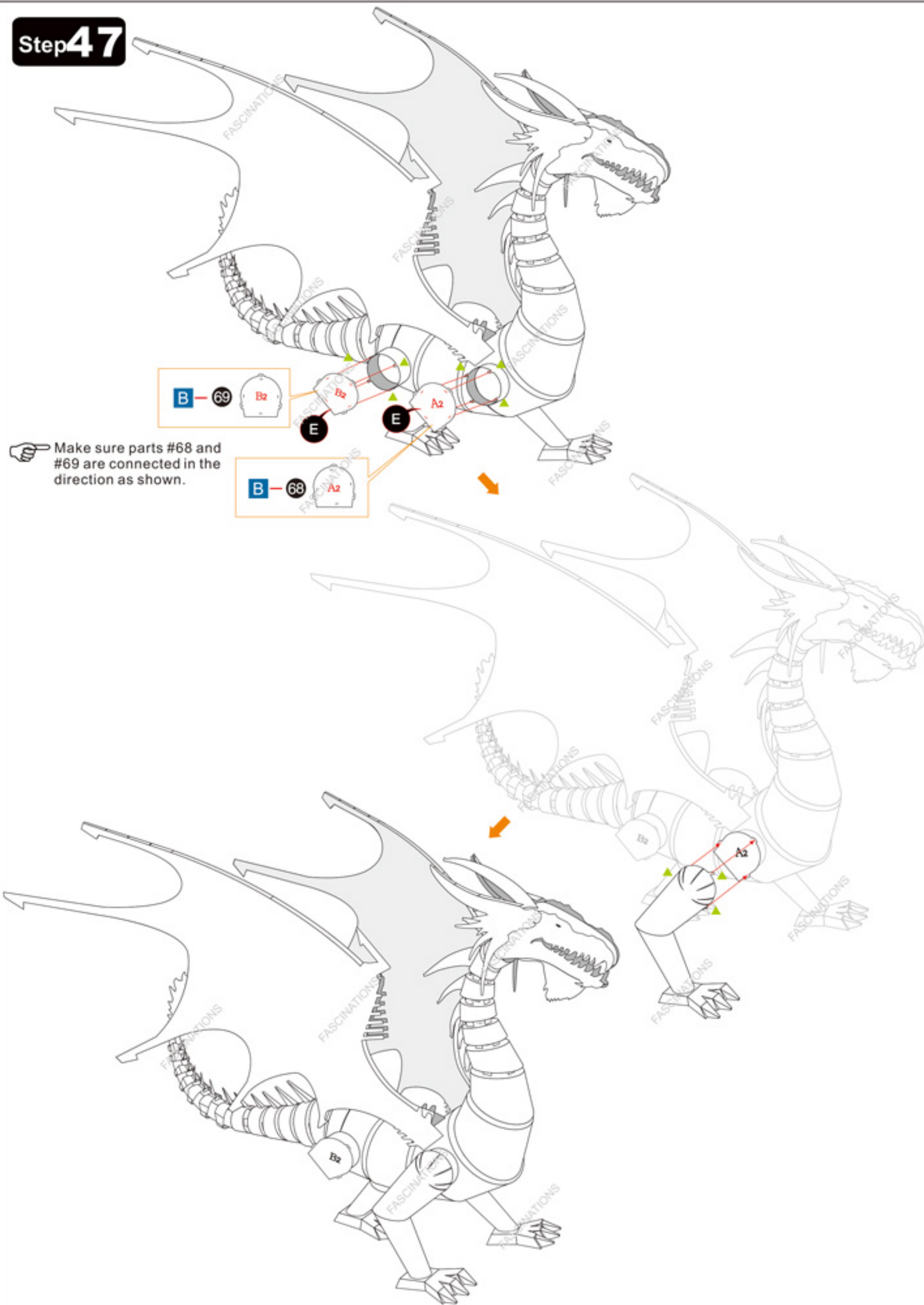
Step 46

Bend the hole up 90 degrees for easy connecting.



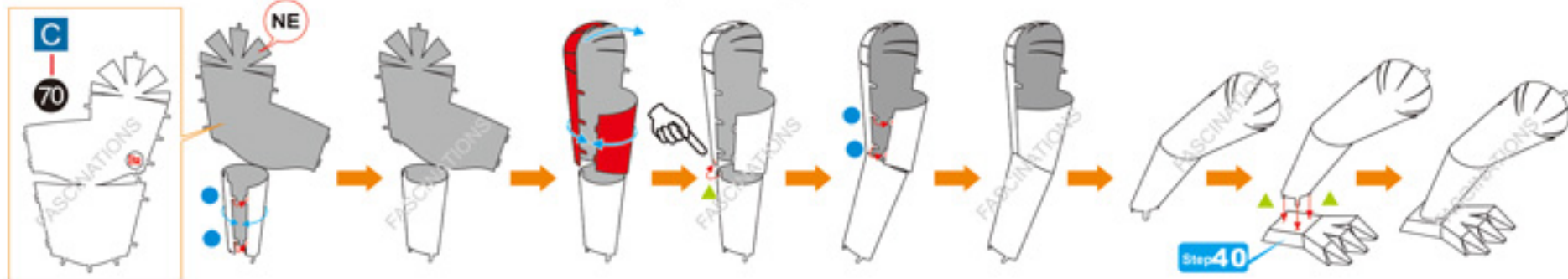
Step 47

Make sure parts #68 and #69 are connected in the direction as shown.

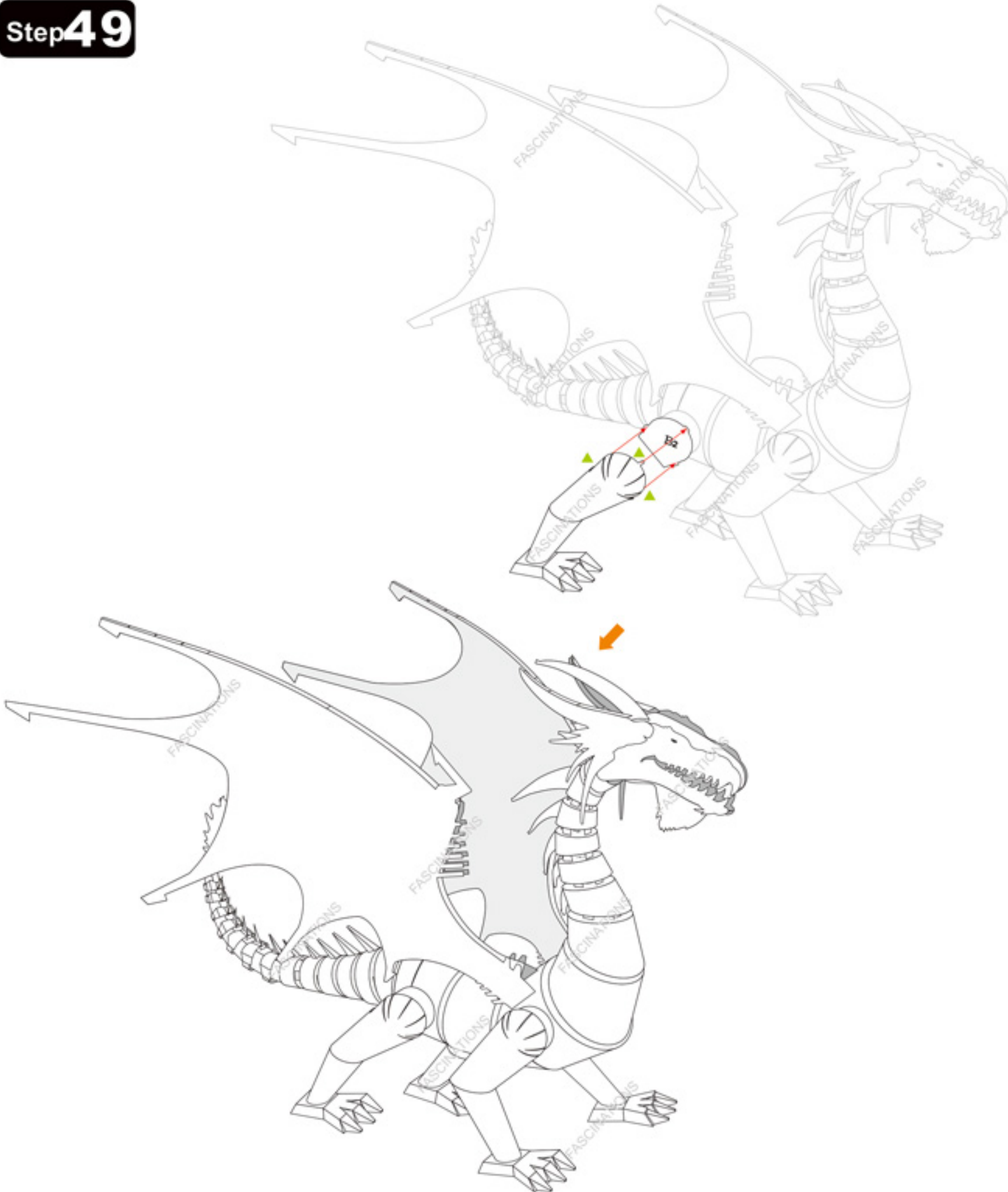


Step 48

Bend the hole up 90 degrees for easy connecting.



Step 49



Step 50

