

GRADE
1

SCIENCE

Graphic Organizers



Table of Contents

Introduction	1
1. Living & Non-Living Things - Assessment Quiz/ Graphic Organizer	2
2. All About Plants - Assessment Quiz/ Graphic Organizer	4
3. All About Animals - Assessment Quiz/ Graphic Organizer.....	6
4. Animal Groups - Assessment Quiz/ Graphic Organizer	8
5. Where do Animals Live? - Assessment Quiz/ Graphic Organizer	10
6. Life Cycles - Assessment Quiz/ Graphic Organizer	12
7. Food Chains - Assessment Quiz/ Graphic Organizer	14
8. Senses - Assessment Quiz/ Graphic Organizer	16
9. Human Body - Assessment Quiz/ Graphic Organizer	18
10. Weather - Assessment Quiz/ Graphic Organizer.....	20
11. Seasons - Assessment Quiz/ Graphic Organizer	22
12. The Sky - Assessment Quiz/ Graphic Organizer	24
13. Earth's Resources - Assessment Quiz/ Graphic Organizer	26
14. Land, Water & Air - Assessment Quiz/ Graphic Organizer.....	28
15. Taking Care of the Earth - Assessment Quiz/ Graphic Organizer	30
16. Matter	32
17. Heat & Energy.....	34
18. Forces & Motion - Assessment Quiz/ Graphic Organizer.....	36
19. Sound - Assessment Quiz/ Graphic Organizer	38
20. Electricity - Assessment Quiz/ Graphic Organizer	40
21. All About Magnets - Assessment Quiz/ Graphic Organizer	42
22. Science in Our World - Assessment Quiz/ Graphic Organizer	44
23. Lab Skills & Inquiry - Assessment Quiz/ Graphic Organizer	46
24. Math in Science - Assessment Quiz/ Graphic Organizer	48
25. Did You Know? - Assessment Quiz/ Graphic Organizer	50
ANSWER KEY	52



Phone: 800-507-0966

Fax: 800-507-0967

www.newpathlearning.com

ISBN 978-1-63212-078-6

NewPath Learning® Products are developed by teachers using research-based principles and are classroom tested. The company's product line consists of an array of proprietary curriculum review games, workbooks, charts, posters, visual learning guides, interactive whiteboard software and other teaching resources. All products are supplemented with web-based activities, assessments and content to provide an engaging means of educating students on key, curriculum-based topics correlated to applicable state and national education standards.

Copyright © MMXIV New Path Learning. All Rights Reserved.

Printed in the United States of America.

1. Living & Nonliving Things

If something is **living** - it is **alive**!
If something is a **nonliving** thing, it means it is **not** alive.

Write 8 **living** things in the box below:

Living Things	
1.	_____
2.	_____
3.	_____
4.	_____
5.	_____
6.	_____
7.	_____
8.	_____

Write 8 **nonliving** things in the box below:

Nonliving Things	
1.	_____
2.	_____
3.	_____
4.	_____
5.	_____
6.	_____
7.	_____
8.	_____

1. Living & Nonliving Things Quiz

1

Which one is a **living** thing?

- A a rock
- B a car
- C a hat
- D a cat



5

Plants and animals need _____ to grow and live.

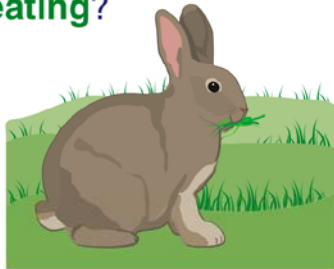
- A the moon
- B water
- C rocks
- D cars



2

Living things need **food**. What is this rabbit **eating**?

- A a tree
- B grass
- C a bug
- D a car



6

A **nonliving** thing is **not** alive. Which one is a **nonliving** thing?

- A a dog
- B a bird
- C a rock
- D a plant



3

A **living** thing can have **babies**. A _____ is a **baby** dog.

- A puppy
- B cat
- C cow
- D cub



7

A _____ **cannot** move by itself.

- A chair
- B bird
- C cat
- D dog



4

A **plant** is _____, which means it is a living thing that can **make its own food**.

- A an animal
- B a producer
- C a consumer
- D a nonliving thing



8

Which thing can **grow**?

- A a can
- B an ant
- C dirt
- D a rock



2. All About Plants

Plants have **four** main parts.

Draw each plant part.

Plant Part	Draw a Picture
Roots	
Stem	
Leaves	
Flower	

2. All About Plants Quiz

1

Plants need _____ to grow.

- A animals
- B trees
- C rocks
- D water



5

What keeps a plant **in the soil**?

- A the plant's stem
- B the plant's flower
- C the plant's roots
- D the plant's leaves



2

How do plants **get water**?

- A from the rain
- B from trees
- C from grass
- D from rocks



6

The _____ takes **water from the roots** to the rest of the plant.

- A seeds
- B flower
- C leaves
- D stem



3

What does a **seed have inside** of it?

- A a tiny plant
- B soil
- C water
- D flower petals



7

Food is made in the _____ of green plants.

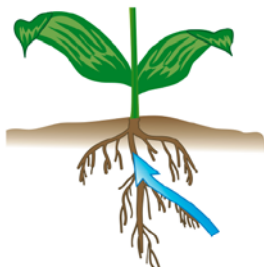
- A roots
- B leaves
- C stem
- D flower



4

The _____ takes in **water from the soil** for the plant.

- A roots
- B leaves
- C flowers
- D stem



8

The **flower's job** is to _____.

- A take in water from the soil
- B keep the plant standing up tall
- C make food for the plant
- D make seeds



3. All About Animals

Animals use their body parts to **eat**, **move**, and to **protect** themselves!

Tell what these animals use their body parts to do.

Animal	Body Part	What does it help the animal do?
bird	feathers	<hr/> <hr/> <hr/> <hr/>
elephant	trunk	<hr/> <hr/> <hr/> <hr/>
tiger	sharp claws	<hr/> <hr/> <hr/> <hr/>
monkey	arms	<hr/> <hr/> <hr/> <hr/>

3. All About Animals Quiz

1

All animals need to _____ to live.

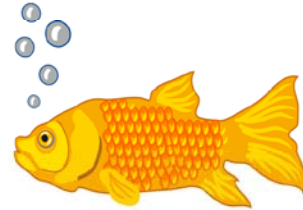
- A run fast
- B cry
- C talk
- D drink water



5

Fish live in the water and use their _____ to breathe.

- A tail
- B gills
- C lungs
- D fins



2

A _____ is a place that keeps animals safe.

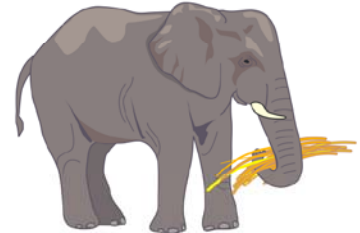
- A shelter
- B hut
- C building
- D road



6

What does an elephant use to pick up food?

- A its arms
- B its trunk
- C its legs
- D its ears



3

What do all animals do?

- A eat food
- B make their own food
- C swim
- D fly



7

What does an owl use to catch a mouse?

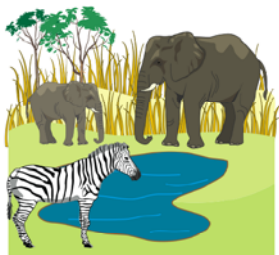
- A its tail
- B its feathers
- C its claws
- D its ears



4

Animals that live on land use their _____ to breathe.

- A scales
- B gills
- C lungs
- D eyes



8

Sometimes a _____ looks like her parents when she's born.

- A caterpillar
- B frog
- C puppy
- D butterfly

