

Table of Contents

Introduction	3	New Meaning	24
Dictionary Terms	4	Searching for Suffixes	25
Alphabetizing		Suffix Confusion	26
A to Z	5	Parts of Speech	
Bird Names	6	Do Your Homework	27
Filing	7	Under the Big Top	28
Missing Word	8	Initial Sounds	
Guide Words		Spell Check	29
Finding a Word	9	How Do You Spell Funny?	30
In the Middle	10	Write or Right?	31
Give Me a C	11	Abbreviations and Acronyms	
Absent-Minded Professor	12	Long and Short	32
Definitions		What it Stands For	33
Define This	13	Synonyms, Homographs and Homophones	
Definition Crossword	14	A Good Match	34
Pronunciation		Same and Different	35
How Does That Sound?	15	Tied in Knots	36
Message in a Bottle	16	Etymology	
Syllabication		Original Meaning	37
One, Two, Three	17	Illustrations	
Dividing Words	18	Bird or Beast?	38
A Split Decision	19	Internet Dictionary	
End of the Line	20	Internet Dictionary Overview	39
Shopping List	21	Fact Finder	40
Compound Entries		Versatile Vocabulary	41
Yellow Jacket	22	Unit Assessment	42
Prefixes and Suffixes		Answer Key	46
Perfect Prefixes	23		

A Split Decision

Each of these words has a consonant sound between two vowel sounds.

- Divide a word **before** the consonant when the first vowel sound is **long**.
- Divide a word **after** the consonant when the first vowel sound is **short**.

Decide which rule to use below and circle the correct answer.

1. protect
(prot ect) (pro tect)

9. vanish
(van ish) (va nish)

2. china
(chi na) (chin a)

10. balance
(ba lance) (bal ance)

3. tiger
(tig er) (ti ger)

11. magic
(mag ic) (ma gic)

4. final
(fi nal) (fin al)

12. beneath
(ben eath) (be neath)

5. seaport
(seap ort) (sea port)

13. human
(hum an) (hu man)

6. lemon
(lem on) (le mon)

14. level
(lev el) (le vel)

7. suburb
(sub urb) (su burb)

15. sugar
(su gar) (sug ar)

8. cabin
(cab in) (ca bin)

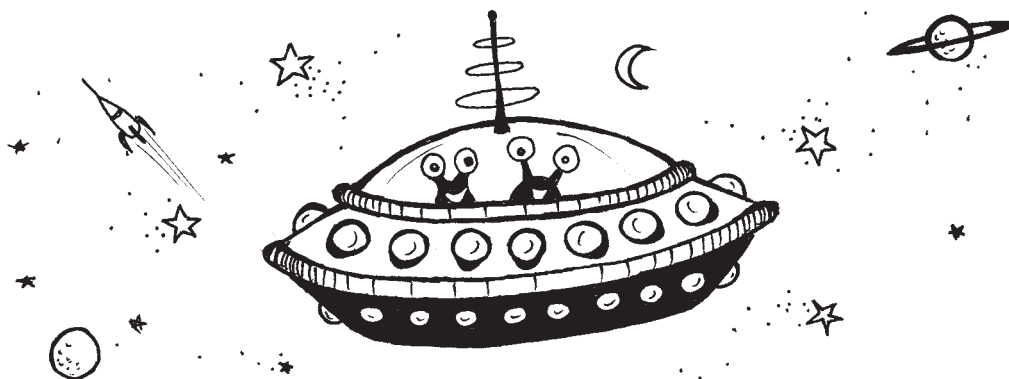
16. travel
(tra vel) (trav el)

Yellow Jacket

A compound entry contains two or more words. When used together, the words have a special meaning and cannot be understood by just looking at the meaning of each word. For example, the entry “yellow jacket” is not the color of a coat, it is a type of bee.

The following word pairs are compound entries. Look them up in your dictionary and write the meaning.

1. role model _____
2. soda fountain _____
3. ghost town _____
4. goose bumps _____
5. point of view _____
6. flying saucer _____
7. leap year _____
8. boiling point _____



The following word pairs are not compound entries. Look at the meaning of each word to determine what the word pair means.

1. baseball hat _____
2. canary yellow _____
3. shower cap _____