

GRADE
4

SCIENCE

Graphic Organizers



Table of Contents

Introduction	1
1. Cells - Building Blocks of Living Things - Graphic Organizer/Assessment Quiz	2
2. Plant Structure & Function - Graphic Organizer/Assessment Quiz	4
3. Plant Growth & Reproduction - Graphic Organizer/Assessment Quiz	6
4. Introduction to Animals - Graphic Organizer/Assessment Quiz	8
5. Invertebrates - Graphic Organizer/Assessment Quiz	10
6. Vertebrates - Graphic Organizer/Assessment Quiz	12
7. Animal Growth & Reproduction - Graphic Organizer/Assessment Quiz.....	14
8. Organ Systems - Graphic Organizer/Assessment Quiz.....	16
9. Classifying Organisms - Graphic Organizer/Assessment Quiz.....	18
10. Fossils & Extinct Animals - Graphic Organizer/Assessment Quiz	20
11. Ecosystems - Graphic Organizer/Assessment Quiz	22
12. Food Webs/Food Chains - Graphic Organizer/Assessment Quiz	24
13. Rocks & Minerals - Graphic Organizer/Assessment Quiz	26
14. Earth - Inside & Out - Graphic Organizer/Assessment Quiz.....	28
15. Earth's Waters - Graphic Organizer/Assessment Quiz	30
16. Our Solar System & Beyond - Graphic Organizer/Assessment Quiz	32
17. Weather & Climate - Graphic Organizer/Assessment Quiz.....	34
18. Matter - Graphic Organizer/Assessment Quiz.....	36
19. Force, Motion & Energy - Graphic Organizer/Assessment Quiz.....	38
20. Electricity & Magnetism - Graphic Organizer/Assessment Quiz.....	40
21. Light - Graphic Organizer/Assessment Quiz	42
22. Science in Our World - Graphic Organizer/Assessment Quiz	44
23. Lab Skills & Science Inquiry - Graphic Organizer/Assessment Quiz.....	46
24. Math in Science - Graphic Organizer/Assessment Quiz	48
25. Did you know? - Graphic Organizer/Assessment Quiz	50
ANSWER KEY	52



Phone: 800-507-0966

Fax: 800-507-0967

www.newpathlearning.com

ISBN 978-1-63212-081-6

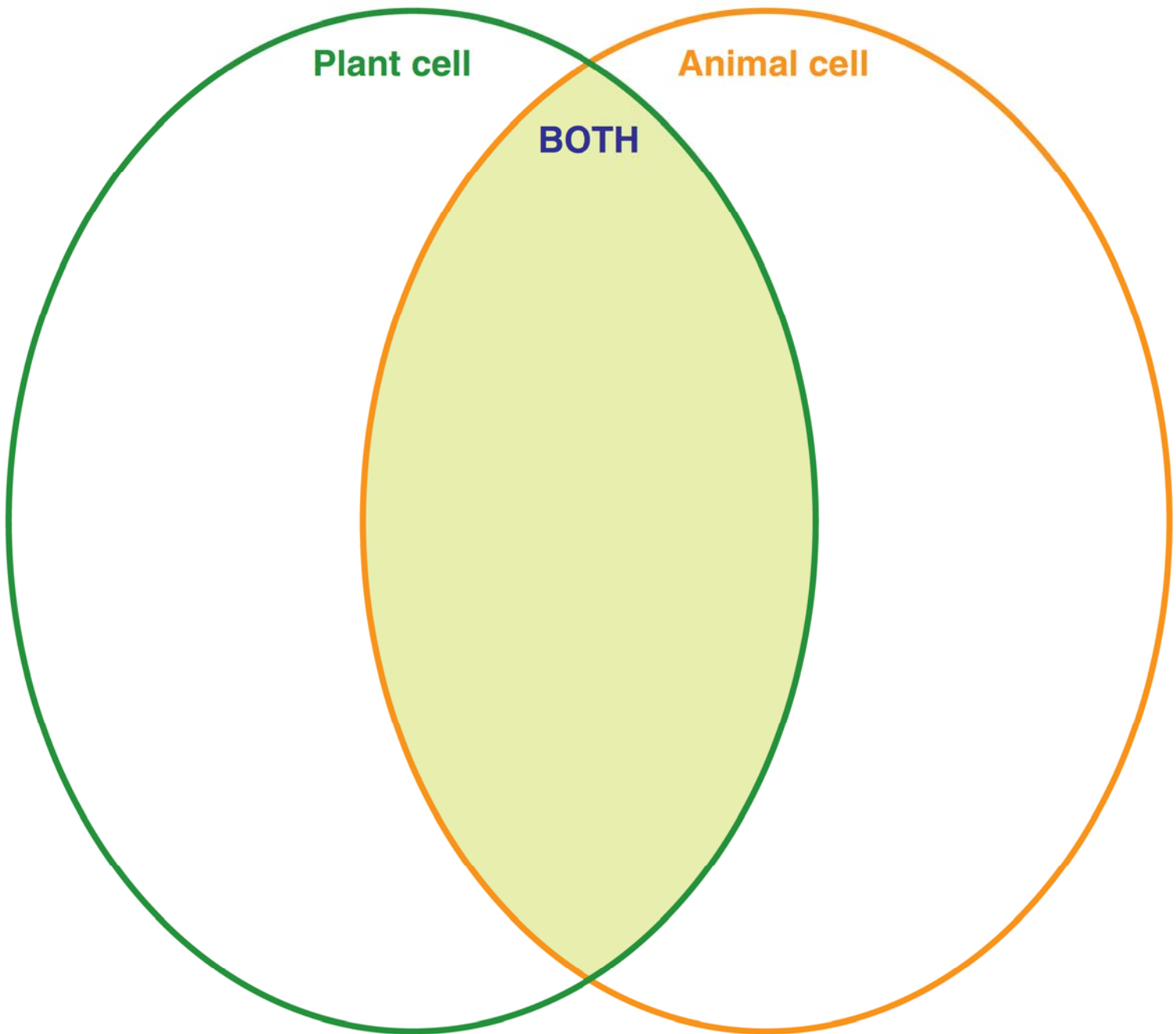
NewPath Learning® Products are developed by teachers using research-based principles and are classroom tested. The company's product line consists of an array of proprietary curriculum review games, workbooks, charts, posters, visual learning guides, interactive whiteboard software and other teaching resources. All products are supplemented with web-based activities, assessments and content to provide an engaging means of educating students on key, curriculum-based topics correlated to applicable state and national education standards.

Copyright © MMXIV New Path Learning. All Rights Reserved.

Printed in the United States of America.

1. Cells-Building Blocks of Living Things

Label the parts of an animal and a plant cell. If the cells have a similar part, place those in the **BOTH** area, if they have different parts, place those parts in the **plant** or **animal** section.



1. Cells Quiz

1

Cells are the **building blocks** of life. Which sentence supports this statement the best?

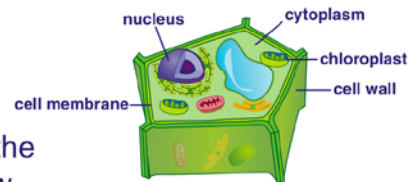
- A** All cells are large.
- B** All living things are made of cells.
- C** You need a microscope to see cells.
- D** Cells come in different shapes.



5

What is the **main job** of the **cytoplasm** in a cell?

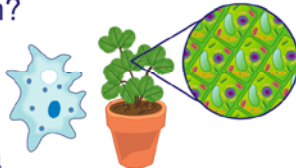
- A** to feed the cell
- B** to help the cell grow
- C** to help the cell move
- D** to hold all cell parts in place



2

Which structures do both **animal and plant cells** contain?

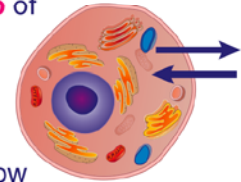
- A** a cell wall and chloroplast
- B** a cell wall and a cell membrane
- C** a nucleus and a cell membrane
- D** a nucleus and chloroplast



6

The **cell membrane** separates the cell from everything outside the cell. It **guards** everything that comes in and out of the cell. What is the **main job** of the cell membrane?

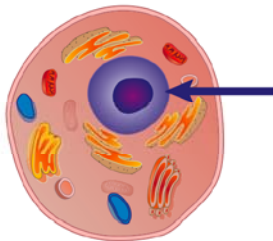
- A** to move the cell
- B** to feed the cell
- C** to help the cell grow
- D** to protect the inside of the cell



3

What cell part is the arrow pointing to on the diagram of this **animal cell**?

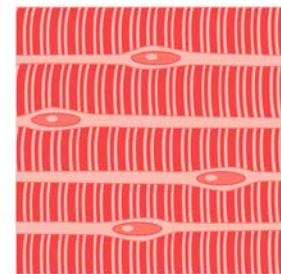
- A** cell wall
- B** nucleus
- C** cell membrane
- D** cytoplasm



7

A **group** of one kind of **cell** is a _____.

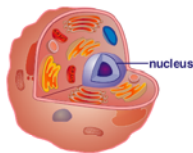
- A** system
- B** organ
- C** tissue
- D** body



4

The **nucleus** of the cell holds all the **instructions** for the cell's activities. It is the nucleus' job to tell all the cell parts what to do in order to keep the cell **working properly**. Which is the best **job title** of the cell nucleus?

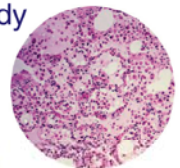
- A** the student
- B** the doctor
- C** the janitor
- D** the control center



8

A human body is made up of **many types of tissues**. Why does the body have **different** tissues?

- A** because tissues are large
- B** because tissues are small
- C** because all tissues have the same job
- D** because each tissue type has its own job to do



2. Plant Structure & Function

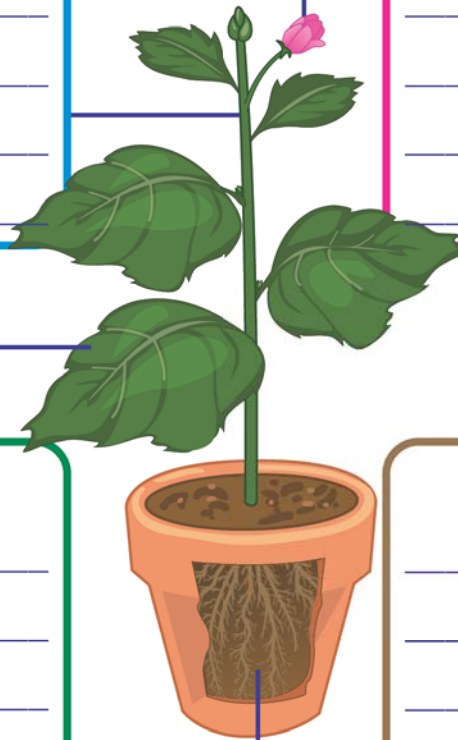
Write the **function** and **importance** of each plant structure in the appropriate boxes below.

STEM

FLOWER

LEAVES

ROOTS



2. Plant Structure & Function Quiz

1

Like every **living thing**, **plants** are made up of _____.

- A leaves
- B oxygen
- C cells
- D carbon dioxide



5

In what part of the plant is **food for the plant** made through **photosynthesis**?

- A stem
- B roots
- C flower
- D leaves



2

Plants take in _____ from the air around them, which they use to **make** their own **food**.

- A oxygen
- B chlorophyll
- C nutrients
- D carbon dioxide



6

What are the **two** important materials needed for **photosynthesis**?



- A carbon dioxide and water
- B oxygen and carbon dioxide
- C oxygen and chloroplast
- D carbon dioxide and nitrogen

3

Which part of the plant has the job of **collecting water** and **minerals from soil**?

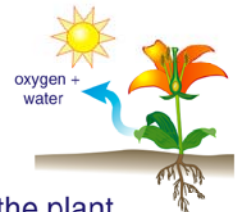
- A roots
- B stem
- C leaves
- D flower



7

How do **oxygen** and **water** leave the plant?

- A through the roots of the plant
- B through the stem of the plant
- C through tiny holes located under each leaf
- D through the seeds of the plant



4

What is the **main job** of a plant's **stem**?

- A to collect nutrients from air
- B to catch sunlight
- C to make food
- D to carry water and minerals throughout plant



8

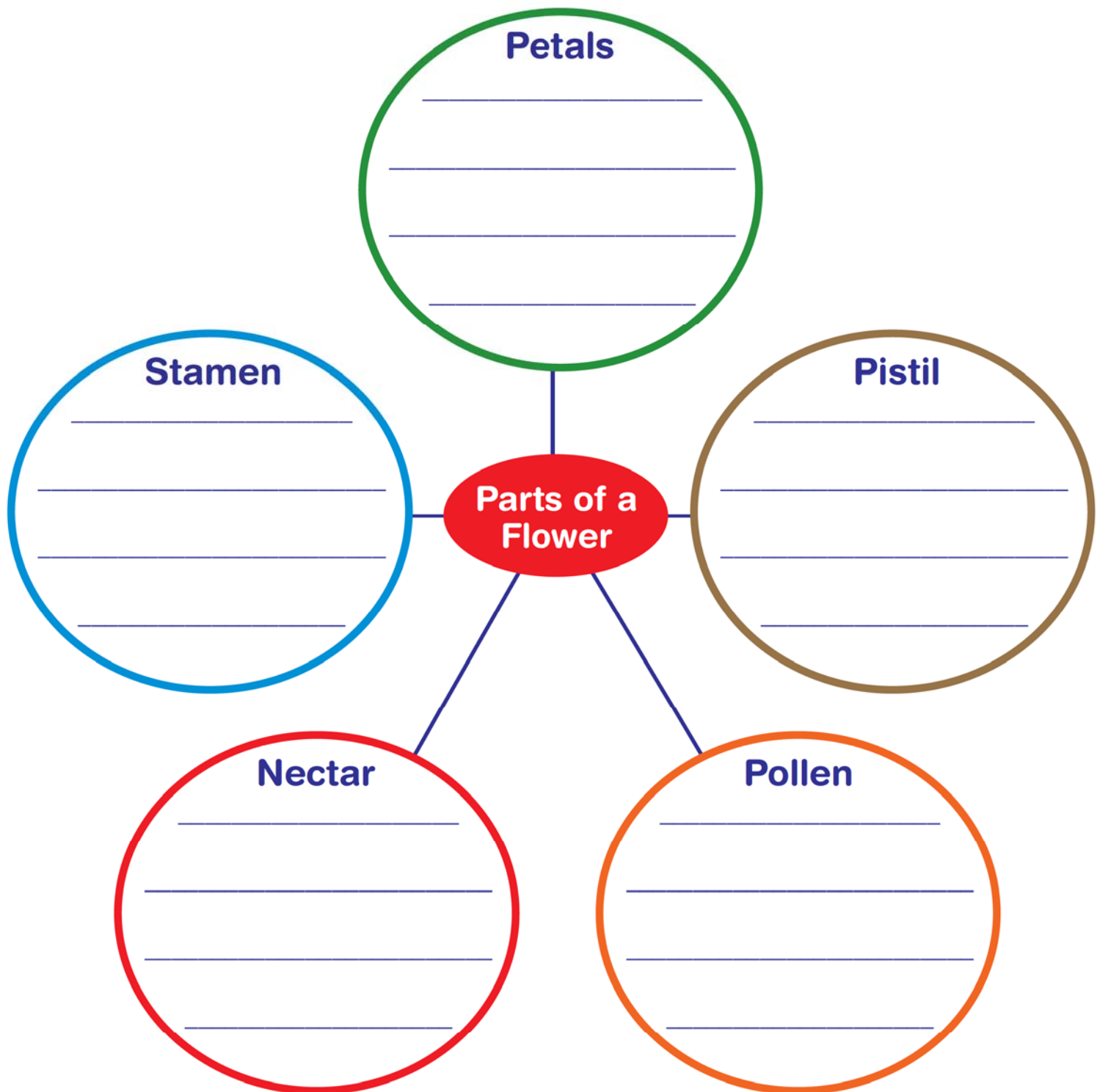
Many plants, but **not** all, produce colorful, sweet-smelling _____ to **attract insects**.

- A flowers
- B leaves
- C stems
- D roots



3. Plant Growth & Reproduction

Describe the different parts and substances found on a **flower** and explain the different roles they each play in the **plant's reproduction**.



3. Plant Growth & Reproduction Quiz

1

What is the **female organ** of a flower?

- A pollen
- B roots
- C pistil
- D stamen



5

_____ is the **sweet liquid** produced by flowers to **attract** insects and birds.

- A Nectar
- B Pollen
- C Sap
- D Water



2

The **male organ** of a flower is called the _____.

- A stamen
- B pistil
- C root
- D stem



6

Bees, butterflies, and insects carry pollen from **flower to flower**. What is this **movement of pollen** from one flower to another called?

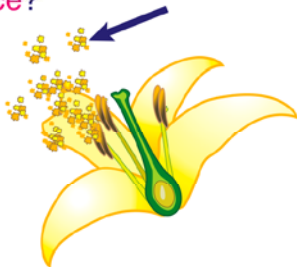
- A pollination
- B germination
- C hibernation
- D photosynthesis



3

What does the **stamen** of a flower **produce**?

- A seeds
- B pollen
- C leaves
- D petals



7

The _____ of a flower contains **egg cells**.

- A petals
- B stamen
- C ovary
- D roots



4

Pollen needs to be **transferred** from one flower's stamen to _____ in order for plant **reproduction** to occur.

- A the stem
- B the pistil
- C the petal
- D the leaf



8

After **fertilization**, a plant produces a seed or seeds that are often **protected** inside a _____.

- A pistil
- B leaf
- C cell
- D fruit

