



# CARAN d'ACHE® Neocolor® II Water-soluble Artists' Crayons

## Monotype Printing



Neocolor® II offers an extensive 126 color range of professional quality highly pigmented water-soluble artists' crayons. The rich brilliant colors have excellent opacity and lightfastness offering unlimited creative possibilities. The AP seal makes them suitable and safe for even the youngest artist.

Combining drawing and printing techniques students will create unique one of a kind monotype prints. An image is drawn on a printing plate. A dampened sheet of paper is placed on top of the plate, hydrating the crayons. The back of the paper is then rubbed to transfer the image from the plate to the paper.

### MATERIALS

- Caran d'Ache® Neocolor® II Crayons  
Choose from sets or open stock, below:  
7500.310 Set of 10 colors  
7500.315 Set of 15 colors  
7500.330 Set of 30 colors  
7500.340 Set of 40 colors  
7500.384 Set of 84 colors  
7500.426 Set of 126 colors  
(All 126 colors are available in open stock)
- Printing Plate:  
Shrinky Dinks® Frosted Ruff N' Ready shrink plastic (machine-roughened on one side) or a nonporous surface. If you choose a nonporous surface such as an acrylic sheet or a plastic dry point plate you will also need -  
Fine or Medium Sandpaper: used to roughen the surface of the printing plate.  
File to bevel the edges of the plastic or acrylic sheets.
- Pencil/crayon sharpener.
- Transfer Tool: wooden spoon, baren, rolling pin or brayer
- Printing Paper:  
Choose from a variety of printing papers, watercolor papers, heavy drawing papers etc.
- Blotter paper or paper towels
- Newsprint or other type of clean scrap paper to use as catcher blanket when printing.
- White Railroad Board for registration template.
- Soaking Tub
- Spray Bottle

### OPTIONAL MATERIALS

- Caran d'Ache® Supracolor® Soft Aquarelle Pencils: Available in 12, 18, 30, 40, 80 and 120 color assortments and in open stock.
- Printing Press
- Drying Rack



Printed on handmade paper



### CROSS-CURRICULAR IDEAS

- Combine art with the study of the life cycle of Monarch butterflies. Create original prints of Monarch butterflies and their caterpillars.
- Gather and collect leaf specimens, discuss the similarities and differences and why they change color in the fall. Use your favorite leaf and make a monotype of it.
- Create prints incorporating images from other cultures such as: Australian Aboriginal, African, Asian, Native American cultures, etc.

### NATIONAL STANDARDS

Content Standard #1: Understanding and applying various media, techniques, and processes.

Content Standard #2: Using knowledge of structures and functions.

Content Standard #6: Making connections between visual arts and other disciplines.

## PREPARATION

- We used Shrinky Dinks® Frosted Ruff N' Ready shrink plastic for our plates. No surface preparation is necessary when using this product because it has one machine-roughened surface.

If using acrylic or plastic dry point plates bevel the edges with a file and sand one side of the plate to roughen. This will allow more color to be applied to the plate for a more intense print. Precut printing plates are readily available in a variety of materials and standard sizes such as 5" x 7", 8" x 10", 9" x 12" and larger.

- Select the paper for your prints (the most common size of printing paper is 22" x 30"). The size plate you select will determine how many prints you will get out of a sheet of paper. Allow a generous margin around the edge of the plate, equal on the top and sides with a wider margin at the bottom, at least an additional 1/2". This extra margin will allow additional room for you to sign your print. (Fig 1)

*Example: If your plate is 4" x 5" with a 1-1/2" margin at the top and on both sides, and a 2" margin at the bottom your paper size will be*

*7" x 8-1/2". You will get 9 prints out of a sheet of 22" x 30" paper. (Fig. 2)*

Cut or tear the printing paper.

Soak your printing paper – sized papers generally require about 20 minutes.

- Registration Template: When printing a number of the same size monotype images it is helpful to make a registration template. This will ensure that you maintain accurate margins from print to print.

Using the white railroad board, cut a piece that will give you a border of at least 2" around the paper you will be printing on. Using the example above, with a paper size of 7" x 8-1/2" you would cut a piece of board that is 11" x 12-1/2".

Center the printing paper on the railroad board. Using a pencil, trace around the printing paper. Near the pencil line write the word PAPER.

Place your printing plate inside the line representing your paper; position it so that you have equal borders on the top, left and right sides with an extra 1/2" at the bottom. Then using a pencil or marker trace a line around the plate. Inside the line you have drawn to represent the plate write the word PLATE.

Cover this template with contact paper or laminating film (use care when applying so there are no wrinkles). This will keep the template clean and dry throughout the printing process. (Fig 3)

Fig 1

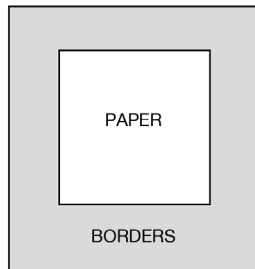


Fig 2

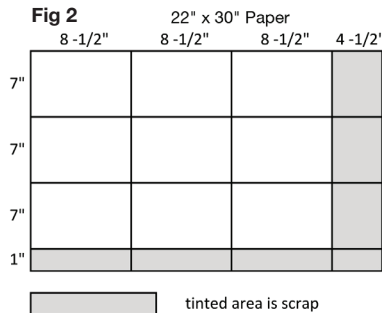
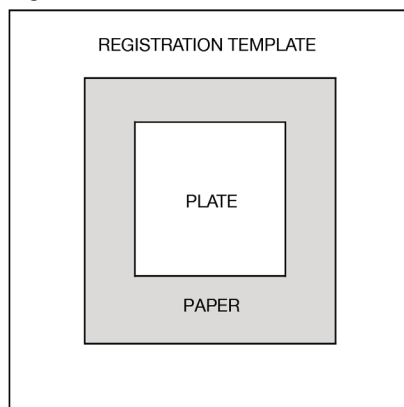


Fig 3



## DIRECTIONS

1. Draw your image directly on the roughened surface of the Shrinky Dinks® shrink plastic or acrylic/plastic plate with the Neocolor II Crayons. Try adding a wash effect - use a brush moistened with water and apply to the crayon on the plate. Allow wash to dry before printing.

2. Position the plate on the registration template.
3. Remove paper from soaking tub and damp dry between blotter paper, paper towels or newsprint.

4. Place damp paper over the plate, lining it up with the outline on the template.

5. Cover with a dry sheet of paper. The dry paper acts as a catcher and as a cushion. (Fig 4)

6. Transfer the image from the plate to the damp paper by rubbing with a spoon or applying pressure with a rolling pin or brayer. You can check to see how the image is transferring by holding one edge down and lifting the opposite end. If the image is too light, apply more pressure in that area or spray lightly with water before applying more pressure.

7. Remove the cover paper, lift the print and allow it to dry. Additional color or detail can be added to the print after it dries.

8. Using a pencil sign, title, and number your print. Your monotype should be numbered as 1/1 (one of one) with the number placed to the left under the image. If the print has a title it is placed in the center under the image. Your signature goes on the far right with the year produced. (Fig 5)

Fig 5

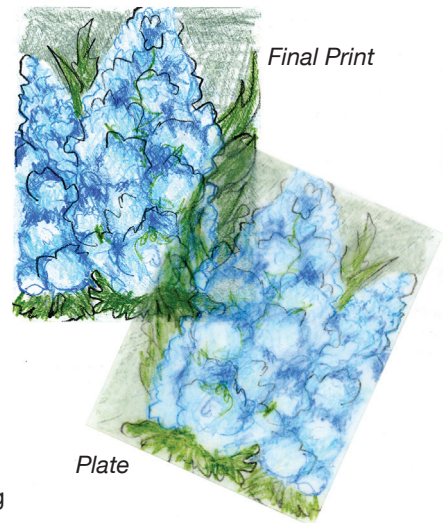
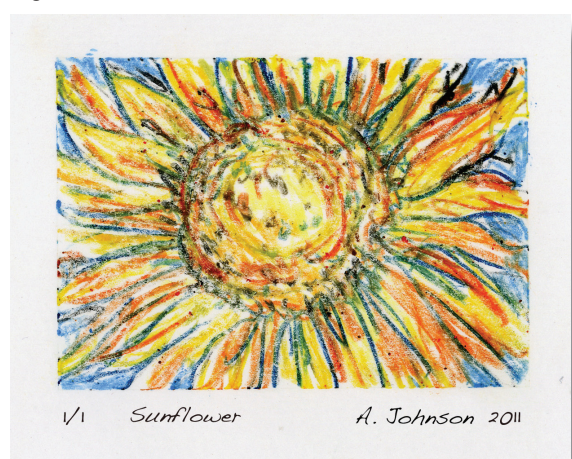


Fig 4

