



FABER-CASTELL  
since 1761

## Display Easel

Add an easel to the back of your art to display for all to see.

- 1.) Fold the easel along the creased lines.
- 2.) Gently punch the rounded area out, fold down and fit it in the slot.
- 3.) Remove the release paper and apply the stand to the center of the back of your art. Be sure the bottom of the stand lines up with the bottom of your art.



# Coloring with CLAY

The fun of smooshing and rolling clay is combined with 4 brilliant design boards to **color** with clay!

## Important Information About the Clay

- Make sure your hands and work surface are clean.
- Wear a smock or old clothes.
- Cover your work surface with a plastic tablecloth or use the **Clay Play Mat**. → The clay may stain fabric, furniture or other surfaces.
- Wipe the Clay Play Mat with a dry paper towel to clean.
- Wash hands with soap and water after playing with the clay.

**Note:** Although the clay is non-drying, store it in a plastic bag when not in use.



Visit us at:

[www.GreatArtStartsHere.com](http://www.GreatArtStartsHere.com)

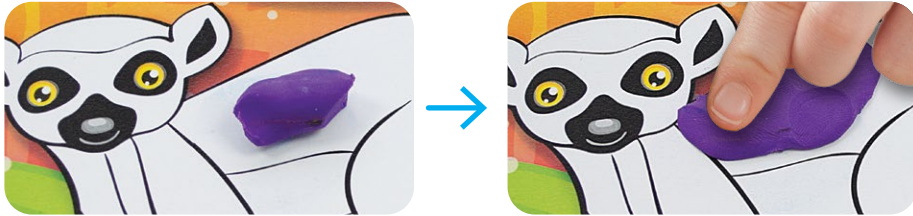


Do Art Coloring with Clay #14329  
© Faber-Castell USA, Inc.  
Cleveland, Ohio 44125

Conforms to ASTM D-4236 • Non-toxic Safe for Children

# Clay Techniques

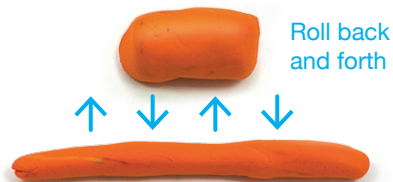
**Pinch & Place** - Color in areas by pinching off small amounts of clay and pressing them into the design.



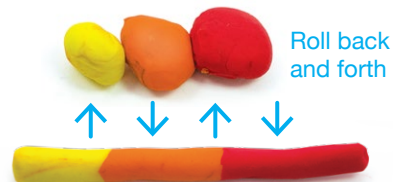
**Clay Balls & Dots** - Roll small pieces of clay in a circular motion. Add a ball to your design and flatten it to make a dot.



**Clay Rod** - Roll a small piece of clay back and forth until you form a thin rod. You may need to use both hands. Add the rods to your design to cover long areas.



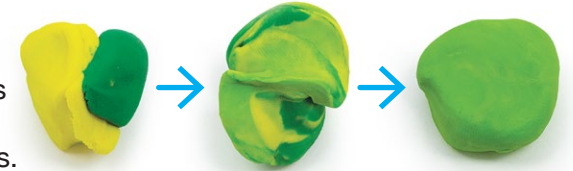
**Rainbow Rod** - Try using different clay colors to create a rod.



**Marble the Clay** - Squish and twist two or more clay colors together. You'll see the colors start to mix into each other. Stop squishing when you're happy with the result.



**Mix New Colors** - Squish two colors together. Keep squishing between your fingers until the colors are completely mixed and a new color appears.



**Layer Clay** - Try layering clay colors for a dimensional look.



**Blend Clay** - Smear two or more clay colors to create a blend. Use your fingers or the clay tools to smooth it out.

## Let's start coloring!

Choose a design to color with clay. Use the clay techniques to fill in the designs. Be sure you press the clay on the design board firmly to keep it in place.

Use the clay tools to:

**Shape**



**Blend**



**Add Texture**

