

**ASSESSMENT GUIDE**  
**CUMULATIVE ASSESSMENT 1****Short Answer Questions**

(Questions 1 to 6: 2 points each)

**I. Count.**

Circle the correct numbers.

**(a)**

1

2

3

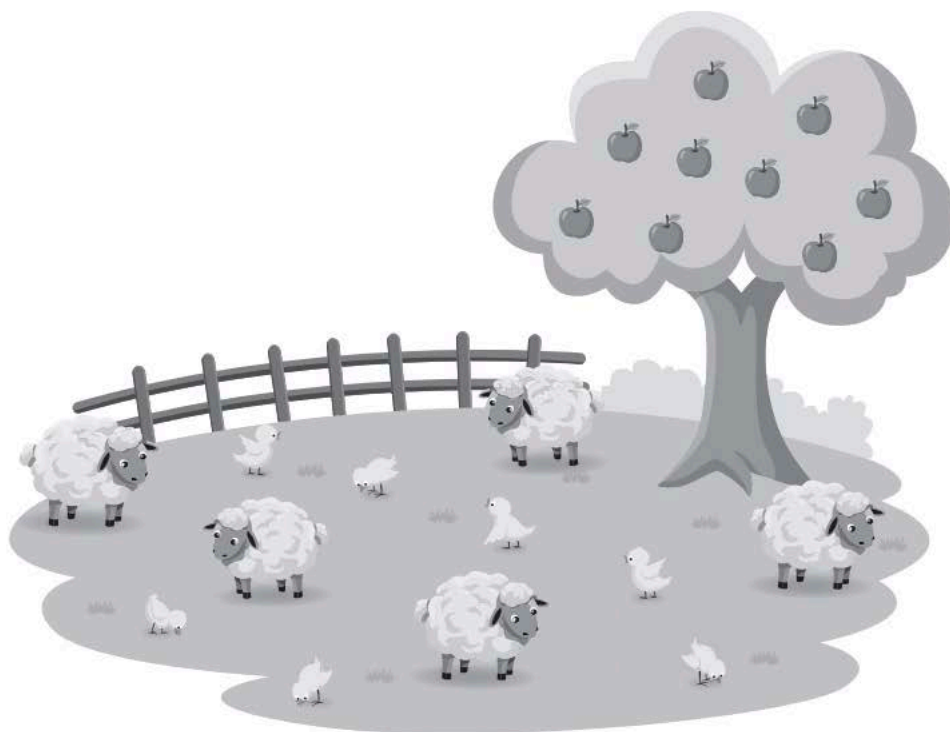
**(b)**

3

4

5

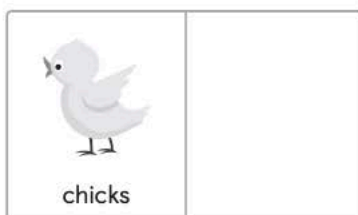
5. Count and write.



(a)



(b)



(c)



(d)





Arrange the towers in order.  
How did you do it?

**Observations:** (Tick all that apply.)

☐

Student could place the towers in this order:  
5, 6, 7.

☐

Student could place the towers in this order:  
7, 6, 5.

☐

Student was unable to put the towers in  
order.

**Student's explanation:**

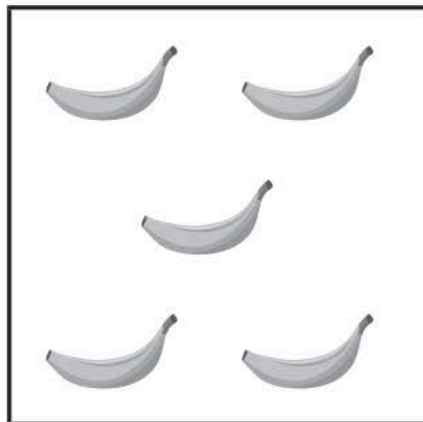
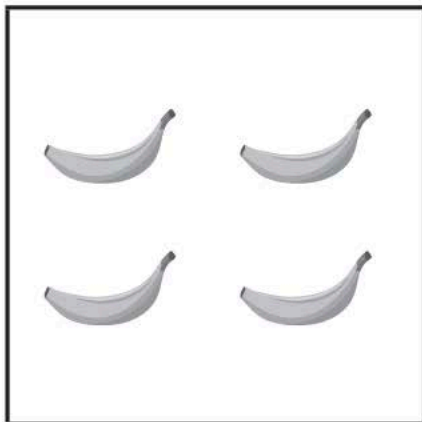
---

---

---

**Teacher's Notes**

(b)

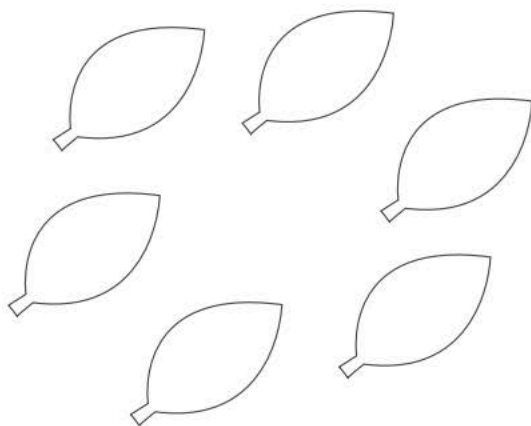


\_\_\_\_\_ and \_\_\_\_\_ make 9.

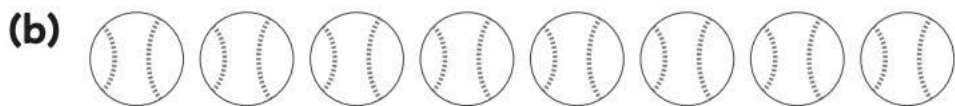
---

2. Use two colors to make two parts.  
Write the numbers.

(a)



6 is \_\_\_\_\_ and \_\_\_\_\_.



8 is \_\_\_\_\_ and \_\_\_\_\_.

---

3. Circle to make 10.  
Count on from 10.  
Write.



10 and 3 make \_\_\_\_\_.

Write "11, \_\_\_\_\_, \_\_\_\_\_, \_\_\_\_\_, \_\_\_\_\_, \_\_\_\_\_,  
\_\_\_\_\_, \_\_\_\_\_, \_\_\_\_\_, 20" on the board.



Write the number, 11, on your paper.

Now, write all the numbers from 11 to 20 in order.  
Then, read the numbers in order.

**Observations:** (Check all that apply.)

☐

Student could write the numbers correctly  
(Circle all that apply.)

12    13    14    15    16    17    18    19

☐

Student could write the numbers in order.

☐

Student could read the numbers correctly.  
(Circle all that apply.)

12    13    14    15    16    17    18    19



Show 17 with the cubes. Now, take this number  
apart to show a group of ten and extra ones.

Complete the sentence: 17 is \_\_\_\_\_ and \_\_\_\_\_.