

GRADE
3

SCIENCE

Graphic Organizers



Table of Contents

Introduction	1
1. Main Parts of Plants - Graphic Organizer/Assessment Quiz	2
2. How do plants grow? - Graphic Organizer/Assessment Quiz	4
3. Grouping of Plants - Graphic Organizer/Assessment Quiz	6
4. Animals - Graphic Organizer/Assessment Quiz.....	8
5. Grouping of Animals - Graphic Organizer/Assessment Quiz.....	10
6. How Animals Grow & Change - Graphic Organizer/Assessment Quiz.....	12
7. Where Plants & Animals Live - Graphic Organizer/Assessment Quiz.....	14
8. Relationships Among Living Things - Graphic Organizer/Assessment Quiz	16
9. Water - Graphic Organizer/Assessment Quiz	18
10. Weather - Graphic Organizer/Assessment Quiz	20
11. Rocks, Minerals & Soil - Graphic Organizer/Assessment Quiz	22
12. Changes on Earth - Graphic Organizer/Assessment Quiz	24
13. Natural Resources - Graphic Organizer/Assessment Quiz.....	26
14. Matter and its Properties - Graphic Organizer/Assessment Quiz.....	28
15. Changes in Matter - Graphic Organizer/Assessment Quiz.....	30
16. Forces & Motion - Graphic Organizer/Assessment Quiz	32
17. Work & Machines -Graphic Organizer/Assessment Quiz	34
18. Energy - Graphic Organizer/Assessment Quiz	36
19. Sound - Graphic Organizer/Assessment Quiz.....	38
20. Earth in Space - Graphic Organizer/Assessment Quiz.....	40
21. The Solar System - Graphic Organizer/Assessment Quiz	42
22. Science in Our World - Graphic Organizer/Assessment Quiz	44
23. Lab Skills & Science Inquiry - Graphic Organizer/Assessment Quiz	46
24. Math in Science - Graphic Organizer/Assessment Quiz	48
25. Did you know? - Graphic Organizer/Assessment Quiz	50
ANSWER KEY	52



Phone: 800-507-0966

Fax: 800-507-0967

www.newpathlearning.com

ISBN 978-1-63212-080-9

NewPath Learning® Products are developed by teachers using research-based principles and are classroom tested. The company's product line consists of an array of proprietary curriculum review games, workbooks, charts, posters, visual learning guides, interactive whiteboard software and other teaching resources. All products are supplemented with web-based activities, assessments and content to provide an engaging means of educating students on key, curriculum-based topics correlated to applicable state and national education standards.

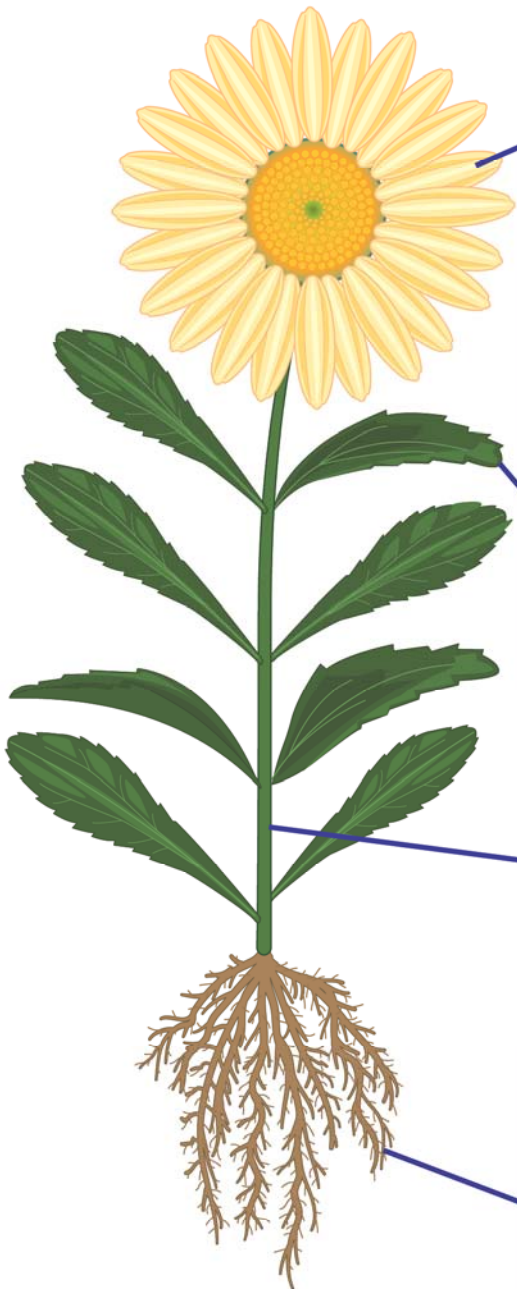
Copyright © MMXIV New Path Learning. All Rights Reserved.

Printed in the United States of America.

1. Main Parts of Plants

There are **four main parts** to a flowering plant. Each part has a different function or job to do.

Name the **four main parts** of a **flowering plant** and write the main **job** or **function** of each.



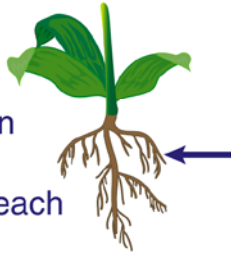
Plant Part	Function

1. Main Parts of Plants Quiz

1

What is an important job or function of a **plant's roots**?

- A to attract insects
- B to keep the plant in the ground
- C to help the plant reach sunlight
- D to make the plant smell nice



5

What do the **leaves of a green plant take in** during the process of photosynthesis, which is needed for a plant to make its own food?

- A nutrients
- B oxygen
- C carbon dioxide
- D water



2

What part of a plant **takes in water from the soil**, which a plant needs to live and grow?

- A the trunk
- B the flower
- C stem of a plant
- D root hairs on a root



6

What do plants release into the air during the process of **photosynthesis**?

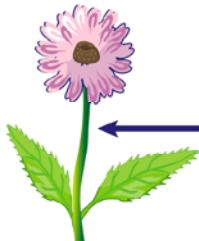
- A oxygen
- B carbon dioxide
- C water
- D helium



3

What part of a plant is used to support and **hold up the plant**?

- A leaves
- B flower
- C stem
- D petals



7

What part of the plant **attracts insects** to the flower?

- A the stem
- B the flower petals
- C the roots
- D the leaves



4

Leaves contain _____, which is the **green substance** that gives green plants their color.

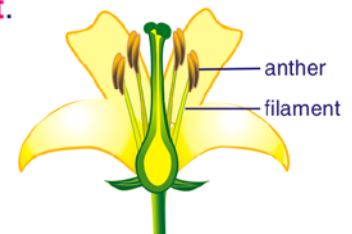
- A nutrients
- B carbon dioxide
- C chlorophyll
- D oxygen



8

The _____ of a flower is made up of two main parts: the **anther** and the **filament**.

- A stamen
- B petals
- C ovary
- D style



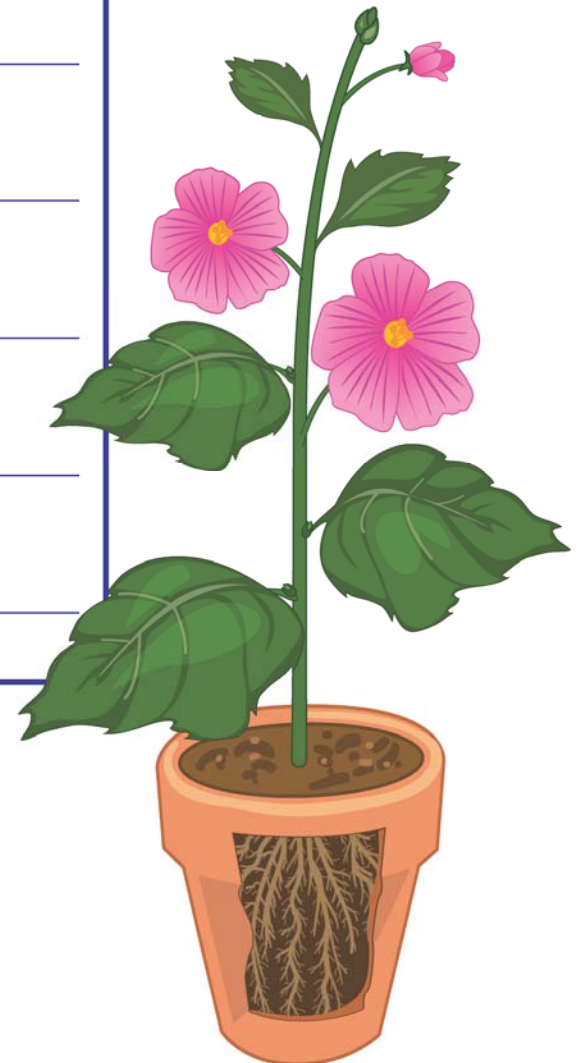
2. How do plants grow?

Plants need many essential things to grow.

List all the things a plant **needs** in order to **grow** and be healthy.

Plant Needs

1. _____
2. _____
3. _____
4. _____
5. _____
6. _____
7. _____
8. _____



2. How do plants grow? Quiz

1

What do plants need in order to **grow**?

- A** just water and sunlight
- B** just water and air
- C** only nutrients, sunlight, and air
- D** water, air, nutrients, warm temperature, sunlight, and space



5

How do **seeds** get from flowers to other places?

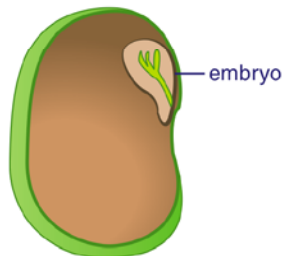
- A** only when animals eat the seeds
- B** only on the wind
- C** by wind, water, animals, and even people
- D** only when people pick the flowers



2

Each **seed** is really a _____, or embryo, in a little package.

- A** nutrient
- B** large flower
- C** stem
- D** tiny plant



6

Plants that do not have flowers, such as ferns, do not make seeds. **What do these types of plants produce instead of seeds?**

- A** pods
- B** roots
- C** spores
- D** nuts



3

A _____ is made up of three parts: the seed coat, cotyledon, and embryo.

- A** flower
- B** seed
- C** root
- D** stem



7

What is the **process** by which the plant **embryo** grows from inside the seed to a seedling above the soil?

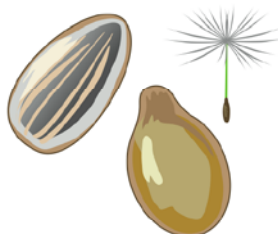
- A** respiration
- B** photosynthesis
- C** breathing
- D** germination



4

Seeds contain _____ which helps the new plant begin to grow.

- A** three leaves
- B** food
- C** a large stem
- D** thick roots



8

A _____ is a **young plant** that is in its early stages of growth.

- A** root
- B** seedling
- C** stem
- D** pod



3. Grouping of Plants

Plants can be **grouped** based on similar features and characteristics.

Find two leaves from two different plants outside and fill out the following graphic organizer:

How are the leaves alike ?	How are the leaves different ?
Shape:	Shape:
Size:	Size:
Leaf edge: (smooth, teeth, lobed)	Leaf edge: (smooth, teeth, lobed)
Leaf arrangement: (alternate, opposite, whorled)	Leaf arrangement: (alternate, opposite, whorled)
Group of leaves: (single or compound)	Group of leaves: (single or compound)
Other:	Other:
Draw the leaf	Draw the leaf

3. Grouping of Plants Quiz

1

Plants are often put into **groups** by the type of _____ that they have.

- A parts
- B color
- C smell
- D flavor



5

Some **flowering plants** only live one year. **Others die during the fall and then in the spring they _____.**

- A die after one day
- B grow smaller than the year before
- C grow again
- D never need watering



2

Plants can also be **grouped** by the type of _____ they have.

- A weight
- B color
- C flowers
- D smell



6

Coniferous trees are trees that _____.

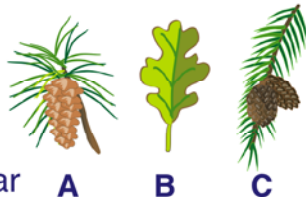
- A do not lose their leaves in the fall
- B lose their leaves in the fall
- C die in the fall
- D grow new limbs every three years



3

Plants and trees can be grouped by the type of leaves they have. **Which two trees have similar leaves?**

- A trees A and B
- B trees A and C
- C trees B and C
- D none are similar



7

What do **flowering plants and trees** do that **coniferous trees** do not do?

- A They produce flowers.
- B They grow.
- C They need water.
- D They die after a year.



4

By looking at these pictures, we can see that trees and plants can also be **grouped** by the kind of _____ they have.

- A color
- B roots
- C height
- D smell



8

One kind of cone that grows on coniferous trees is a _____.

- A white cone
- B cone with nuts
- C black cone
- D large seed cone

