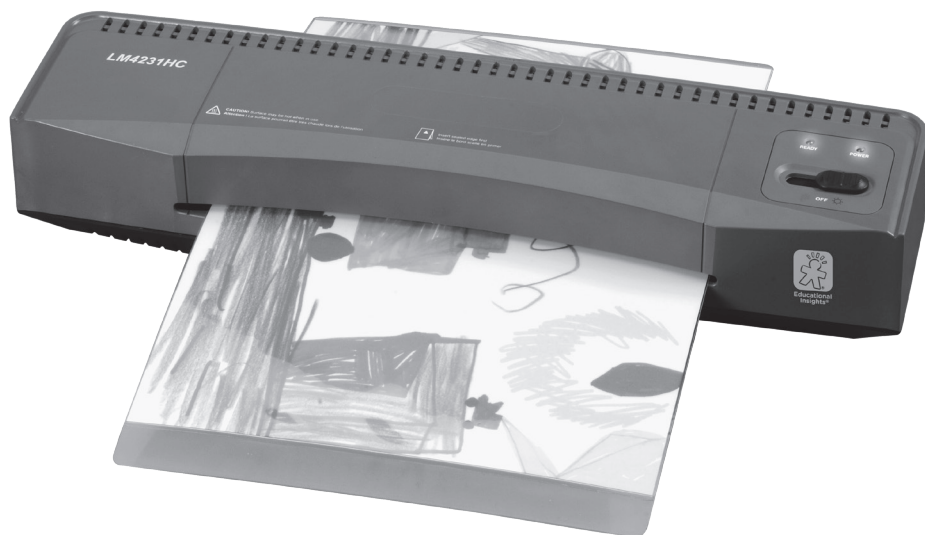


Classroom Laminator

A personal laminator—just for the classroom!

Dual-Mode Laminator with Hot and Cold Settings



IMPORTANT SAFETY INSTRUCTIONS

Read all safety instructions closely before using this unit.
Retain these instructions for future reference.

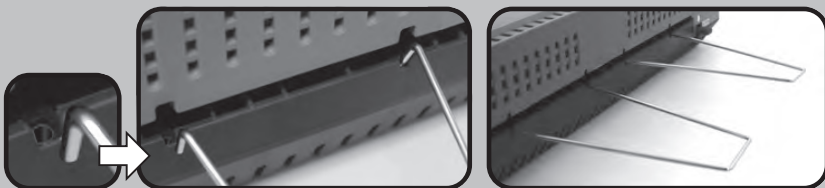
Installation
Operation
Care and Cleaning / Storage
Warning / Safety Instructions
Troubleshooting

Maximum feeding width of 9" (23 cm)
Laminates up to a maximum thickness of 0.02" (0.5 mm)
Accepts pouches up to a max. thickness of 3-4 mil (80-100 microns)
Voltage: 120v-60Hz / 2.8A

INSTALLATION

To reduce the risk of electric shock, if the machine has a polarized ETL-approved plug (one blade is wider than the other), this plug will fit in a polarized outlet only one way. If the plug does not fit fully in the outlet, reverse the plug. If it still does not fit, contact a qualified electrician to install the proper outlet. Please do not change the plug in any way. If the supply cord is damaged, it must be replaced by the manufacturer, its service agent, or similarly qualified person in order to avoid a hazard.

As pictured, attach the cooling holders to the dedicated slots located in the back section of the laminator. There are 4 slots, 2 for each holder. Each holder will hook onto the lower part of the outlet on both the left and right sides.



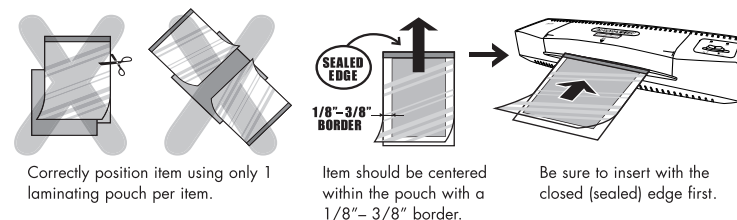
OPERATION

This machine can be used with cold or warm laminating films. The items being laminated can be pictures, cards, documents, paper, etc., but must be no thicker than 0.02" (0.5mm).

NO CARRIER SHEET REQUIRED. Only use pouches intended for laminators. Make sure item in laminating pouch is evenly inserted. **For smaller items**, do not use too large a pouch because this may cause poor laminating quality and create jams. Do not laminate wet items. Laminating damp/moist documents will result in poor laminate quality.

To avoid creasing, DO NOT insert the item with the open side of the laminating pouch first. Be sure to follow the guidelines on the feed guider to properly insert the item into the entry. Be sure to insert with the closed (sealed) edge of the laminating pouch first.

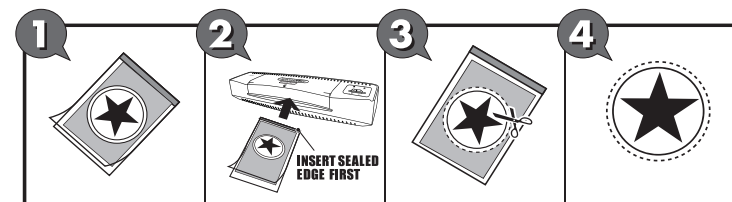
OPERATION



Correctly position item using only 1 laminating pouch per item.

Item should be centered within the pouch with a 1/8"-3/8" border.

Be sure to insert with the closed (sealed) edge first.



For smaller or irregularly shaped items, position item in center of adequately sized pouch and trim after lamination. **DO NOT CUT LAMINATING POUCH TO FIT ITEM BEFORE LAMINATION.**

☀ HOT LAMINATING

1. Insert the power plug into an electrical socket.
2. Push the control switch to "HOT ☀". The motor will start up and the red "POWER" indicator light will turn on.
3. Wait 5-10 minutes for the machine to warm up. The green "READY" indicator will light up when the proper laminating temperature is reached.
4. Put the item being laminated into a laminating film, leaving a 1/8"-3/8" border from the sealed end of the pouch.
5. Insert them together into the feed entry at the front of the laminator.
Be sure to insert with the closed (sealed) edge of the laminating pouch first.
6. The finished, laminated item will roll out through the exit slot on the back of the laminator.
7. Push control switch back to "OFF" to power off the laminator after use.

❄ COLD LAMINATING

When switching over to the Cold lamination mode immediately after Hot laminating, please wait at least 60 minutes for the laminator to cool down before use. If laminator is too hot for Cold lamination, item being laminated could be damaged.

1. Insert the power plug into an electrical socket.
2. Push the control switch to "COLD ❄". The motor will start up and the red "POWER" indicator light will turn on.
3. Put the item being laminated into a laminating film, leaving a 1/8"-3/8" border from the sealed end of the pouch.
4. Insert them together into the feed entry at the front of the laminator.
Be sure to insert with the closed (sealed) edge of the laminating pouch first.
5. The finished, laminated item will roll out through the exit slot on the back of the laminator.
6. Push control switch back to "OFF" to power off the laminator after use.

OPERATION

When Finished Laminating:

Caution: When the laminated item exits, it may be very hot and soft. Handle the laminated item with care.
Pressing the item with a book or other heavy object may help make it flat and smooth.

JAM RELEASE LEVER (CLEAR JAMMED ITEMS)

This laminator features a Jam Release lever to easily clear items stuck in the machine. Follow these steps:

- Turn off laminator and unplug from power outlet.
- Make sure laminator is on a stable flat surface.
- Firmly press the RED Jam Release lever all the way down and hold.
- With the other hand, pull to remove the jammed item from either the front or back opening.
- Release the Jam Release lever.
- When cleared, plug the power cord back into the outlet. Turn on and resume use.
- If laminator repeatedly jams, please contact customer service.



CARE AND CLEANING / STORAGE

Always unplug the laminator from the electrical outlet and allow it to cool before cleaning. Do not use any abrasive cleansers. With a clean damp cloth, simply use warm soapy water to wipe the exterior. Dry thoroughly before storing or continued use. Never immerse the laminator in any form of liquid or hold under running water.

DO NOT SPRAY OR KEEP ANY AEROSOL PRODUCTS IN OR AROUND THE LAMINATOR. DO NOT USE CANNED AIR. Never use anything flammable to clean the machine. This may result in serious injury or damage to the product.

DO NOT use any sharp or pointed articles for cleaning the inside, as this will damage the laminator. Because deposits or residue will influence the laminating results, periodically clean the rollers after use. While "ON," insert a folded letter-sized paper into the entrance of the laminator. The paper will roll out with any present residue. Repeat several times to completely clean the rollers. If the item being laminated is jammed, turn off and unplug the machine and refer to "JAM RELEASE LEVER" in the Operation portion of this user manual.

STORAGE

Always unplug the laminator from its outlet when not in use. Allow the laminator to completely cool before storing. Store the laminator in a dry area. Never wrap the cord around the laminator because this will contribute to wear on the cord. Do not place heavy items on top of the laminator, which may result in possible damage.

⚠ WARNING / SAFETY INSTRUCTIONS



Caution! Surface may be hot when in use.



Insert sealed edge first.



Always unplug the unit when not in use to prevent accidents.



Do not operate the unit with a damaged power supply cord.

Your safety as well as the safety of others is important. In this manual as well as on the product are important safety instructions. Please read and retain these instructions. Failure to follow instructions may result in electric shock, fire, or serious personal injury. The warnings, cautions, and instructions discussed in this instruction manual cannot cover all possible conditions and situations that may occur. It must be understood by the operator that common sense and caution are factors that cannot be built into this product, but must be supplied by the operator.

Although your appliance is easy to operate, for your safety, the below warnings must be followed:

- **DO NOT SPRAY OR KEEP ANY AEROSOL PRODUCTS IN OR AROUND THE LAMINATOR. DO NOT USE CANNED AIR.** Never use anything flammable to clean the machine. This may result in serious injury or damage to the product.
- Be sure the ON/OFF switch is set to the "OFF" position before plugging in the machine.
- Only use pouches intended for laminator use. Pouches that are too thin will be easily caught and result in jams.
- Do not insert anything into the machine other than laminating films and suggested items.
- Never put any metal object or your fingers into the unit's paper inlet. If an item gets jammed, switch power off and unplug from outlet immediately. Once cooled, remove jam from laminator with the use of the release lever located on the back of the machine.
- Never laminate any heat-sensitive materials (e.g., thermal fax paper) or wet/damp items.
- Never disassemble, repair, or redesign the machine on your own.
- Do not operate unit after any malfunction or damage.
- Whenever smoke or any abnormal smell is detected, immediately unplug the unit and contact customer service at Educational Insights.
- Do not unplug the socket by pulling on the power supply cord.
- Never leave the unit unattended while connected to an electrical outlet.
- The unit must be unplugged: a) Before any cleaning or maintenance, b) After operation, and c) If unit appears to be faulty.
- Extension cords are not recommended.
- To avoid electrical shock, do not immerse unit, power cord, or plug in water or any other liquid.
- Do not touch the machine with wet or damp hands.
- Do not place the unit near any heat source.
- Do not cover the unit while it is in use. Never put your hand over any vents when the unit is in operation. Serious injury may occur.
- Close supervision is necessary when unit is used near children.
- The plastic bag in which the product was packaged should be kept out of reach of children because it poses a suffocation hazard.
- Do not use unit for any purpose other than its intended use.

TROUBLESHOOTING

If there is a problem with your unit, check below for the symptoms and steps to resolve it. If you continue to have problems, contact customer support. **DO NOT ATTEMPT TO REPAIR BY OPENING THE LAMINATOR.**

No power. Indicators do not turn on and laminator does not work.

Check the power plug and see if it is correctly plugged into the wall socket.

Laminator is jammed:

Only use pouches intended for laminators. Make sure item in pouch is evenly inserted. For smaller items, do not use too large a pouch because this may cause poor laminating quality and create jams. Clear jams by using the release lever:

- Turn off laminator and unplug from power outlet.
- Make sure laminator is on a stable flat surface.
- Firmly press the RED Jam Release lever all the way down and hold.
- With the other hand, pull to remove jammed item from either the front or back opening.
- Release the Jam Release lever.
- When cleared, plug the power cord back into the outlet. Turn on and resume use.

Avoid jams:

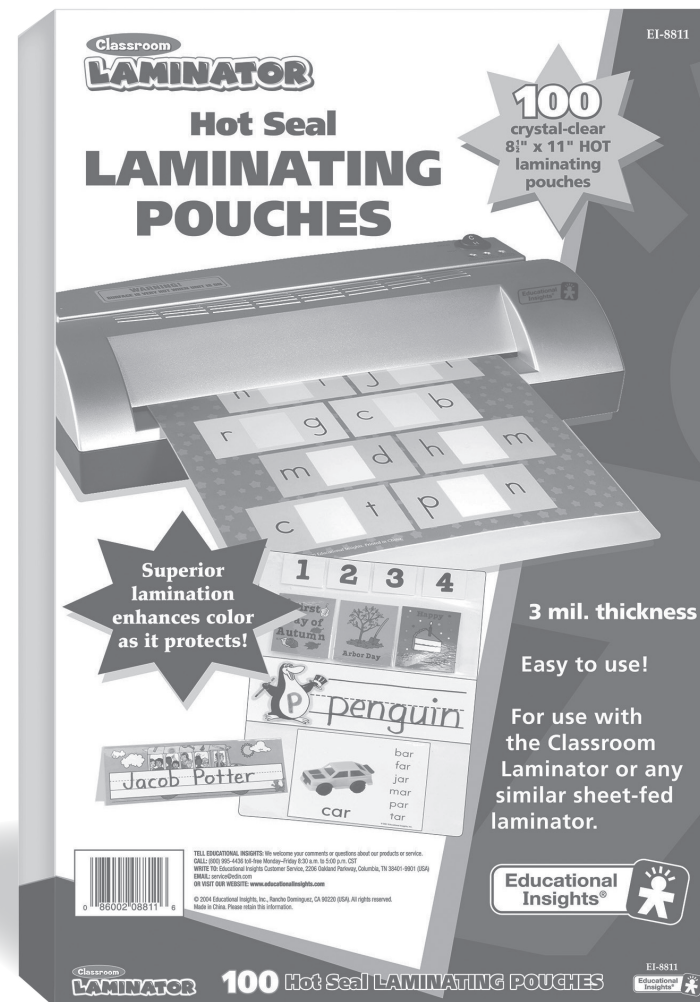
- Only use pouches intended for laminators.
- Be sure to insert with the closed (sealed) edge of the laminating pouch first.
- Make sure item in laminating pouch is evenly inserted.
- **For smaller or irregularly shaped items**, do not use too large a pouch because this may cause poor laminating quality and create jams. Position in center of adequately sized pouch and trim after lamination. **DO NOT CUT LAMINATING POUCH TO FIT ITEM BEFORE LAMINATION.**
- Do not laminate wet items. Laminating damp/moist documents will result in poor laminate quality.

Lamination is cloudy and/or bubbled:

Run the laminated item through the laminator again. The laminator requires a 5-8 minute preheating time.

Also available from Educational Insights:

EI-8811 CLASSROOM LAMINATOR Hot Seal Laminating Pouches





© Educational Insights. Gardena, CA (U.S.A.). All rights reserved.
Learning Resources Ltd., Bergen Way, King's Lynn, Norfolk,
PE30 2JG, UK. Please retain this information. Made in China.
www.educationalinsights.com

