

TABLE OF CONTENTS

Book 1

Table of Contents Book 2

See page 42

Table of Contents Book 3

See page 82

UNIT 1

Lesson 1: The Staff, Notes and Pitches	3
Lesson 2: Treble Clef and Staff	4
Lesson 3: Bass Clef and Staff	5
Lesson 4: The Grand Staff and Ledger Lines (the middle notes).	6
Lesson 5: Ledger Lines (low and high notes)	7
Ear Training for Lessons 1–5	8
Review of Lessons 1–5.	9

UNIT 2

Lesson 6: Note Values	10
Lesson 7: Measure, Bar Line and Double Bar	11
Lesson 8: $\frac{4}{4}$ Time Signature and Note Values.	12
Lesson 9: Whole, Half and Quarter Rests	13
Ear Training for Lessons 6–9	14
Review of Lessons 6–9.	15

UNIT 3

Lesson 10: $\frac{2}{4}$ Time Signature	16
Lesson 11: $\frac{3}{4}$ Time Signature	17
Lesson 12: Dotted Half Note	18
Lesson 13: Ties and Slurs	19
Ear Training for Lessons 10–13	20
Review of Lessons 10–13	21

UNIT 4

Lesson 14: Repeat Sign, 1st and 2nd Endings	22
Lesson 15: Eighth Notes	23
Lesson 16: Eighth Rests	24
Lesson 17: Dotted Quarter Note	25
Ear Training for Lessons 14–17	26
Review of Lessons 14–17	27

UNIT 5

Lesson 18: Dynamic Signs	28
Lesson 19: Tempo Marks	29
Lesson 20: Articulation	30
Lesson 21: D.C., D.S., Coda and Fine	31
Ear Training for Lessons 18–21	32
Review of Lessons 18–21	33

UNIT 6

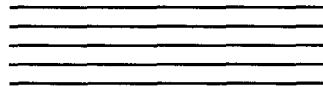
Lesson 22: Flats	34
Lesson 23: Sharps.	35
Lesson 24: Naturals	36
Lesson 25: Whole Steps, Half Steps and Enharmonic Notes	37
Ear Training for Lessons 22–25	38
Review of Lessons 22–25	39

APPENDIX

Glossary & Index of Terms & Symbols	40
---	----

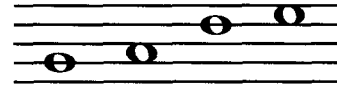
The Staff, Notes and Pitches

Music is written on a STAFF of five lines and the four spaces between.

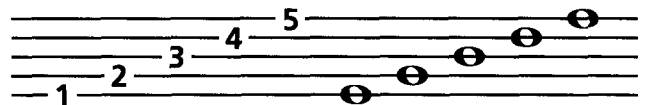


The STAFF

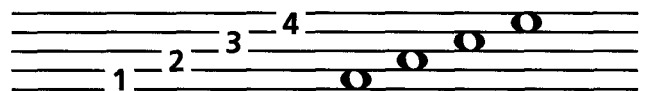
Music NOTES are oval-shaped symbols that are placed *on* the lines and *in* the spaces. They represent musical sounds, called PITCHES.



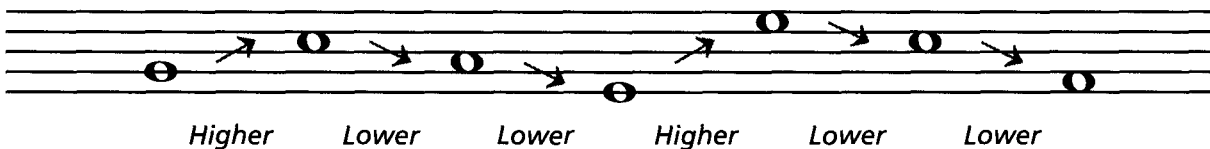
The lines of the staff are numbered from bottom to top.



The spaces between the lines are also numbered from bottom to top.

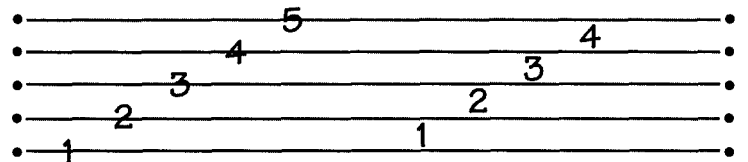


If the notes appear *higher* on the staff, they sound *higher* in pitch.
If the notes appear *lower* on the staff, they sound *lower* in pitch.

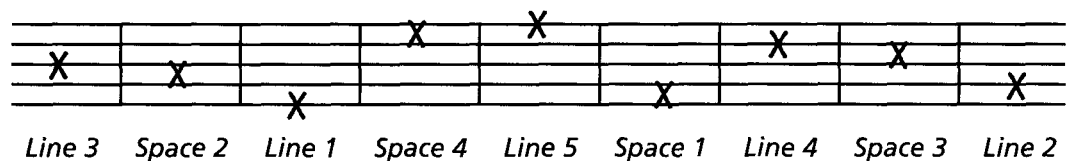


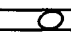
Exercises

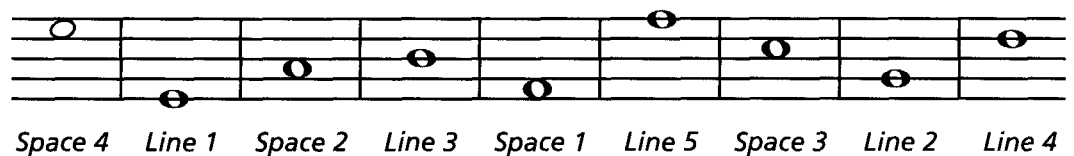
- * 1** Draw a staff by connecting the dots. Use a ruler or straight edge. Number the lines, then the spaces from low to high.



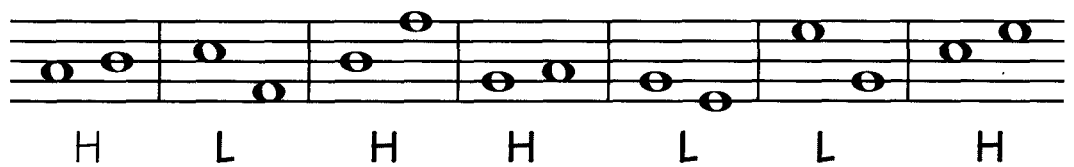
- 2** On the staff, mark an X in the following locations:



- 3** Write notes like this  on the following lines and spaces:



- 4** Indicate whether the 2nd note is higher or lower than the 1st note by using an H (higher) or L (lower).



*Correct answers are indicated in grey.